



175 Toveys Road, CHILTERN, VIC 3683

Estate of the late Daryl John Skau 3 Individual lots with a total of 242*Ha - 598*Acres

To be offered individually as follows.

"BOTTOM" 80.84*Ha - 199.8*Acres

Well fenced, power, shade trees for stock, numerous house sites, excellent water, 3 dams, 4 paddocks.

"HOME" 80.39*Ha - 198.7*Acres

Large brick 3 or 4 bedroom home, lounge, kitchen, all round verandah plus double carport. Steel stock yards with crush, all in excellent condition. 80 x 40 enclosed shed with power, hay shed,. Excellent water, 5 dams, shade trees, 3 paddocks, well fenced.

"GILLMANS" 80.80*Ha - 199.7*Acres

Well fenced, power, derelict home and dairy, shade trees, for stock, numerous house sites, excellent water with spring fed dams, 7 paddocks.

TYPE: Auction

INTERNET ID: 300P192008

AUCTION DETAILS

10:00am, Friday March
27th, 2026

CONTACT DETAILS

Albury rural
297 Schubach Street
Albury, NSW
02 6021 3355

Reg Coulston
0418 118 207

Comments:- Solid Granite country with carrying capacity of each lot (35-40 breeding cows).

Ideally suited to grazing or lifestyle with close proximity to Hume Freeway/Chiltern kms. 40kms to Albury/Wodonga.

Being offered at Auction with 10% deposit, balance 30 days.

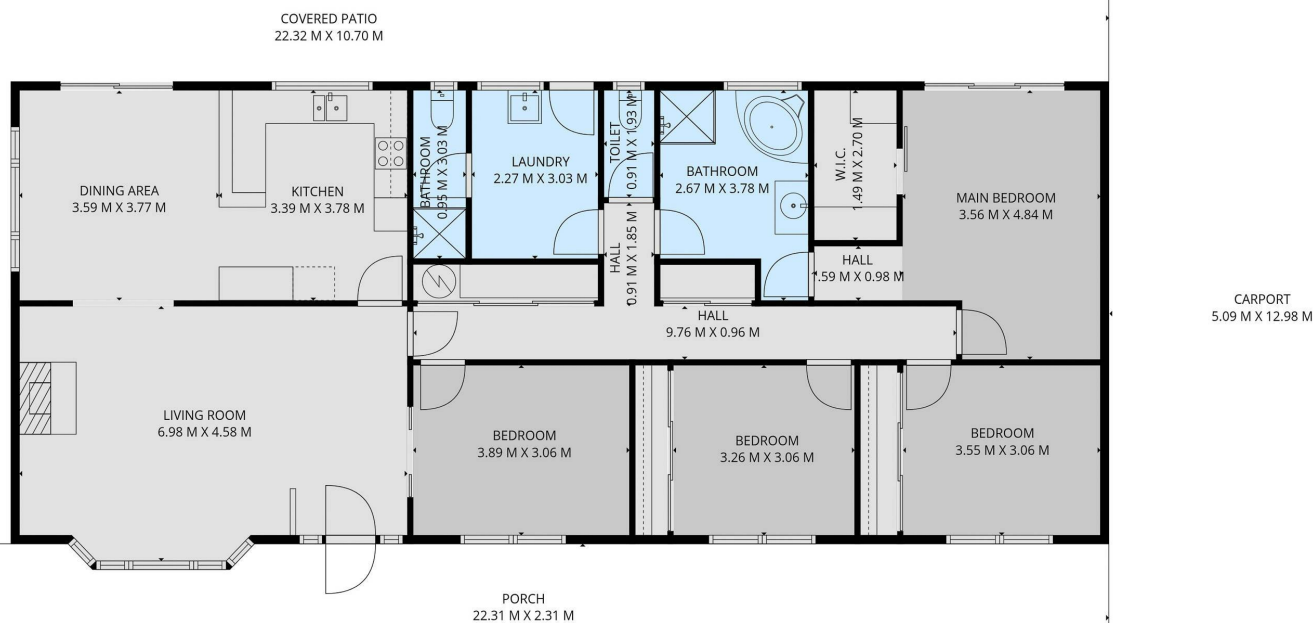
Clearing Sale to follow property Auction.











TOTAL: 157 m2

1st floor: 157 m2

EXCLUDED AREAS: PORCH: 50 m2, COVERED PATIO: 75 m2, CARPORT: 66 m2,
WALLS: 8 m2

SIZES AND DIMENSIONS ARE APPROXIMATE, ACTUAL MAY VARY