

16 Flinders Grove, ISLAND BEACH, SA 5222

ABSOLUTE BEACH FRONTAGE, A VERY RARE INVESTMENT OPPORTUNITY!

For sale on an EOI basis, COB Thursday 12th March

Open for inspection

Friday 20th Feb 12 noon -12.45pm

Sunday 22nd Feb 12 noon -12.45pm

- 5 bedroom, 2 bathroom, well established home in exclusive cul de sac.
- Massive open space living area/kitchen leading to the deck overlooking the beach and Eastern Cove.
- Imported Italian sandstone open fireplace, caeser-stone kitchen benchtops
- Northerly aspect, capturing the winter warmth
- 180 degree views from the deck
- Mains power and water, supplemented by solar panels, and 70,000 litres rain water

The particulars contained herein are supplied for information only and shall not be taken as a representation in any respect on the part of the vendor or its agent. Interested parties should contact the nominated person or office for full and current details.

TYPE: For Sale

INTERNET ID: 300P192030

SALE DETAILS

**Expressions Of Interest
COB Thursday 12th
March**

CONTACT DETAILS

**Elders Real Estate
Kangaroo Island**
12 Telegraph Road
KINGSCOTE, SA
08 8551 4108
RLA: 62833

Colin Hopkins
0408 393 991

storage.

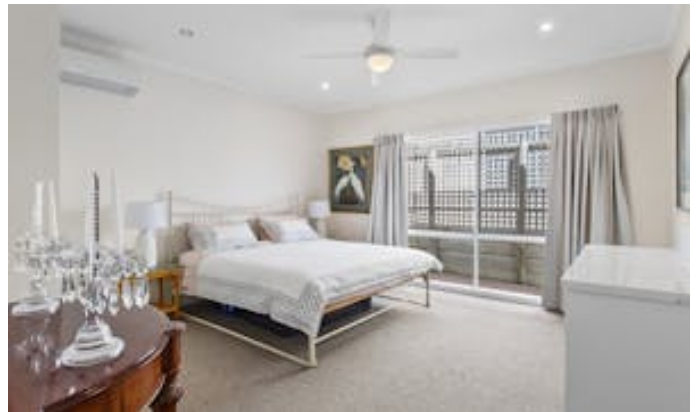
- 1500 sq metre allotment, 30 metre frontage
- Fully paved main driveway, rear courtyard.
- Outside shower, (hot and cold)
- 9 x 8metre colourbond shed, powered, concrete floor, sliding door access, 3.4m high, located on separate driveway, 400 metres from the beach launch access
- Being offered largely walk in, walk out
- Fully compliant deepwater mooring out in front on the blue line

Disclaimer: We have in preparing this information used our best endeavours to ensure that the information contained herein is true and accurate but accept no responsibility and disclaim all liability in respect of any errors, omissions, inaccuracies, or misstatements that may occur. Prospective purchasers should make their own enquiries to verify the information contained herein. Elders Real Estate RLA62833

Other features: Beach Front, Water Front

- Bedrooms: 5
- Bathrooms: 2



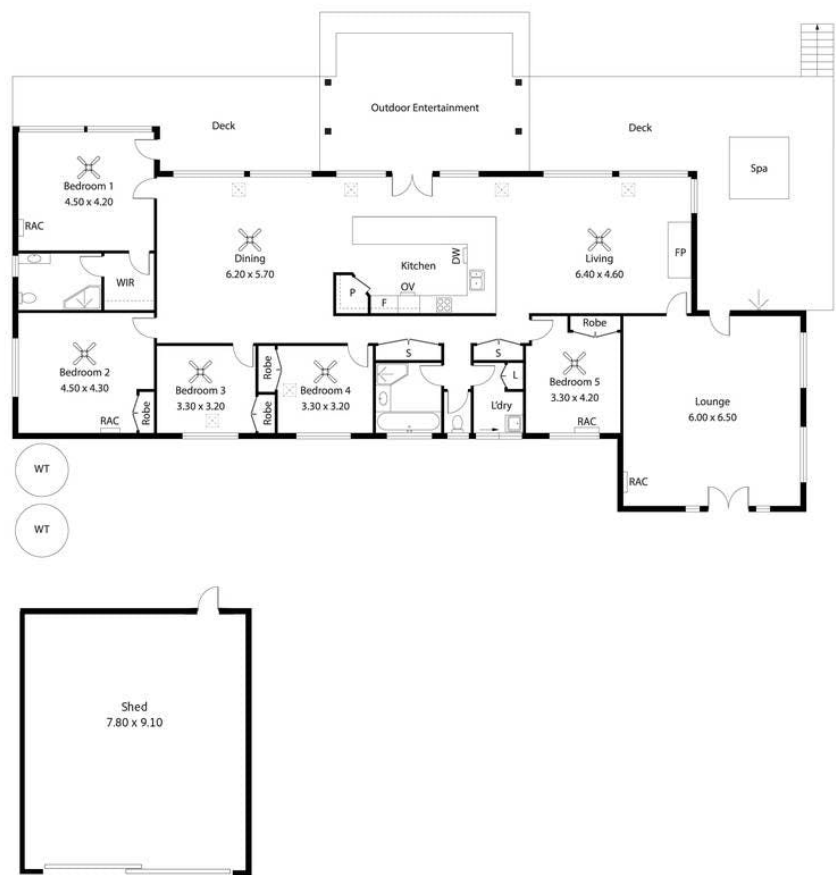






16 Flinders Grove,
ISLAND BEACH

Living:	262.73sqm
Deck:	98.00sqm
Entertainment:	37.80sqm
Shed:	70.98sqm
Total:	469.51sqm



This Drawing is for illustration purposes only.
Not To Scale. All measurements are internal and approximate.
Details intended to be relied upon should be independently verified.
Produced by Open2view.com