

24 Payne Street, WILSONTON, QLD 4350

RENOVATOR IN A CONVENIENT LOCATION - PERFECT STARTER

An excellent opportunity for first home buyers or savvy investors wishing to enter the market with this solid, character-filled timber home in a highly convenient location. Needing painting but offering great bones, this is a smart buy with immediate upside.

Some of the Properties Features include:

- * Two spacious bedrooms
- * High ceilings throughout
- * Classic VJ walls
- * Pressed metal ceilings in the kitchen
- * Large lounge room

TYPE: For Sale

INTERNET ID: 300P192177

SALE DETAILS

Overs Over \$659,000

CONTACT DETAILS

**Elders Real Estate
Toowoomba**
202 Hume Street
Toowoomba, QLD
07 4633 6500

Sue Edwards
0437 377 988

* Light-filled sunroom on entry

* Original timber floorboards

* Solid timber construction

* Fully fenced block

Location Highlights:

* Walk to Wyalla Plaza

* Close to schools and parks

* Easy access to shopping

* Close to public transport

* Ideal, central position for everyday convenience

Why You'll Love It:

* Perfect first home buyer opportunity

* Affordable entry into the market

* Add value with fresh paint and updates

* Character home with long-term potential

* Vacant - Move in, improve, and build equity over time

Bring the paintbrush and reap the rewards of this great character cottage.

Toowoomba Land Rates - Currently -\$1252.71 1/2 year

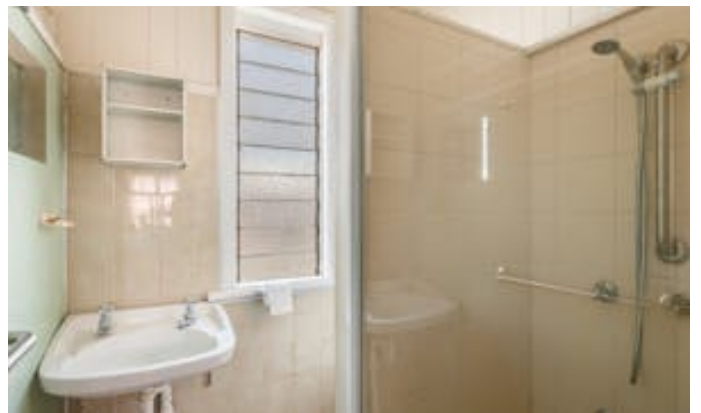
Toowoomba Water Rates - Currently \$397.27 plus consumption - 1/2 year

Contact Sue Edwards at Elders Real Estate on 0437 377 988 to arrange your inspection today.

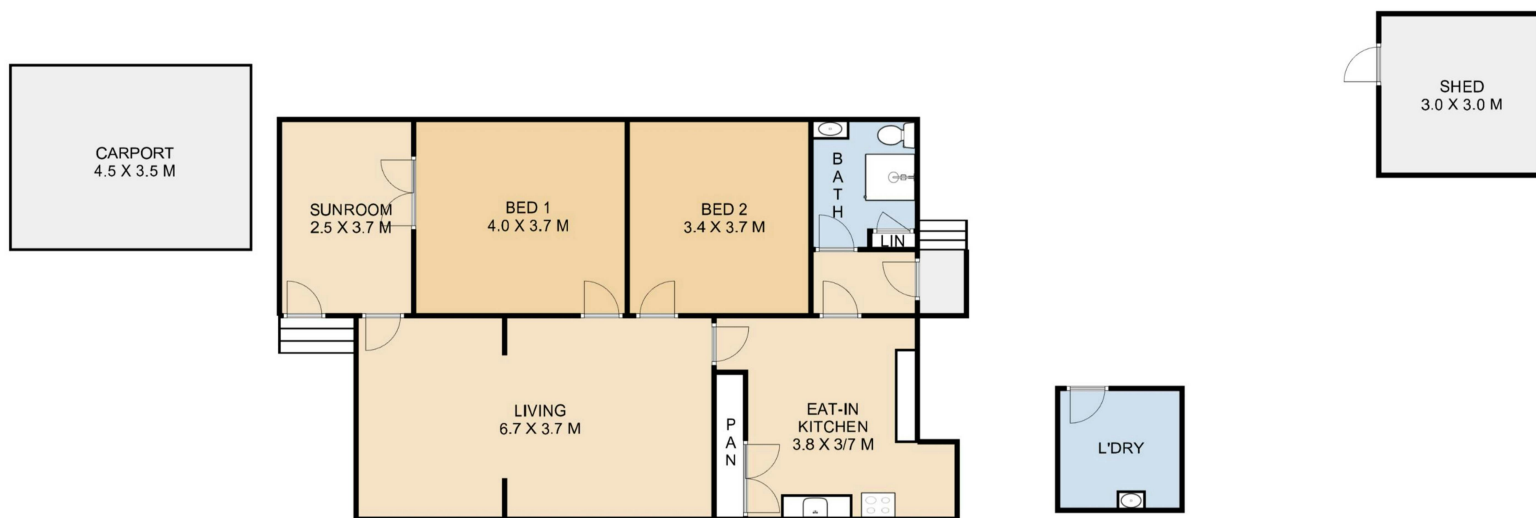
Other features: Close to Schools, Close to Shops, Close to Transport

- Land Area 538.00 square metres
- Bedrooms: 2
- Bathrooms: 1
- Single carport
- Floorboards

The particulars contained herein are supplied for information only and shall not be taken as a representation in any respect on the part of the vendor or its agent. Interested parties should contact the nominated person or office for full and current details.







Elders 24 Payne Street, Wilsonton

This plan is for representational purposes only. All dimensions displayed are approximate and shouldn't be solely relied upon.
Do not edit, reproduce, copy, modify, crop or in any way exploit copyright to Statik Illusions. More info : statikillusions.com/usage-rights/

Internal **99m²** External **24m²** Total **123m²** 