



## 62 Page Drive, BLANCHETOWN, SA 5357

### Executive River Front Home

Rare in the current market are quality holiday homes such as this.

On best offer is this Selecta Homes 2023 built elevated riverfront holiday home. The property features four good size bedrooms, all with built in robes, Daikin reverse cycle air conditioning to all living rooms, roller blinds to living and bedrooms.

The spacious open plan living area (6.8 metres x 3.7 metres) features lounge, specular solid teak table within dining area, with a well-appointed chef's kitchen with quality appliances, including: induction cook top; under bench oven; rangehood and dishwasher, also Led lighting.

The living area opens onto the 12.5 metre x 3 metre balcony providing the perfect place to enjoy the weekend barbecue with friends and family complete with a balcony bar refrigerator and 10 seat outdoor table and chairs. There also two-way lighting to the underside.

Other features are the 9 m x 6 m double and 2.4 high boat garage (for speeds boat tower clearance), with steel mesh reinforced concrete floor, compliant power and Led lighting. which provides secure storage for the ski boat and ski gear, (being negotiable).

The particulars contained herein are supplied for information only and shall not be taken as a representation in any respect on the part of the vendor or its agent. Interested parties should contact the nominated person or office for full and current details.

**TYPE:** For Sale

**INTERNET ID:** 300P192344

#### SALE DETAILS

**E.O.I - Closing**  
**10/3/2026 at 3:30pm**

#### CONTACT DETAILS

**Elders Riverland**  
2 East Terrace  
LOXTON, SA  
8588 6066  
RLA: 62833

**Wayne Kleemann**  
0417 000 988

The riverbank is terraced with steps providing access to the quality engineered aluminium gangway and pontoon (being negotiable).

Two high quality "DAP" river water pumps, one for garden and the other for the house with the river water being cleaned via an adjacent DAP pumps sand filter.

The property is high set, 5 metres above the river water, fenced with the house remaining unaffected by the 2022 flood unlike adjacent river level holiday homes. The property is being offered For Sale " Best Offers Before" with offers to be submitted to the Agent prior to 3 pm on Monday the 30th of March 2026.

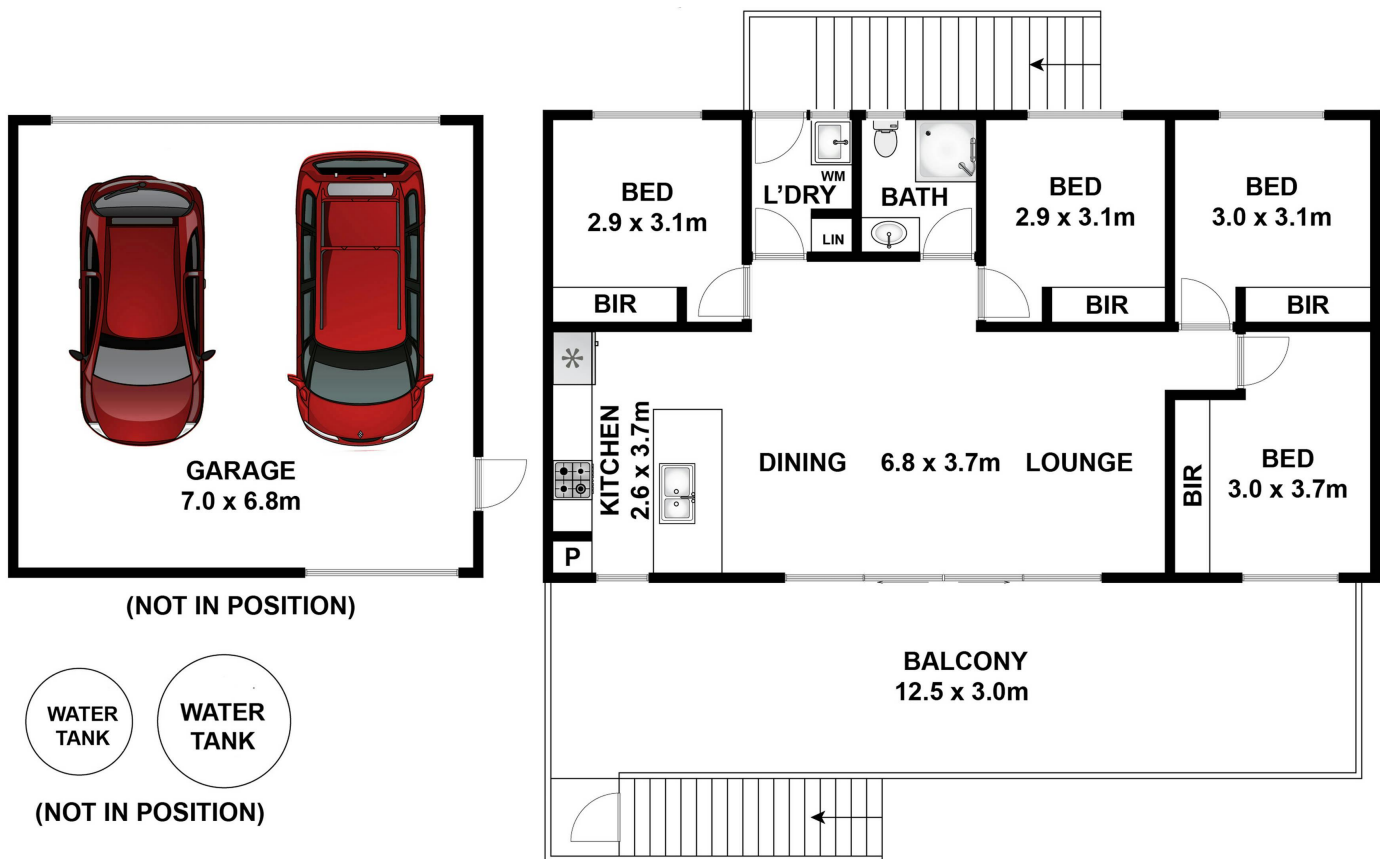
We have in preparing this information used our best endeavours to ensure that the information contained herein is true and accurate but accept no responsibility and disclaim all liability in respect of any errors, omissions, inaccuracies, or misstatements that may occur. Prospective purchasers should make their own enquiries to verify the information contained herein. Elders Real Estate RLA62833

Other features: Area Views, River Views, Water Front, Window Treatments

- Land Area 700.00 square metres
- Bedrooms: 4
- Bathrooms: 1
- 3 car garage
- Double carport







Approx House Area 88m<sup>2</sup>

Whilst [bwrm.com.au](http://bwrm.com.au) has made every attempt to ensure the accuracy of the floor plan contained here, measurements are approximate and no responsibility is taken for any error, omission, or mis-statement. This plan is for illustrative purposes only.

**62 Page Drive, Blanchetown**

**Elders**

**Real Estate**