



44 Wyatt Crescent, SOUTH BURNIE, TAS 7320

A Place To Call Home

Are you searching for a move in ready home with sea views, all while being just minutes from the Burnie CBD? This beautifully presented three bedroom, one bathroom residence in Wyatt Crescent delivers on all levels and it could be yours.

From the moment you step inside, you'll be impressed by the expansive views, sunny aspect, and spacious open plan living, dining and kitchen area. The space is designed to maximise on natural light and everyday comfort. The front windows in the living space are fitted with electric roller blinds for effortless privacy and light control, while a hyper inverter system ensures year-round climate comfort.

The kitchen is both functional and inviting. Featuring a central island bench that doubles as a breakfast bar and dishwasher for convenience. The interior has been recently repainted, giving the home a crisp, neutral feel throughout. You will also find three comfortably sized bedrooms, two of which enjoy ocean views. The renovated bathroom is well-appointed with a bath, shower, toilet and a separate laundry adds further practicality.

Step outside to the front patio, an ideal setting for your morning coffee or evening unwind, with established hedging providing additional privacy. The property also offers

The particulars contained herein are supplied for information only and shall not be taken as a representation in any respect on the part of the vendor or its agent. Interested parties should contact the nominated person or office for full and current details.

TYPE: For Sale

INTERNET ID: 300P192409

SALE DETAILS

**Best Offers Over
\$520,000**

CONTACT DETAILS

Elders Real Estate Burnie
72-74 Wilson Street
Burnie, TAS
03 6432 2311

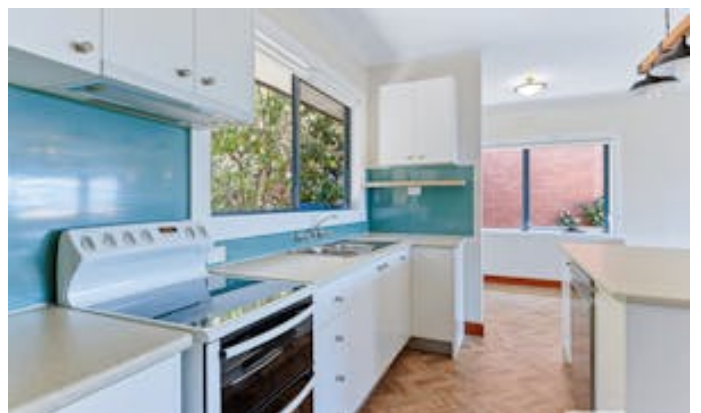
Jorja O'Halloran
0409 039 608

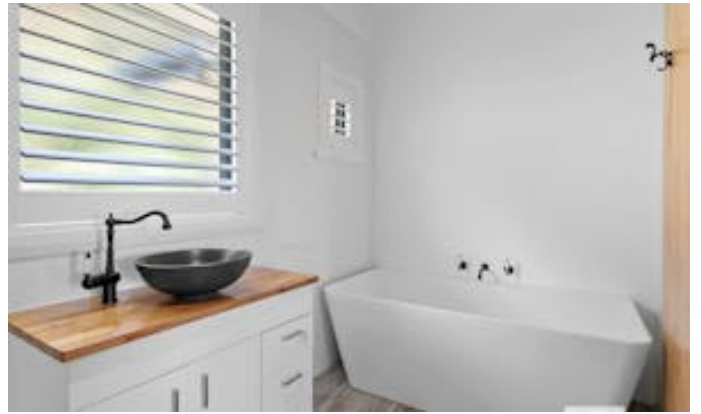
a secure garage and a generous backyard.

Located in South Burnie, this home enjoys the perfect balance of privacy and convenience. Just minutes from Burnie's CBD, local schools, shopping precincts, and waterfront walking tracks. With easy access to everyday amenities while still enjoying a peaceful seaside setting, it's easy to see why this location continues to attract strong buyer interest.

DISCLAIMER: While Elders Real Estate Burnie has taken every care to verify the accuracy of the details in this advertisement, we cannot guarantee its correctness. Prospective buyers or tenants need to take such action as is necessary, to satisfy themselves of any pertinent matters

- Land Area 827.00 square metres
- Building Area: 130.00 square metres
- Bedrooms: 3
- Bathrooms: 1

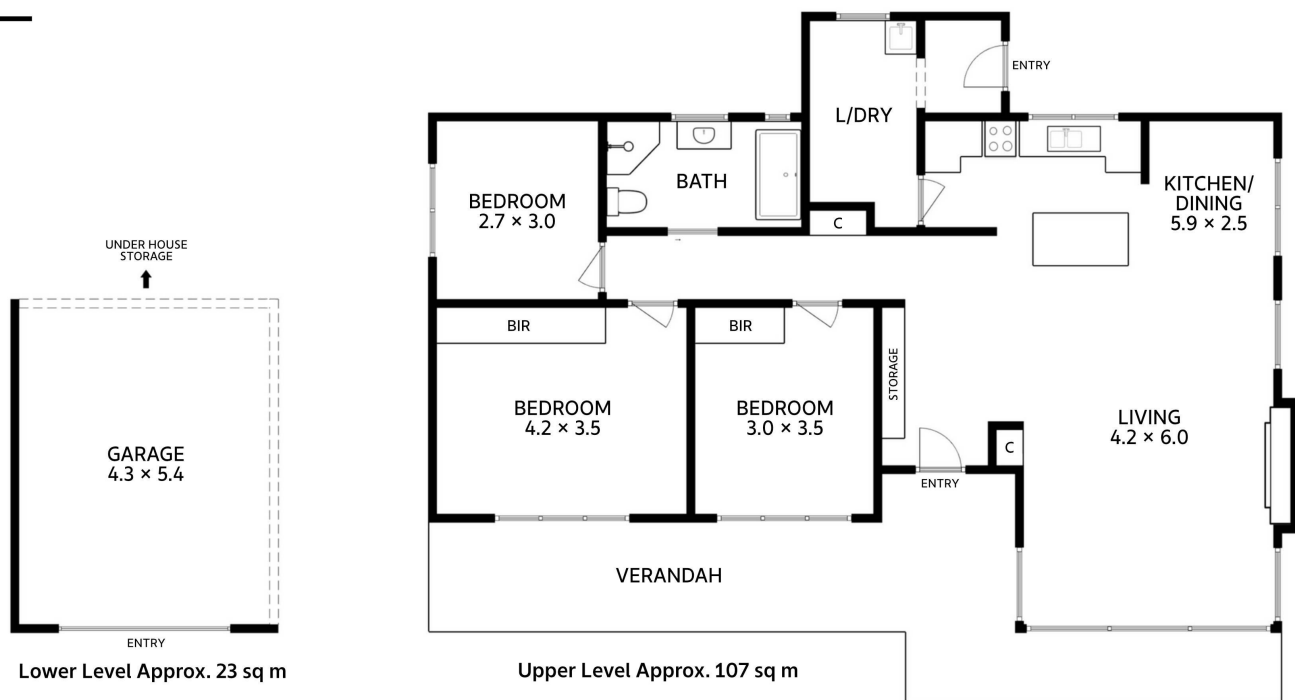








44 Wyatt Crescent South Burnie



Approx. Floor Area 130 sq m
(excluding verandah)

All measurements are internal and approximate.
This plan is a sketch for illustration, not valuation.

