



24 Callistemon Avenue, YARRAWONGA, VIC 3730

Brand-New, Turn-Key Home with Solar

24 Callistemon Avenue, Yarrawonga presents an outstanding opportunity to secure a brand-new, turn-key home offering modern comfort, energy efficiency and affordable living.

Designed with easy living in mind, this stylish three-bedroom, two-bathroom residence features a practical and well-zoned floorplan, ideal for first-home buyers, downsizers or investors. The home is fully completed and ready to enjoy, with landscaping and fencing already in place, allowing you to move straight in without the added expense or hassle.

A solar power system enhances energy efficiency and helps reduce ongoing living costs, while the double lock-up garage provides secure parking and additional storage. Set in a growing, family-friendly estate, this property offers a modern lifestyle in a convenient Yarrawonga location.

Key Features:

- Brand new 3-bedroom, 2-bathroom home.

TYPE: For Sale

INTERNET ID: 300P192450

SALE DETAILS

\$589,000

CONTACT DETAILS

**Elders Real Estate
Yarrawonga**
48 Belmore Street
Yarrawonga, VIC
03 5743 9500

Leigh Ramsdale
0408 385 150

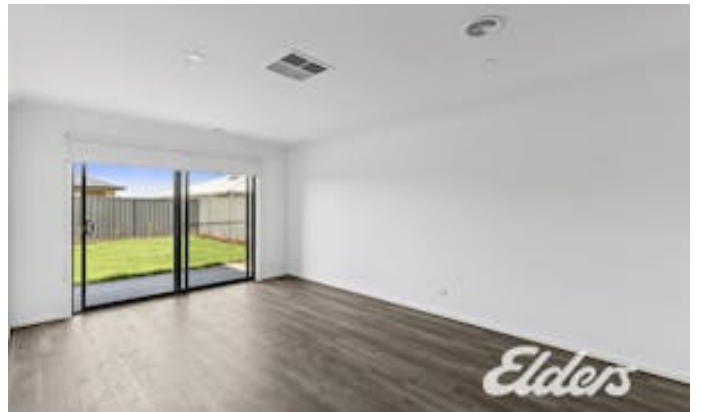
- Turn-key finish â## fully landscaped and fenced.
- Solar system for energy-efficient living.
- Double lock-up garage.
- Great size rear yard with room for a pool.
- Modern, low-maintenance design.
- Located in the popular Glanmire Estate.
- Ideal for first-home buyers, downsizers or investors.

An exceptional opportunity to secure affordable, brand-new living with nothing left to do.

Contact Leigh Ramsdale or Xavier Leslie to arrange your inspection today.

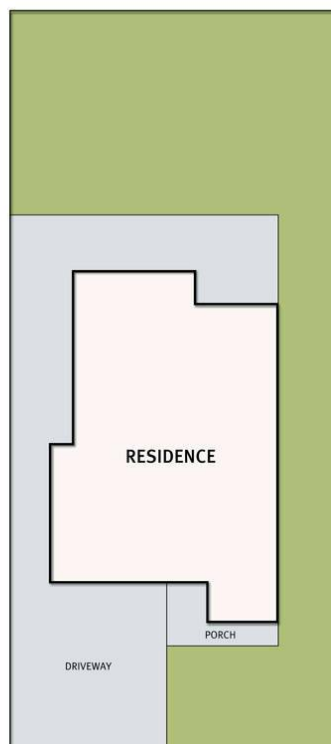
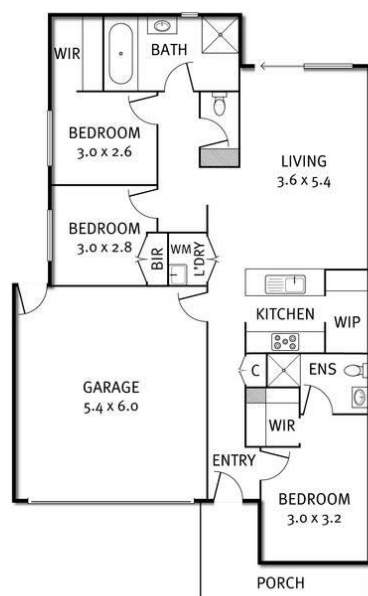
Other features: Carpeted, Close to Schools, Close to Shops, Close to Transport, Exhaust, Heating, Openable Windows

- Land Area 448.00 square metres
- Bedrooms: 3
- Bathrooms: 2
- Car Parks: 2
- Double garage
- Ensuite
- Floorboards





24 Callistemon Avenue, Yarrawonga



THE ABOVE PLAN IS AN ARTIST'S IMPRESSION ONLY, IT INCLUDES ELEMENTS THAT ARE FOR DISPLAY PURPOSES ONLY AND MAY NOT BE TO SCALE. LANDSCAPING SHOWN IS INDICATIVE ONLY. DIMENSIONS ARE APPROXIMATE.