

10 Uplands Drive, MURRAY BRIDGE, SA 5253

Courtyard Charm Steps to Sturt Reserve

Positioned just moments from the riverfront and vibrant Sturt Reserve, this stylish modern villa delivers the perfect blend of lifestyle, location and low maintenance living. With the CBD within easy walking distance and surrounded by quality homes, this is an opportunity that will appeal to a wide range of buyers.

Set on a Torrens Titled allotment, the home makes an immediate impression with its striking stone facade and beautifully manicured gardens. Built in 2016, the residence has been thoughtfully designed for comfort and functionality.

A formal entrance hall welcomes you inside and leads through to a spacious open plan kitchen, living and dining area. This central hub flows seamlessly to the undercover alfresco area, ideal for relaxing or entertaining year round.

The kitchen is a standout feature, complete with a generous island bench and an abundance of cabinetry, offering both practicality and style.

Accommodation includes three well sized bedrooms, all fitted with built in robes, while the main bedroom enjoys the added benefit of an ensuite. The main bathroom is

The particulars contained herein are supplied for information only and shall not be taken as a representation in any respect on the part of the vendor or its agent. Interested parties should contact the nominated person or office for full and current details.

TYPE: For Sale

INTERNET ID: 300P192502

SALE DETAILS

**Best Offers by 12pm
11/05/26 USP (Guide
\$580K)**

CONTACT DETAILS

Murray Bridge
201A Adelaide Road
Murray Bridge, SA
08 8531 9200
RLA: 62833

Jack Freestone
0435 207 475

spacious and finished with floor to ceiling tiling, complemented by a well appointed laundry with additional storage.

Additional features include ducted reverse cycle air conditioning for year round comfort and a 6.6kW solar system for energy efficiency.

Enjoy the lifestyle advantages of being just a short stroll to the riverfront, playground, community club, rowing club and the popular 1924 Steakhouse, with the convenience of the CBD close at hand.

Ideal for investors, first home buyers or those seeking a low maintenance base for retirement, this is a property that delivers on every level.

Homes in this sought after location are in high demand and this one will not last long on the market so act quickly to secure your interest!

For more information or for a FREE market appraisal of your property, please contact Jack Freestone on 0435 207 475.

CT - Volume 6142 Folio 646

Council - Rural City of Murray Bridge

Council Rates - \$2498.25 approx. PA

Zoning - Suburban Neighbourhood

Disclaimer: We have in preparing this information used our best endeavours to ensure that the information contained herein is true and accurate but accept no responsibility and disclaim all liability in respect of any errors, omissions, inaccuracies, or misstatements that may occur. Prospective purchasers should make their own enquiries to verify the information contained herein.

RLA 62833

Other features: Roller Door Access, Window Treatments

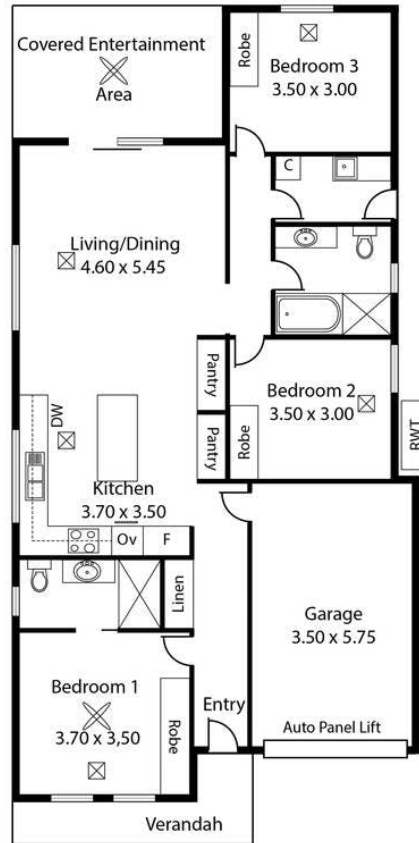
- Land Area 339.00 square metres
- Bedrooms: 3
- Bathrooms: 2
- Car Parks: 1







10 Uplands Drive,
MURRAY BRIDGE



Living:	109.09 sqm
Verandah:	6.00 sqm
Ent. Area:	13.34 sqm
Garage:	22.20 sqm
<u>Total:</u>	<u>150.63 sqm</u>

This Drawing is for illustration purposes only.
Not To Scale. All measurements are internal and approximate.
Details intended to be relied upon should be independently verified.
Produced by Open2view.com