



3/41 Richardson Crescent, PARK GROVE, TAS 7320

Delightful Unit in Park Grove Pocket

Positioned in the heart of sought-after Park Grove, this beautifully presented two-bedroom unit offers comfort, convenience, and low-maintenance living in a prime location.

Step inside to a light-filled open plan living, dining, and kitchen area designed for easy everyday living. The very neat and functional kitchen provides ample storage and workspace, seamlessly connecting to the main living zone to create a welcoming and practical layout.

Both bedrooms are well-sized and thoughtfully appointed, while the bright sunroom adds valuable extra space - perfect for your morning coffee, a reading nook, or simply soaking up the natural light year-round.

Internal access from the secure garage ensures added convenience and peace of mind, making this home ideal for downsizers, first-home buyers, or investors alike.

Set within close proximity to local schools, shopping facilities, and just minutes from the Burnie CBD, this is an outstanding opportunity to secure a quality property in a highly

The particulars contained herein are supplied for information only and shall not be taken as a representation in any respect on the part of the vendor or its agent. Interested parties should contact the nominated person or office for full and current details.

TYPE: For Sale

INTERNET ID: 300P192764

SALE DETAILS

Offers Over \$425,000

CONTACT DETAILS

Elders Real Estate Burnie

72-74 Wilson Street

Burnie, TAS

03 6432 2311

Bruce Jubb

0417987828

desirable location.

DISCLAIMER: While Elders Real Estate Burnie has taken every care to verify the accuracy of the details in this advertisement, we cannot guarantee its correctness. Prospective buyers or tenants need to take such action as is necessary, to satisfy themselves of any pertinent matters

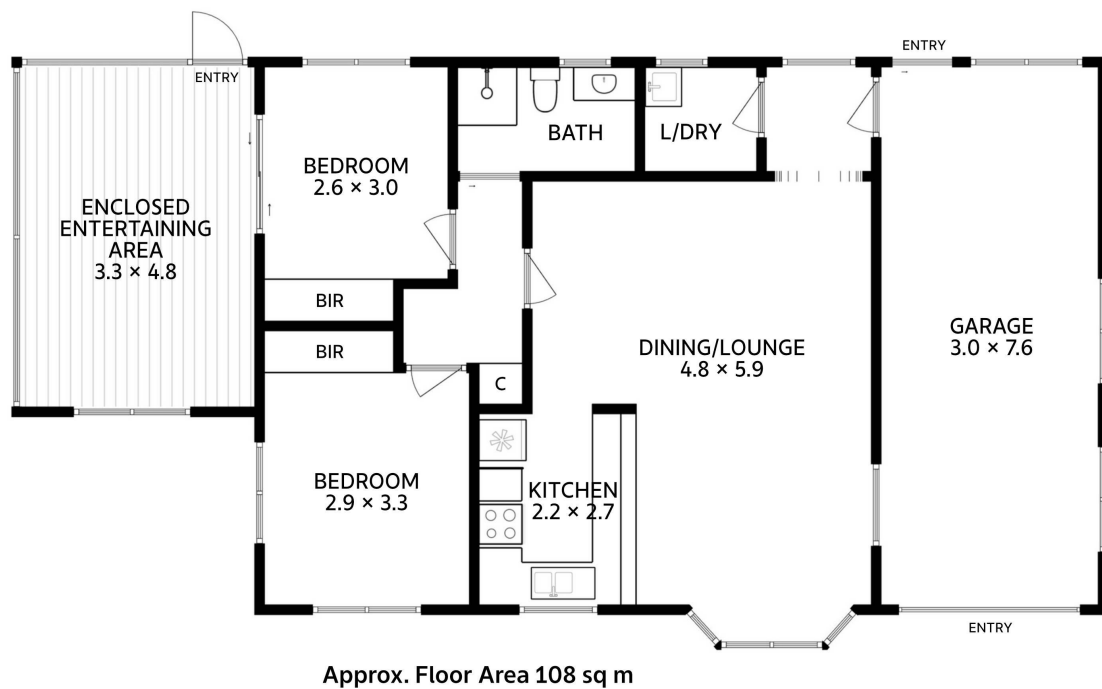
- Land Area 121.00 square metres
- Building Area: 89.50 square metres
- Bedrooms: 2
- Bathrooms: 1
- Single garage







Unit 3/41 Richardson Crescent
Park Grove



All measurements are internal and approximate.
This plan is a sketch for illustration, not valuation.

