

24 Westminster Crescent, RACEVIEW, QLD 4305

Space, Comfort & Convenience – Ready When You Are

Positioned in a quiet, family-friendly pocket of Raceview, this solid brick and tile home delivers space, comfort and immediate appeal. Whether you're looking to move straight in or secure a quality investment, this property presents an outstanding opportunity.

Vacant and ready for immediate occupation, you have the flexibility to live in or lease out straight away.

Property Features:

4 generous bedrooms including a privately positioned master bedroom separate from the additional bedrooms

Other features: Carpeted, Close to Schools, Close to Transport, Window Treatments

- Land Area 671.00 square metres
- Building Area: 128.00 square metres
- Bedrooms: 4
- Bathrooms: 2

The particulars contained herein are supplied for information only and shall not be taken as a representation in any respect on the part of the vendor or its agent. Interested parties should contact the nominated person or office for full and current details.

TYPE: For Sale

INTERNET ID: 300P192801

SALE DETAILS

Offers over \$870000

CONTACT DETAILS

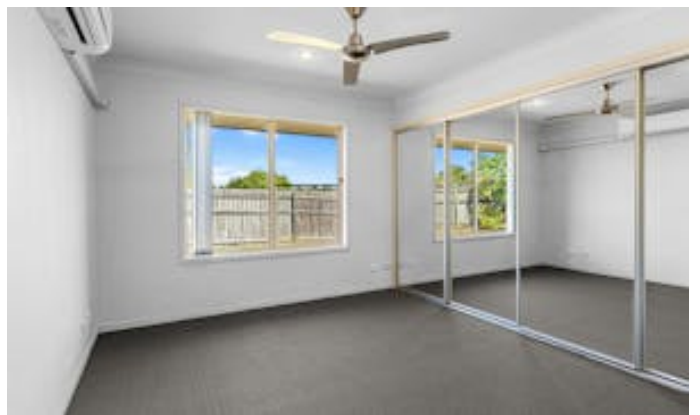
Ipswich

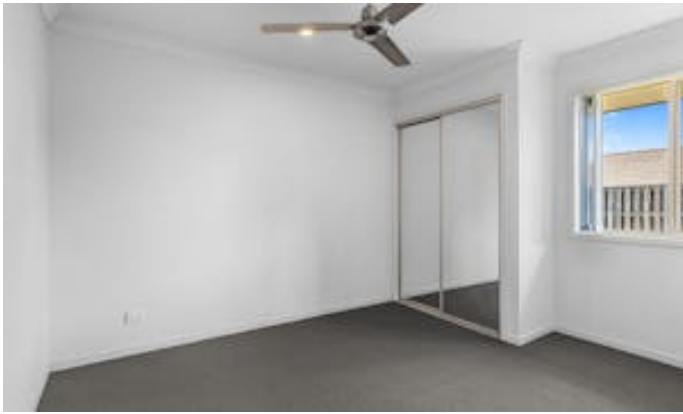
8 Downs Street
North Ipswich, QLD
07 3201 3600

Danielle Gavin

0484 662 416

- Double garage
- Ensuite







24 Westminster Cr, Raceview

4 | 2 | 2 | 671m²

Daniell Gavin | 0484 662 416

Total approx floor area 180m² (including covered external areas)



Whilst every attempt has been made to ensure the accuracy of the floor plan contained here, measurements of doors, windows, rooms and any other items are approximate and no responsibility is taken for error, omission or mis-statement. This plan is for illustrative purposes only and should only be used as such by any prospective purchaser. The services system and appliances shown have not been tested and no guarantee as to their operability or efficiency can be given.