



99 Emmett Street, SMITHTON, TAS 7330

Convenient town living

- Super convenient location just a stone's throw from the main street
- Large sunny open plan living area
- River and panoramic views
- Sheltered and private rear deck
- Single garage/workshop underneath
- Small, easy care yard

- Land Area 291.00 square metres
- Building Area: 109.00 square metres
- Bedrooms: 3
- Bathrooms: 1
- Single carport

TYPE: For Sale

INTERNET ID: 300P192808

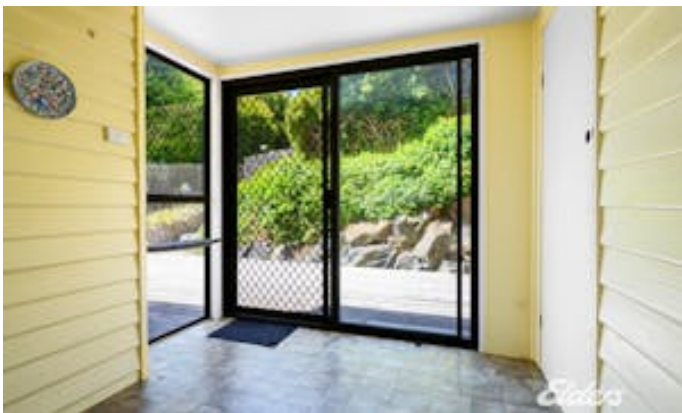
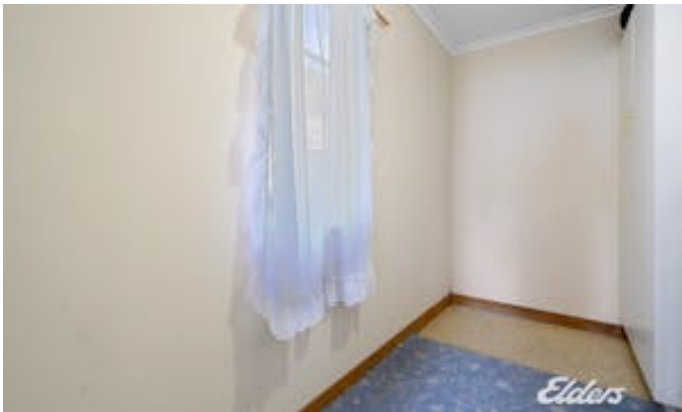
SALE DETAILS

Offers over \$350,000

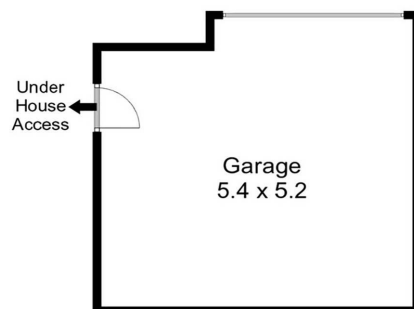
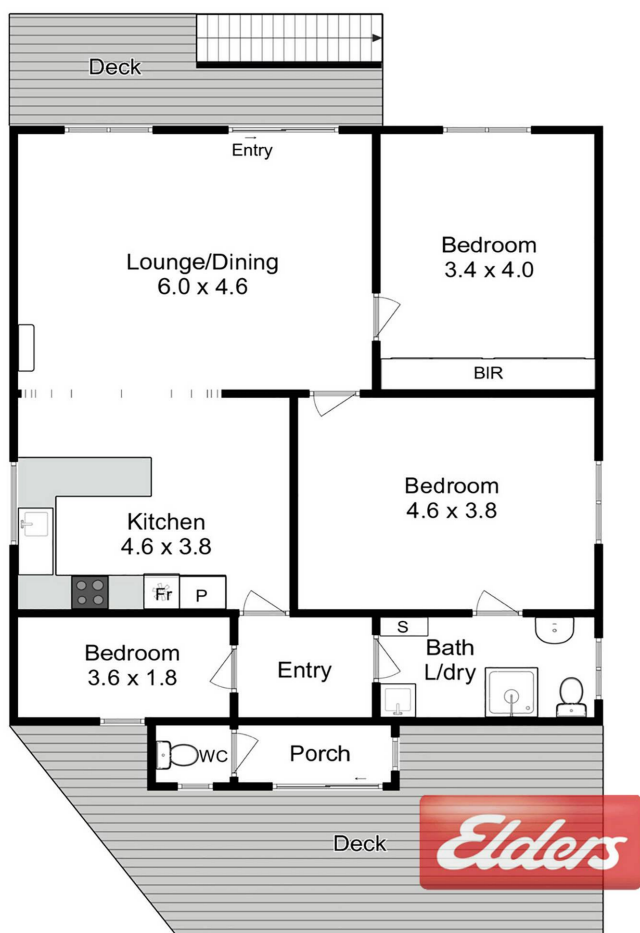
CONTACT DETAILS

Duncan Spinks
0429 352 004









Elders Circular Head
Not to scale.
This floorplan is a sketch, and all dimensions stated are approximate.
Approx floor area 110 sq m
(Excluding decks & garage (approx 26 sq m))
© Real Image Tasmania