



## 5397 BALAKLAVA Road, AUBURN, SA 5451

### Country Views

Positioned in an elevated setting, this beautifully designed home enjoys sensational views and a wonderful sense of space and light.

Built in 2010, the property features impressive cathedral ceilings, stunning exposed timber beams, and a generous open-plan layout combining the kitchen, dining, and living areas. The spacious timber kitchen offers excellent storage with ample cupboards and bench space, along with a halogen cooktop, bench oven, built-in microwave, large pantry, and double fridge cavity - perfect for modern living.

The inviting living area is complemented by an ornate timber-style fireplace with electric heating, creating a warm and welcoming atmosphere.

Downstairs you'll find two spacious bedrooms, a well-appointed main bathroom with deep bath, shower over bath, vanity, and toilet, plus additional storage cupboards and a full-sized laundry.

Upstairs is dedicated to a private master retreat featuring walk-in robes, excellent storage options, and a second living area or 4th bedroom. A separate toilet with hand

The particulars contained herein are supplied for information only and shall not be taken as a representation in any respect on the part of the vendor or its agent. Interested parties should contact the nominated person or office for full and current details.

**TYPE:** For Rent

**INTERNET ID:** 300P193041

#### RENTAL DETAILS

**Rent / Lease:**

**\$500 pw**

#### CONTACT DETAILS

**Elders Real Estate Clare Valley / Burra**

230 Main North Road  
Clare, SA  
08 8842 9300

**Mel Helbig**

basin is also located on this level for added convenience.

This home combines character, comfort, and practicality in a truly appealing elevated location.

\$500 per week with furniture - 4 Bedrooms

\$450per week without furniture - 3 Bedrooms

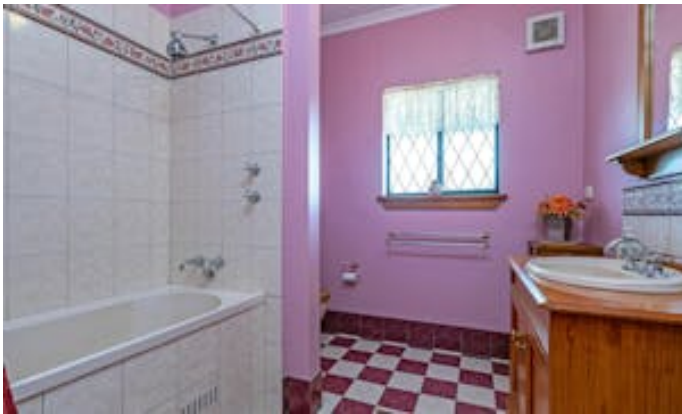
Other features: Close to Schools, Close to Shops

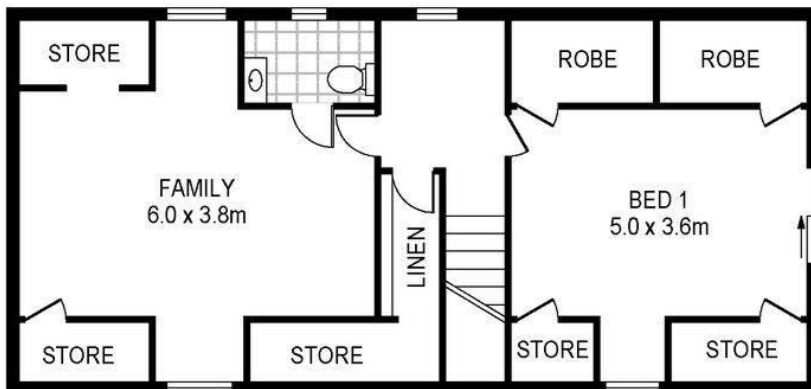
- This property is: Unfurnished
- Pets: No
- Available on: 02/03/26
- Bedrooms: 3
- Bathrooms: 1
- Car Parks: 4
- Single garage



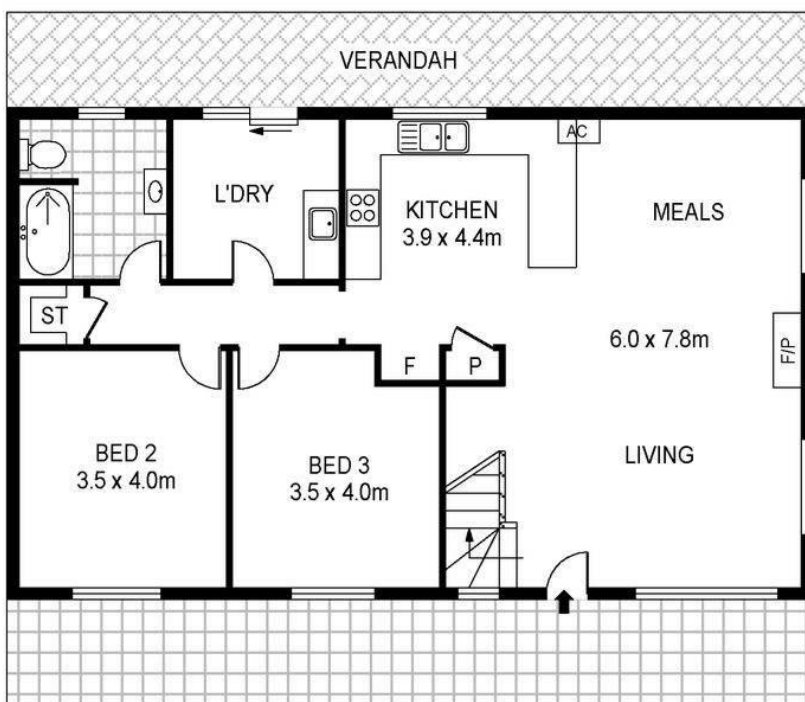








UPPER LEVEL



GROUND LEVEL

