

78-80 Mulgundawah Road, MURRAY BRIDGE, SA 5253

Prime 1728m² Development Site

Set on a substantial 1,728m² allotment in central Murray Bridge, just minutes from the popular Newbridge Estate, this versatile property offers outstanding potential for developers, investors and renovators alike.

The property features a three-bedroom timber frame home that requires only minor renovation, providing buyers with the flexibility to renovate and retain, occupy, invest, or, subject to the necessary consents, clear the site and maximise its development potential.

Also located on the property is a large shed with concrete flooring and power connected, together with an older mechanic's workshop.

With Murray Bridge continuing to grow and demand for housing remaining strong, large allotments in established locations are becoming increasingly difficult to secure. Whether you're looking for your next development project, a property to add value to, or a substantial landholding with future possibilities, this property presents an exciting opportunity.

TYPE: For Sale

INTERNET ID: 300P193192

SALE DETAILS

\$650,000 - \$700,000

CONTACT DETAILS

Murray Bridge
Shop 3, 7 Seventh Street
Murray Bridge, SA
08 8572 8000
RLA: 62833

Jack Freestone
0435 207 475

Key Features:

- Generous 1,728m² allotment
- Development potential (STCC)
- Zoned Suburban Neighbourhood
- Three-bedroom timber frame home requiring minor renovation
- Large shed with concrete floor and power connected
- Former mechanic's workshop
- Established central Murray Bridge location
- Close to the popular Newbridge Estate
- Close to schools, shopping, medical facilities and town amenities

Large allotments of this size in established Murray Bridge locations are becoming increasingly rare. Whether your plans involve development now or in the future (STCC), this is an opportunity not to be missed.

For more information or for a FREE market appraisal of your property, please contact Jack Freestone on 0435 207 475.

CT - Volume 6096 Folio 291

Council - Rural City of Murray Bridge

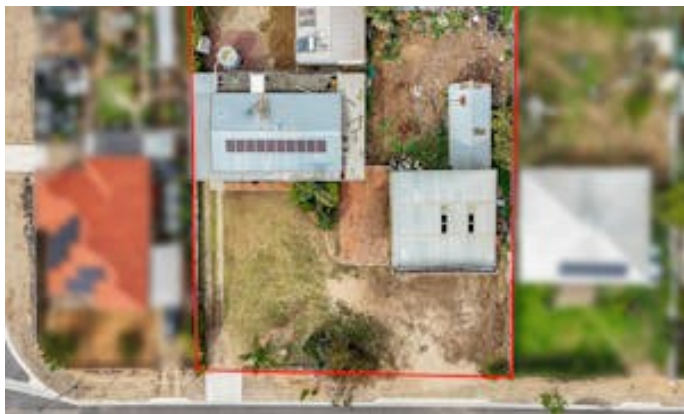
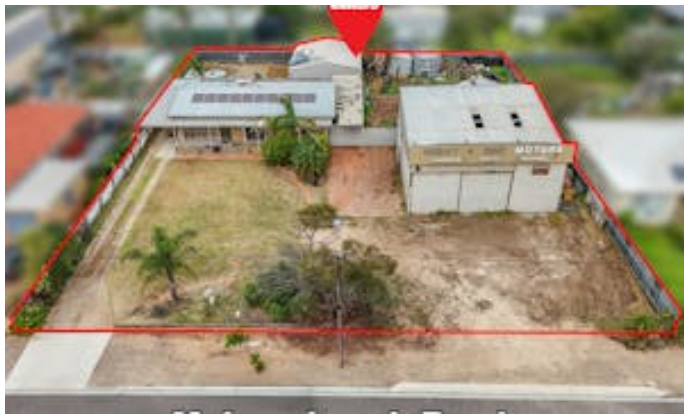
Council Rates - TBC

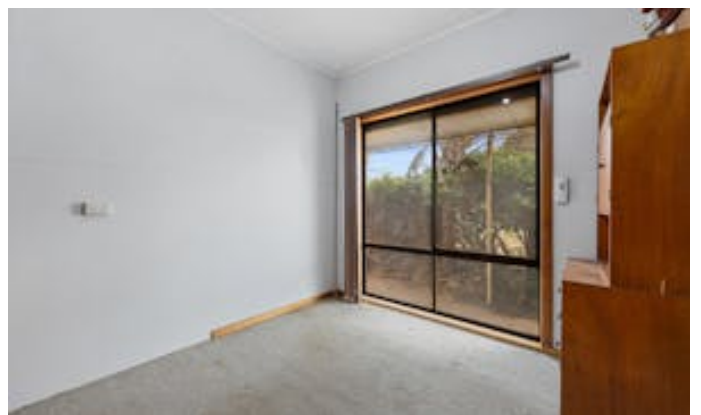
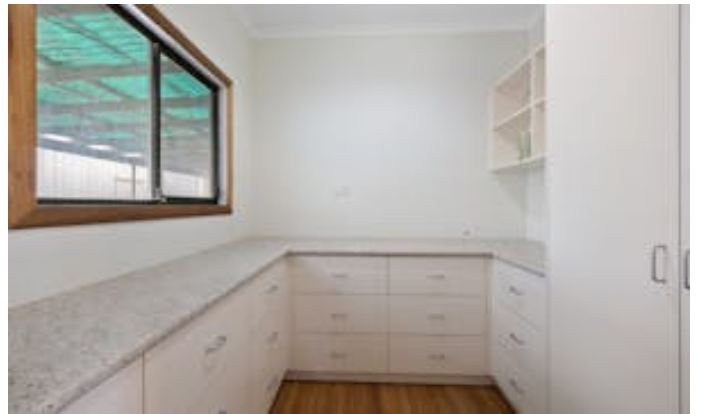
Zoning - Suburban Neighbourhood - SN

Disclaimer: We have in preparing this information used our best endeavours to ensure that the information contained herein is true and accurate but accept no responsibility and disclaim all liability in respect of any errors, omissions, inaccuracies, or misstatements that may occur. Prospective purchasers should make their own enquiries to verify the information contained herein.

RLA 62833

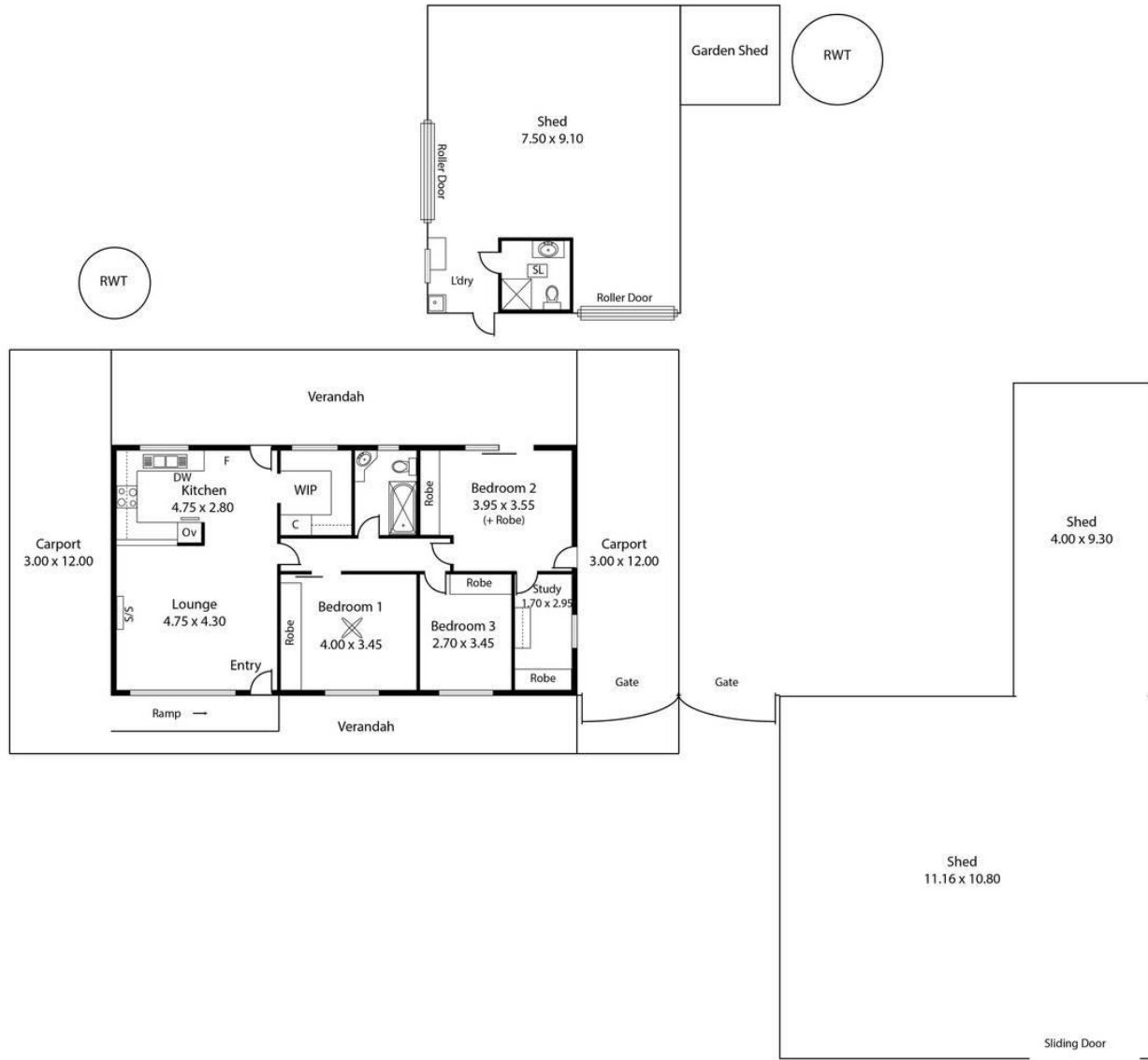
- Land Area 1,728.00 square metre
- Bedrooms: 3
- Bathrooms: 1
- Car Parks: 10







78-80 Mulgundawah Road,
MURRAY BRIDGE



Living:	104.25 sqm
Verandah:	65.33 sqm
Sheds:	225.98 sqm
Carports:	72.00 sqm
Total:	467.56 sqm

This Drawing is for illustration purposes only.
Not To Scale. All measurements are internal and approximate.
Details intended to be relied upon should be independently verified.
Produced by Open2view.com