



12 McHenry Street, MURRAY BRIDGE, SA 5253

Central Location

Built circa 1955, this solid residence offers a warm sense of history paired with modern updates, including fresh paint and brand-new floor coverings throughout. Inside, you will walk into the living area with bedroom to the side flowing into the light filled dining area with bedroom two. There is a small bathroom with both bath and shower, functional kitchen and an office area/kids play room. Perfect for first-home buyers, downsizers, or savvy investors.

Set on an expansive approx. 920m² allotment, the real magic happens outdoors. The generous backyard is a true blank canvas-ready for you to design your dream garden, and/or outdoor entertaining area. Fully fenced for peace of mind, it's ideal for families, pets, or those who simply enjoy space to move.

Car enthusiasts, tradies, or hobbyists will be drawn to the impressive large shed with a concrete floor, complemented by ample parking for up to four vehicles-offering flexibility rarely found at this price point. The property also has a carport to house two vehicles.

Location is everything, and this property delivers. Positioned in a central and convenient pocket of Murray Bridge, you're just moments from local daycares, kindergartens, schools, and within easy reach of the CBD-making everyday living

The particulars contained herein are supplied for information only and shall not be taken as a representation in any respect on the part of the vendor or its agent. Interested parties should contact the nominated person or office for full and current details.

TYPE: For Sale

INTERNET ID: 300P193460

SALE DETAILS

\$520,000 - \$550,000

CONTACT DETAILS

Murray Bridge

201A Adelaide Road

Murray Bridge, SA

08 8531 9200

RLA: 62833

Ali Bolt

0437 290 698

effortless.

Whether you're looking to move straight in, invest, or unlock future potential, this property is packed with possibilities.

For more information or for a FREE market appraisal of your property, please contact Ali Bolt on 0437 290 698.

CT - Volume 5697 Folio 659

Council - Rural City of Murray Bridge

Council Rates - TBA

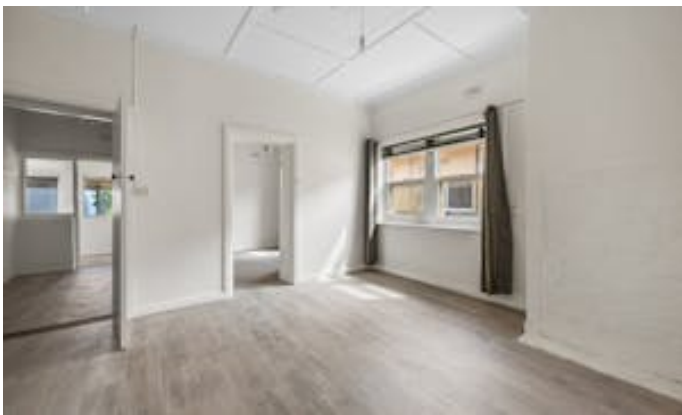
Zoning - Suburban Neighbourhood

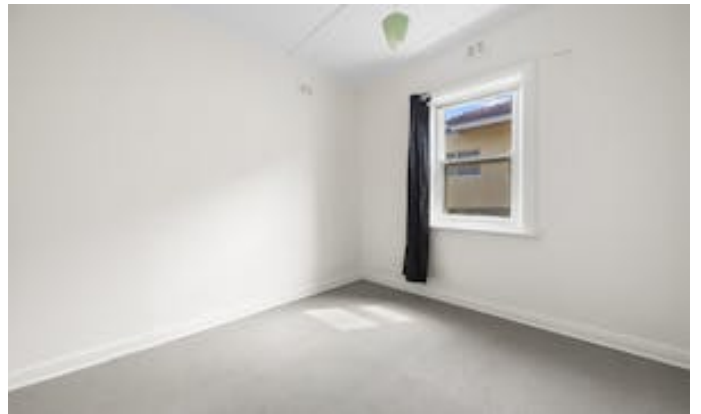
Disclaimer:

We have in preparing this information used our best endeavours to ensure that the information contained herein is true and accurate but accept no responsibility and disclaim all liability in respect of any errors, omissions, inaccuracies, or misstatements that may occur. Prospective purchasers should make their own enquiries to verify the information contained herein.

Elders Real Estate RLA62833

- Land Area 920.00 square metres
- Bedrooms: 2
- Bathrooms: 1
- Car Parks: 4

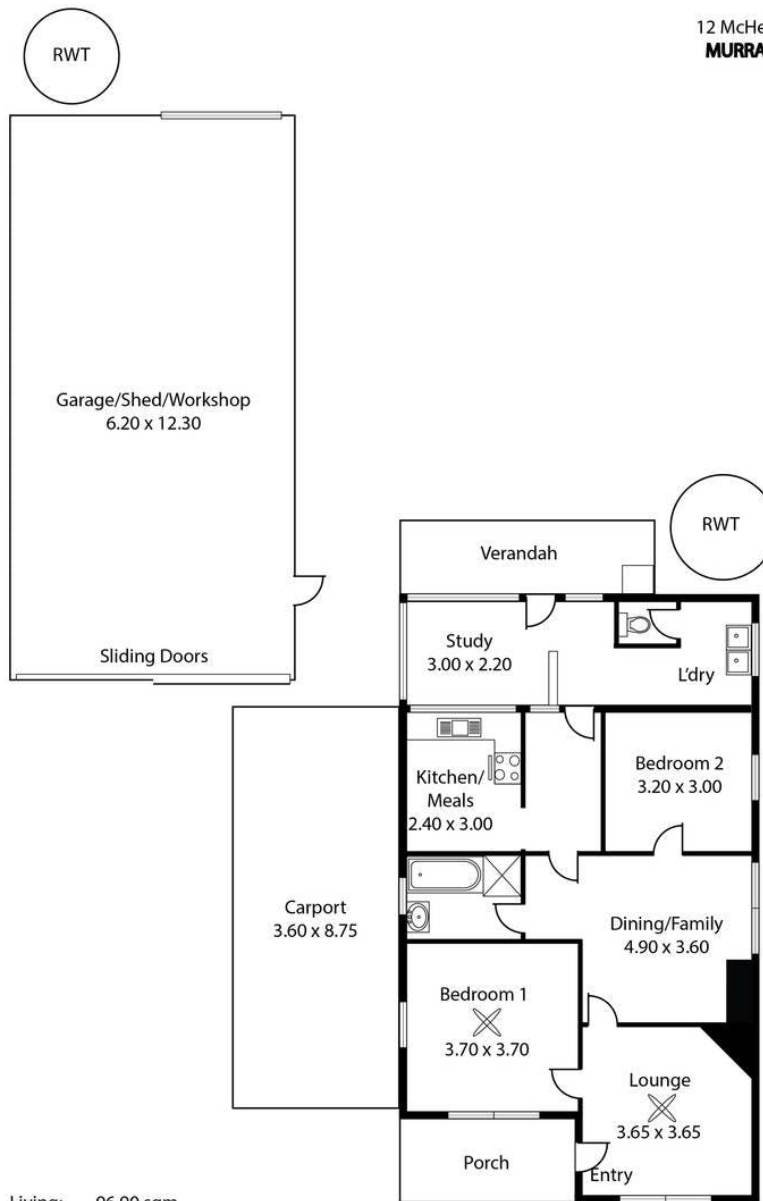








12 McHenry Street,
MURRAY BRIDGE



Living:	96.90 sqm
Porch:	6.84 sqm
Verandah:	8.80 sqm
Garage:	76.26 sqm
Carport:	31.50 sqm
Total:	220.30 sqm

This Drawing is for illustration purposes only.
Not To Scale. All measurements are internal and approximate.
Details intended to be relied upon should be independently verified.

Produced by Open2view.com