



## 27A Swanport Road, MURRAY BRIDGE, SA 5253

**POSITION PERFECT – UNBEATABLE CBD LOCATION WITH ENDLESS POTENTIAL!**

Just metres from the CBD, this solid brick residence occupies a generous 1,125m<sup>2</sup> allotment and presents an exciting opportunity for renovators, investors, entrepreneurs, or anyone with a vision to create something truly special.

Packed with potential, the home offers five bedrooms, two bathrooms plus an additional shower room, a spacious kitchen, and a balcony showcasing fantastic views. Downstairs features a second living area complete with a kitchenette and partially finished bathroom, providing excellent flexibility for extended family living, guest accommodation, or a home-based business setup.

The versatile floor plan makes it ideal for those wanting to run a business from home (STCC) while maintaining privacy and separation from family life. With ample space and a highly sought-after location, the possibilities are endless.

This is a property that needs some love, attention, and a healthy dose of imagination-but the rewards could be substantial. Opportunities like this, in such a prime position, are becoming increasingly rare.

**TYPE:** Auction

**INTERNET ID:** 300P193463

### AUCTION DETAILS

11:00am, Thursday June 25th, 2026

### CONTACT DETAILS

**Murray Bridge**  
Shop 3, 7 Seventh Street  
Murray Bridge, SA  
08 8572 8000  
RLA: 62833

**Ali Bolt**  
0437 290 698

Bring your vision, roll up your sleeves, and unlock the incredible potential waiting here!

For more information or for a FREE market appraisal of your property, please contact Ali Bolt on 0437 290 698.

CT - Volume 5669 Folio 304

Council - Rural City of Murray Bridge

Council Rates - TBA

Zoning - Urban Activity Centre - UAC

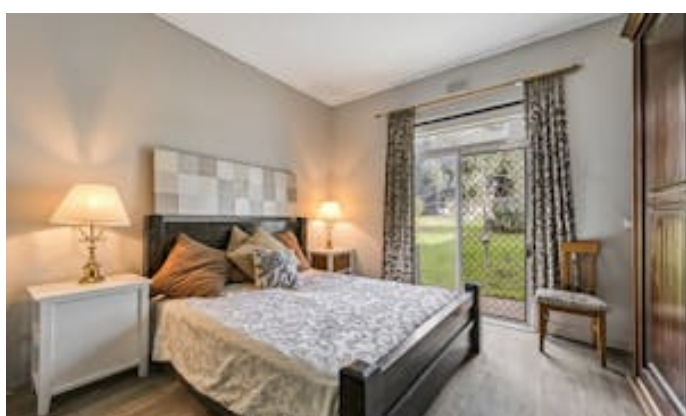
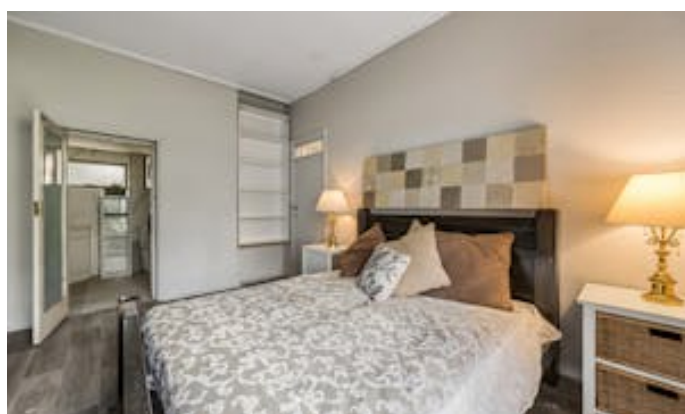
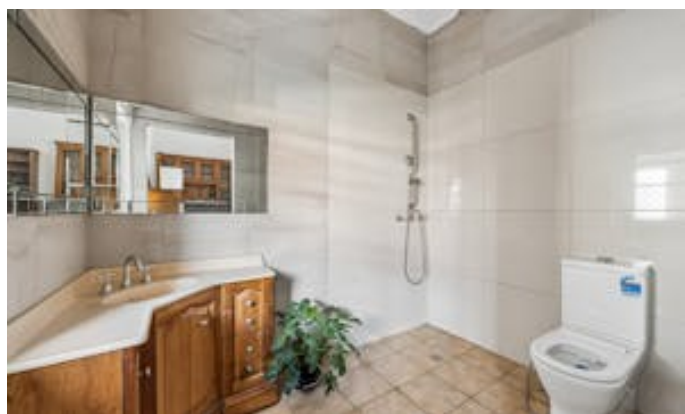
Disclaimer:

We have in preparing this information used our best endeavours to ensure that the information contained herein is true and accurate but accept no responsibility and disclaim all liability in respect of any errors, omissions, inaccuracies, or misstatements that may occur. Prospective purchasers should make their own enquiries to verify the information contained herein.

Elders Real Estate RLA62833

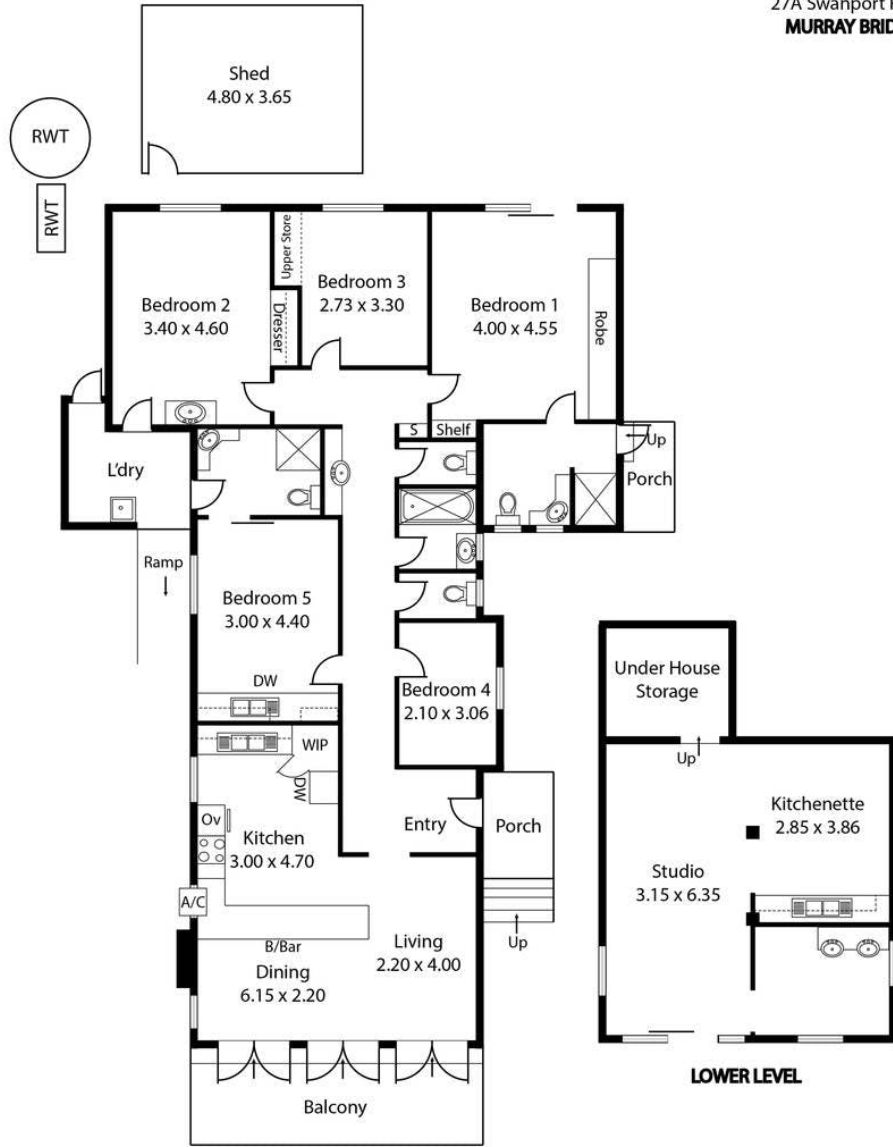
- Land Area 1,125.00 square metre
- Bedrooms: 5
- Bathrooms: 3
- Car Parks: 2







27A Swanport Road,  
MURRAY BRIDGE



Living:	151.12 sqm	<b>UPPER LEVEL</b>
Porch:	5.85 sqm	
Balcony:	13.44 sqm	
L'dry:	5.95 sqm	
Studio:	42.88 sqm	
Under House Store:	7.50 sqm	
<b>Total:</b>	<b>226.73 sqm</b>	

This Drawing is for illustration purposes only.  
Not To Scale. All measurements are internal and approximate.  
Details intended to be relied upon should be independently verified.  
Produced by [Open2view.com](http://Open2view.com)