



## 42 Black River Road, BLACK RIVER, QLD 4818

### 20 Acres to Call Your Own!

Set on approximately 20 acres of usable land in the popular rural community of Black River, this lifestyle property offers space, privacy and endless potential, all within easy reach of everyday conveniences.

The home features five bedrooms, two bathrooms, a modern kitchen and tiled living areas, providing comfortable family accommodation while you enjoy the benefits of acreage living.

Outside, the property is well equipped with five fenced paddocks, a licensed bore, town water, a large workshop/shed, chook pen and an in-ground swimming pool. Whether you're looking for room for horses, livestock, machinery or simply space for the family to enjoy, this property offers the flexibility to create the rural lifestyle you've been searching for.

Conveniently located just minutes from Deeragun Shopping Centre, North Shore, schools, medical facilities and with easy access to the Bruce Highway, you'll enjoy the peace of country living without sacrificing convenience.

**TYPE:** For Sale

**INTERNET ID:** 300P193650

#### SALE DETAILS

**Offers Over \$1,400,000**

#### CONTACT DETAILS

**Brenda Thompson**  
0447 072 899

Property Features:

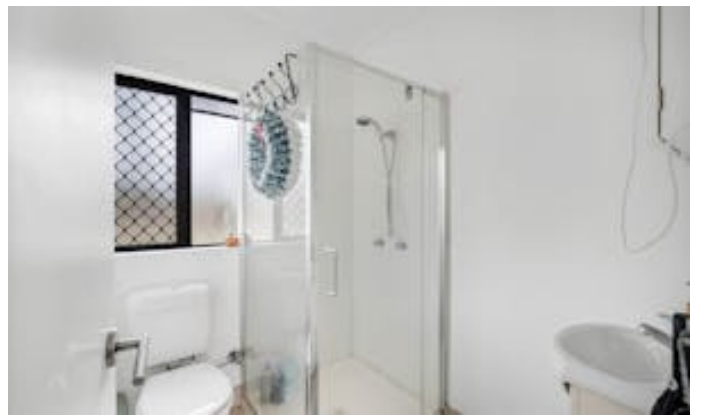
- Approximately 20 acres of usable land
- Five-bedroom, two-bathroom home
- Modern kitchen
- Tiled living areas
- In-ground swimming pool
- Covered entertainment area
- Five fenced paddocks
- Licensed bore plus town water
- Large powered workshop/shed
- Chook pen
- \* Electric gate entrance

Large acreage parcels in Black River are becoming increasingly difficult to secure. This is a fantastic opportunity to purchase a well-established rural property with the space and infrastructure to enjoy the North Queensland lifestyle.

Call Brenda Thompson to view this home. Ph 0447 072 899

Other features: Close to Schools, Close to Shops, Pool, Toilet Facilities

- Land Area 20 acres
- Bedrooms: 5
- Bathrooms: 2
- Single garage









**TOTAL: 155 m<sup>2</sup>**  
 1st floor: 155 m<sup>2</sup>  
 EXCLUDED AREAS: GARAGE: 101 m<sup>2</sup>, SHED: 3 m<sup>2</sup>, PATIO: 117 m<sup>2</sup>,  
 COVERED PATIO: 37 m<sup>2</sup>, PORCH: 15 m<sup>2</sup>, WALLS: 17 m<sup>2</sup>

FLOOR PLAN CREATED BY CUBICASA APP. MEASUREMENTS DEEMED HIGHLY RELIABLE BUT NOT GUARANTEED.