



9/5 Manila Place, WOOLNER, NT 0820

ELEVATED LIVING WITH A TROPICAL TWIST

Take an external staircase up to the front porch and enter directly into the generous, open-plan living/dining area where abundant natural light and contemporary neutral tones create a fresh modern feel.

Wide glass sliding doors open onto the good-sized, covered balcony that provides plenty of space to entertain with a lush tropical outlook.

Back inside, the well-presented kitchen adjoins the main living/dining area at rear and features a rounded breakfast bar, space to put in a new dishwasher and cabinetry in modern white including a large corner pantry.

Two good-sized bedrooms join the main bathroom off the living/dining area. Both bedrooms capture plentiful natural light and feature mirrored built-in robes.

The main bathroom and master ensuite are both well presented; internal laundry facilities are set opposite the main bathroom and a built-in linen cupboard provides additional storage space.

Parking for two cars with remote gate access into the quality complex completes the package.

- Land Area 129.00 square metres
- Bedrooms: 2
- Bathrooms: 2
- Car Parks: 2

TYPE: Sold

INTERNET ID: 300P194151

SALE DETAILS

SOLD

CONTACT DETAILS

Darwin

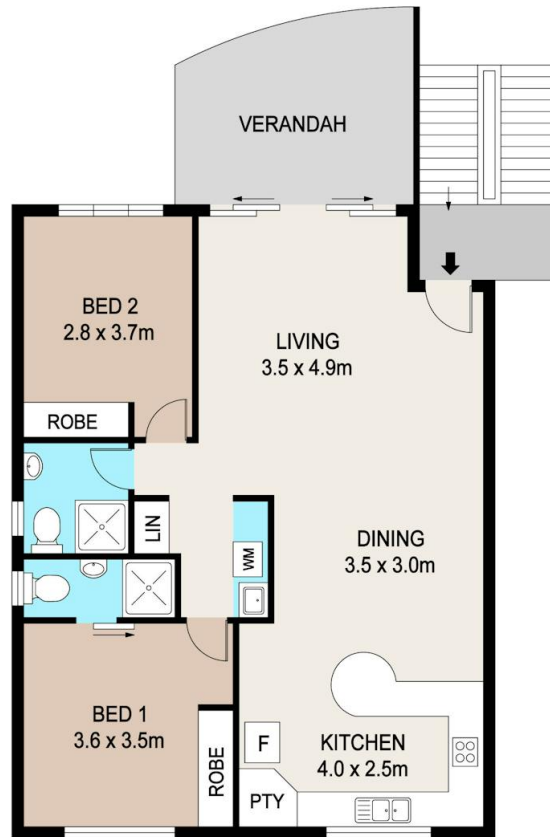
70 Smith Street

DARWIN, NT

08 8946 0500

Judy Blore

0408 898 551



9/5 MANILA PL, WOOLNER

DISCLAIMER

PLANS SHOWN ARE FOR MARKETING PURPOSES ONLY. ALL DIMENSIONS ARE APPROXIMATE AND NOT TO SCALE. THEY ARE SUBJECT TO ERRORS AND INACCURACIES AND NO LIABILITY WILL BE ACCEPTED. INTERESTED PARTIES SHOULD MAKE THEIR OWN INQUIRES.