

18 Milkwood Circuit, KARAMA, NT 0812

PRIVATE OASIS SURROUNDED BY OUTSTANDING GARDENS!

Tucked away in a quiet circuit location, 18 Milkwood Circuit delivers the kind of lifestyle Territorians love, elevated living, sprawling gardens and generous outdoor spaces. This spacious three-bedroom split level elevated home offers a fantastic open plan layout with three bedrooms upstairs and downstairs features an extra-large multipurpose room, perfect as a fourth bedroom, guest retreat or home office. With additional features such as an inviting inground spa framed by lush tropical greenery, a massive easement free 983sqm land allotment, this is a home that feels warm, welcoming and wonderfully functional with room for families, entertainers and anyone who values space, serenity and privacy.

What we love about this home:

- Expansive polished timber flooring which adds warmth, character and durability throughout the upper level
- Stunning, modern kitchen with contemporary finishes, island bench with stone benchtops and waterfall edging, electric oven, electric cooktop, plenty of bench space, double sink, large bay windows, large fridge space, microwave space, excellent storage and a clean, stylish aesthetic finish throughout

TYPE: For Sale

INTERNET ID: 300P194622

SALE DETAILS

FASTRAK

CONTACT DETAILS

leanyer

Shop 13B Hibiscus
Shopping Town 8 Leanyer
Drive Leanyer
DARWIN, NT
08 8995 7500

Derek Hart

0409 702 631

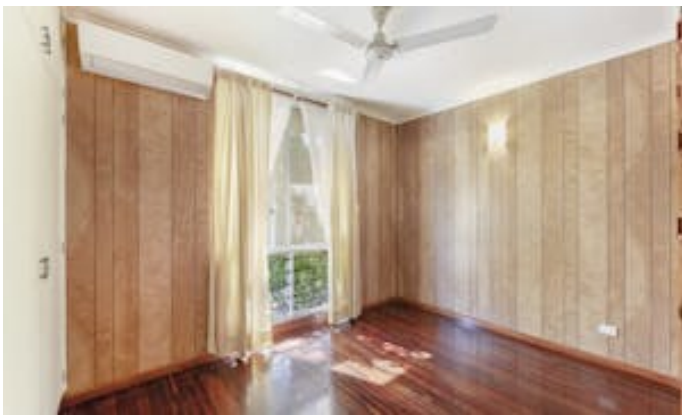
- Three great sized bedrooms upstairs plus a versatile ground level room ideal as an 4th bedroom, office or studio room
- Superb main bathroom with a fresh, modern design featuring walk-in shower recess, floor to ceiling tiles, large mirrored vanity and beautifully appointed stainless-steel fixtures and fittings, toilet is separate
- Ground level features the semi-enclosed laundry, second toilet and storeroom for additional storage
- Inground spa is perfect for a tropical escape for cooling off and unwinding amongst the lush gardens
- Coded garden shed which is secure, powered and ideal for tools and the home hobbies
- Expansive space beneath the house with generous undercover area for parking, outdoor living and entertaining
- Remarkable established tropical gardens with paved pathways weaving through lush greenery, creating a peaceful, resort style atmosphere
- 983sqm land allotment, easement free offering privacy, space and comfort

The combination of elevated living, modern features, lush gardens and versatile additional spaces makes this an appealing family home. Whether you're growing a family, working from home or simply looking for a private oasis, this home delivers comfort, charm and tranquillity. Centrally located to the Casuarina shopping centre, Darwin hospital, local shopping centres, University, local schools and Darwin airport, you will enjoy the space and comfort for years to come. Organise your inspection today.

The current owner has placed the property on the FASTRAK sale process and is willing to look at all offers as there is no set price. **Make a Start with Team Derek Hart**.

Other features: Close to Schools, Close to Shops, Close to Transport, Spa

- Land Area 983.00 square metres
- Bedrooms: 3
- Bathrooms: 1
- Car Parks: 2
- Floorboards











Scale in metres. Indicative only. Dimensions are approximate. All information contained herein is gathered from sources we believe to be reliable. However we cannot guarantee its accuracy and interested persons should rely on their own enquiries.

18 Milkwood Circuit, Karama