



1/18 Glendower Street, MOUNT LOFTY, QLD 4350

Spacious Townhouse In Tightly Held Eastside Quiet Location - Backing onto Parkland.

Positioned in a quiet, boutique complex and backing directly onto tranquil parkland, Unit 1 at 18 Glendower Street offers an exceptional opportunity to secure a spacious townhouse in one of Toowoomba's most desirable and tightly held locations. Combining privacy, space, and convenience, this residence is perfectly suited to owner-occupiers and savvy investors alike.

Features include:

- Spacious open-plan lounge, living and dining area filled with natural light
- Updated kitchen with practical layout and ample storage
- Functional laundry with direct access to a private courtyard
- Peaceful outdoor courtyard-ideal for relaxing or entertaining
- Exceptionally large master bedroom with built-in robes
- Generous second bedroom

TYPE: For Sale

INTERNET ID: 300P194696

SALE DETAILS

Offers over \$559,000

CONTACT DETAILS

**Elders Real Estate
Toowoomba**
202 Hume Street
Toowoomba, QLD
07 4633 6500

Sue Edwards
0437 377 988

- Well-appointed central bathroom
- Positioned in a small, tightly held complex backing onto parkland
- Quiet, private setting with a strong sense of community
- Minutes to quality Eastside schools, parks, shopping and amenities
- Approx. 10 minutes to the new Toowoomba Hospital
- Easy access to the Toowoomba CBD and Toowoomba Bypass

Opportunities in this tightly held pocket are rarely offered to market. Whether you're looking for lifestyle, location, or a smart investment, this property delivers on all fronts. Arrange your inspection today and experience the charm and convenience for yourself.

Contact Sue Edwards â## Elders Real Estate

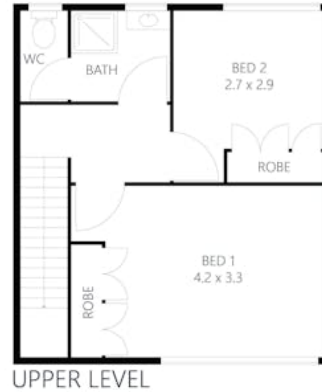
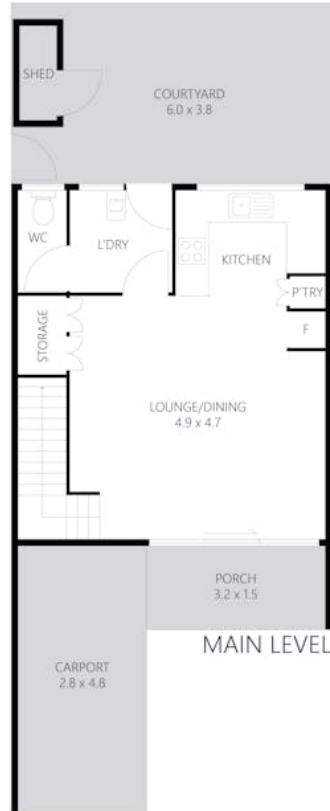
Phone 0437 377 988 or Email : sue.edwards@elders.com.au

Other features: Close to Schools, Close to Shops, Close to Transport

- Bedrooms: 2
- Bathrooms: 1
- Single carport







1/18 Glendower Street, Mount Lofty

Every effort was made to ensure the accuracy of this floor plan. However, all measurements in this floor plan are approximate and should only be used for representational purposes. This floor plan was produced by SK MEDIA



- 2
- 1
- 1

