



13 Acacia Drive, ROMAINE, TAS 7320

The "Feels Like Home" Kind of Place

Positioned in a quiet pocket of Romaine, this well-kept three-bedroom home offers a practical and comfortable lifestyle with a layout that just works.

Step inside and you're greeted by a warm, inviting lounge that immediately feels like home. This space flows effortlessly into the open-plan kitchen and dining area, creating a central hub that suits both relaxed day-to-day living and casual entertaining. The layout is open without feeling oversized, making it functional and easy to live in.

The home features three bedrooms, with two including built-in wardrobes, providing useful storage and keeping things tidy and organised. The bathroom is neat and central to the home, with the added convenience of a separate toilet-something always appreciated in a busy household.

Year-round comfort is well covered, with a wood heater bringing a cosy atmosphere in winter, complemented by reverse cycle heating and cooling for instant comfort no matter the season.

Outside, the property continues to impress with practical features. There is an

The particulars contained herein are supplied for information only and shall not be taken as a representation in any respect on the part of the vendor or its agent. Interested parties should contact the nominated person or office for full and current details.

TYPE: For Sale

INTERNET ID: 300P194770

SALE DETAILS

Offers Over \$499,000

CONTACT DETAILS

Elders Real Estate Burnie

72-74 Wilson Street

Burnie, TAS

03 6432 2311

Bruce Jubb

0417987828

undercover carport for sheltered parking and easy access into the home, as well as a single garage/workshop that offers excellent versatility-whether it's used for storage, projects, or extra space for tools and equipment. The garden is neat and well cared for, providing a low-maintenance outdoor area that still feels inviting and usable.

This is a solid, easy-care home in a well-established area, offering comfort, convenience, and flexibility in equal measure.

DISCLAIMER: While Elders Real Estate Burnie has taken every care to verify the accuracy of the details in this advertisement, we cannot guarantee its correctness. Prospective buyers or tenants need to take such action as is necessary, to satisfy themselves of any pertinent matters

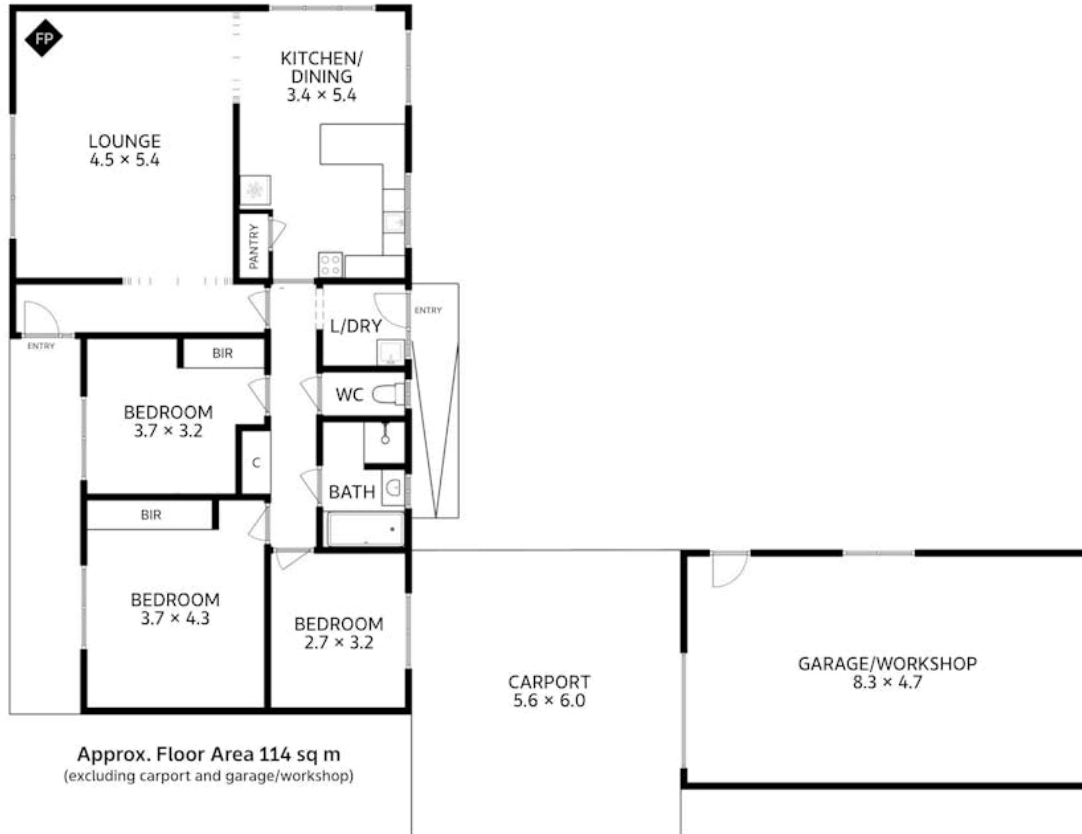
- Land Area 812.00 square metres
- Building Area: 114.00 square metres
- Bedrooms: 3
- Bathrooms: 1
- Car Parks: 2
- Single garage
- Single carport







13 Acacia Drive
Romaine



All measurements are internal and approximate.
This plan is a sketch for illustration, not valuation.

