



58 E Gibbons Road, HAMILTON, VIC 3300

Peaceful Country Living on 10 Beautiful Acres

Set amidst 10 picturesque acres on Hamilton's sought-after northern outskirts, this solid 1980's brick veneer home offers the perfect blend of space, comfort, and rural charm just a short walk from the popular Parklands Golf Club.

Surrounded by scattered gum trees, the property provides a tranquil lifestyle ideal for families, hobby farmers, or those simply seeking room to move.

The home itself is warm and welcoming, featuring three well-sized bedrooms plus a versatile rumpus room that can easily serve as a study or fourth bedroom, and comfortable lounge as the heart of the home, complete with a cosy wood heater, split system air conditioning, and with external shutters to the windows for year 'round comfort.

Outside, the appeal continues with expansive yard and established garden offering endless possibilities, along with ample shedding perfect for storage, workshops, or accommodating vehicles and equipment.

Enjoy the best of both worlds with peaceful rural living while remaining conveniently

The particulars contained herein are supplied for information only and shall not be taken as a representation in any respect on the part of the vendor or its agent. Interested parties should contact the nominated person or office for full and current details.

TYPE: For Sale

INTERNET ID: 300P194826

SALE DETAILS

\$670,000

CONTACT DETAILS

Hamilton

89 Gray Street
Hamilton, VIC
03 5551 6600

Dion McFarlane
0428 598 354

close to town amenities, schools, and recreation.

Key Features:

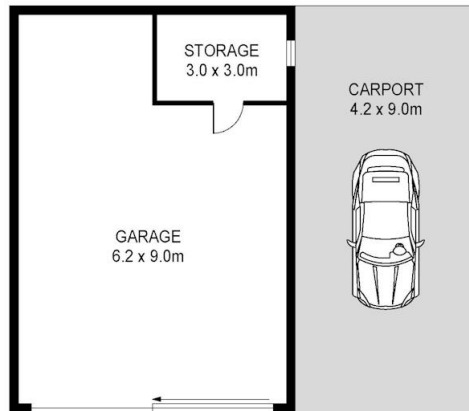
- Solid 1980's brick veneer home on approx. 10 acres
- Three bedrooms plus rumpus/study or optional fourth bedroom
- Comfortable lounge with wood heater and split system air conditioning
- Functional kitchen and family living spaces
- Scattered gum trees creating a picturesque rural setting
- Plenty of shedding for storage, machinery, or workshop use
- Ideal for lifestyle buyers, hobby farming, or families
- Located on Hamilton's northern outskirts, close to Parklands Golf Club

A fantastic lifestyle opportunity offering space, serenity, and potential in a highly desirable location.

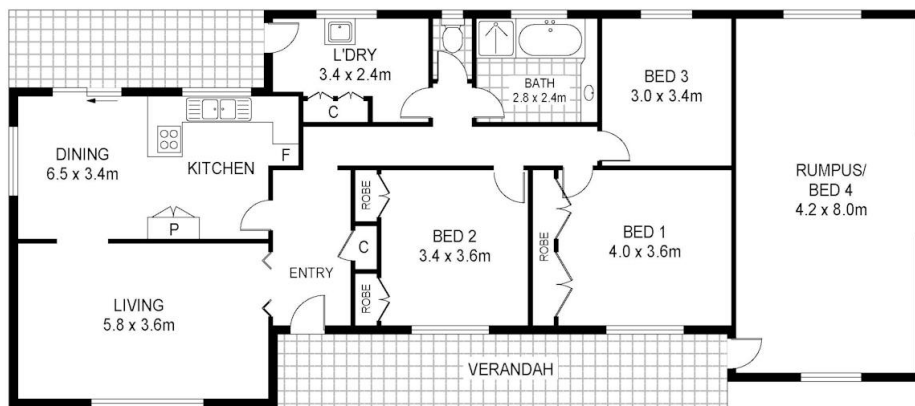
- Land Area 4.06 hectares
- Bedrooms: 3
- Bathrooms: 1
- Double garage







NOT IN ACTUAL LOCATION



Scale in metres indicative only. Dimensions are approximate. All information contained herein is gathered from sources we believe to be reliable. However we cannot guarantee its accuracy and interested persons should rely on their own enquiries

58E Gibbons Road, Hamilton