

43 Lismore Road, ALSTONVILLE, NSW 2477

Historic Village Charm on Half-Acre Block

Set on a generous half-acre parcel just moments from the village centre, this early 1900s cottage presents a rare opportunity to secure a piece of local history with the foundations for something truly special. Offering an abundance of space to work with both inside and out, opportunities to create a standout family home or lifestyle retreat like this are exceptionally rare.

The existing residence retains its timeless charm, with period features, high ceilings and polished timber floors creating warmth and authenticity throughout. Light-filled interiors and a flexible layout offer immediate comfort, while inviting a considered renovation or extension to unlock the home's full potential.

With size on your side, there's real scope to create something incredible - whether it's designing a dream outdoor entertaining area, adding a pool, substantial shedding, or exploring a secondary dwelling (STCA). It's a rare chance to shape a property exactly to your vision, all within walking distance of Alstonville's vibrant village hub and must be seen to be truly appreciated.

Property highlights:

The particulars contained herein are supplied for information only and shall not be taken as a representation in any respect on the part of the vendor or its agent. Interested parties should contact the nominated person or office for full and current details.

TYPE: Auction

INTERNET ID: 300P194844

AUCTION DETAILS

12:00pm, Saturday June 13th, 2026

CONTACT DETAILS

**Elders Real Estate
Alstonville**

80 Main Street
Alstonville, NSW
(02) 6628 0000

Jack Oates
0429 533 940

- Classic early 1900s cottage with retained character features and French doors
- Light-filled interiors with high ceilings and polished timber flooring
- Separate lounge and dining zones with original fireplace and mantel
- Updated gas kitchen with meals area and ample storage
- Four bedrooms, including a spacious master, plus dedicated study
- Traditional front verandah and expansive rear deck for entertaining
- Cleared half-acre block offering exceptional space and flexibility
- Outstanding scope to extend, add a pool, shed or secondary dwelling (STCA)
- Schools, parks, shops, cafes and pub all within a 15 minute walk
- Approximately 20 minute drive to Lismore and 25 minutes to Ballina Byron Gateway Airport and beaches

A rare blend of heritage charm, land size and boundless potential - this is an opportunity to create a family haven that truly reflects an idyllic village lifestyle.

Offers are invited prior to auction and building and pest reports are available on request, so contact Jack Oates from Elders Alstonville today for more information and to arrange your inspection.

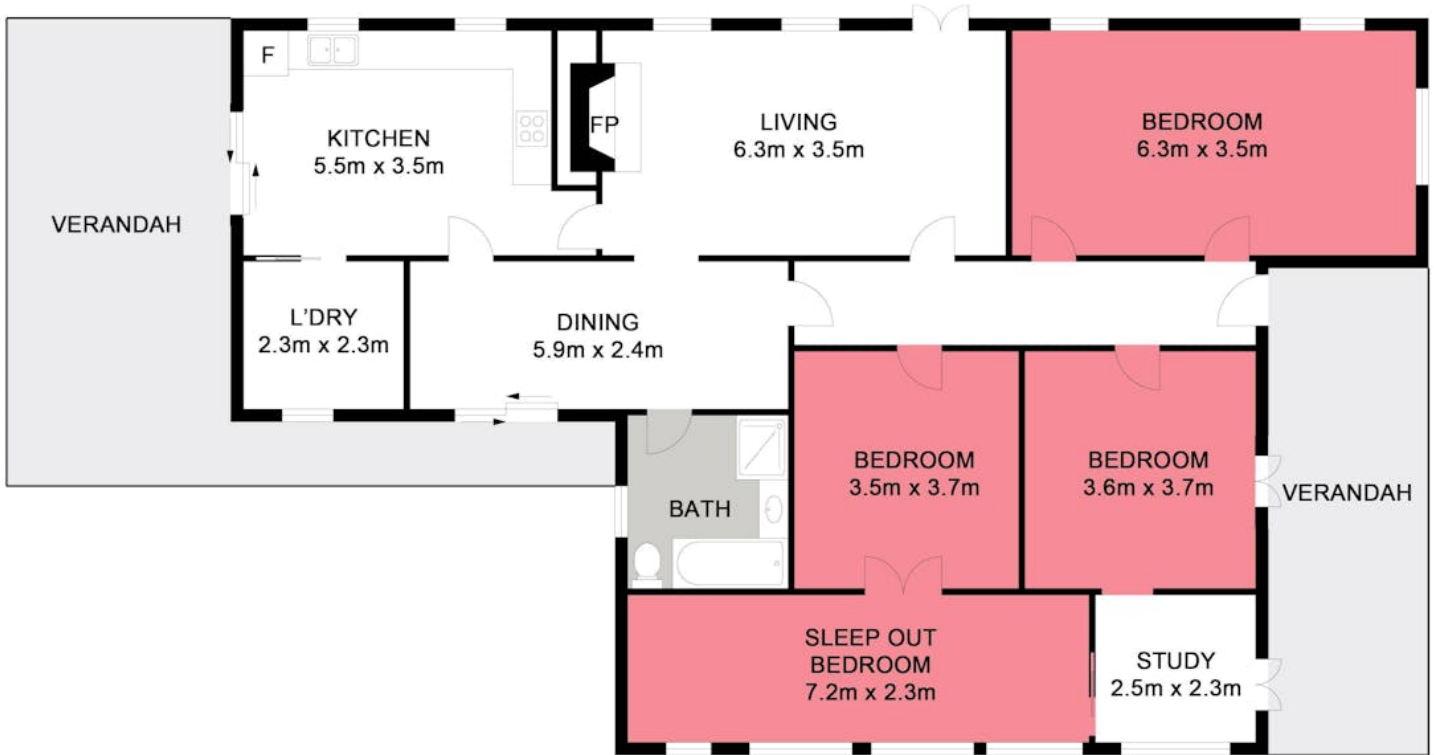
*Walking and driving times as per Google Maps

- Land Area 2,304.00 square metres
- Bedrooms: 4
- Bathrooms: 1









43 Lismore Rd, ALSTONVILLE

Floor Plan Disclaimer: See Hive Studios floor plans / site plans are intended as an approximate guide only. No representations or warranties of any nature are given or intended and any person using this information other than as a guide should always rely on their own enquiries. See Hive Studios property marketing services / Photography, Floor plans, Video, Aerial photography / <https://beehivestudios.com.au>



APPROXIMATE AREAS

INTERNAL FLOOR SPACE - 146m²

EXTERNAL FLOOR SPACE - 49m²