



## 978 Ridgley Highway, RIDGLEY, TAS 7321

### Beautiful Family Home Offering Space, Style & Comfort

Perfectly positioned in the heart of the popular township of Ridgley stands this immaculately presented 4 Bedroom, 2 Bathroom home that will deliver the best of relaxed living with all the space and comfort a modern family needs.

Set on a near level approx 873m2 block this 1987 built brick home is thoughtfully designed across 2 levels with access via a large enclosed entry into a fantastic open planned living area that includes a brilliant kitchen with excellent appliances, dining area space and restful family room complemented with wood heating.

The spacious master bedroom features a private en- suite and great built-ins with large windows framing the surrounding countryside.

Two additional bedrooms also have built -in wardrobes with the lovely main bathroom and large laundry opposite. Upstairs is the perfect kids retreat, second living room or office plus the 4th bedroom.

For those needing room for vehicles, hobbies, or storage this property is perfect for tradies, tinkers or for setting up a home gym plus a private undercover entertaining deck where family and friends can relax while enjoying a BBQ . The block itself

The particulars contained herein are supplied for information only and shall not be taken as a representation in any respect on the part of the vendor or its agent. Interested parties should contact the nominated person or office for full and current details.

**TYPE:** For Sale

**INTERNET ID:** 300P195007

**SALE DETAILS**

**Offers Over \$675,000**

**CONTACT DETAILS**

**Elders Real Estate Burnie**

72-74 Wilson Street

Burnie, TAS

03 6432 2311

**Bruce Jubb**

0417987828

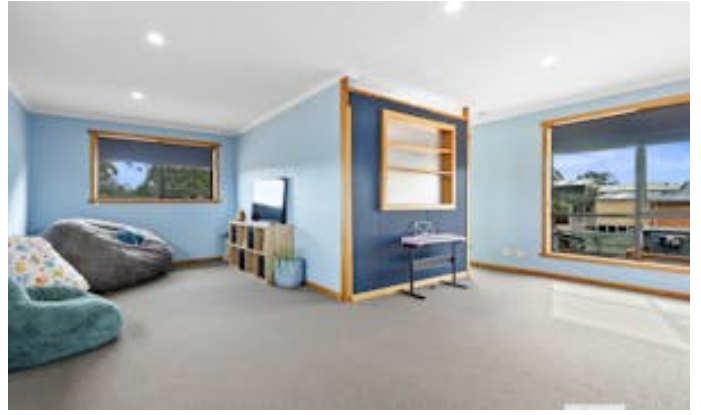
is low maintenances, securely fenced, offering lots of space for children, pets or future landscaping potential.

Being only a short walk to popular Ridgley Primary School, local upmarket and service station this property is ready to welcome you home.

**DISCLAIMER:** While Elders Real Estate Burnie has taken every care to verify the accuracy of the details in this advertisement, we cannot guarantee its correctness. Prospective buyers or tenants need to take such action as is necessary, to satisfy themselves of any pertinent matters

- Land Area 873.00 square metres
- Building Area: 210.00 square metres
- Bedrooms: 4
- Bathrooms: 2
- Car Parks: 2
- Double garage
- Single carport

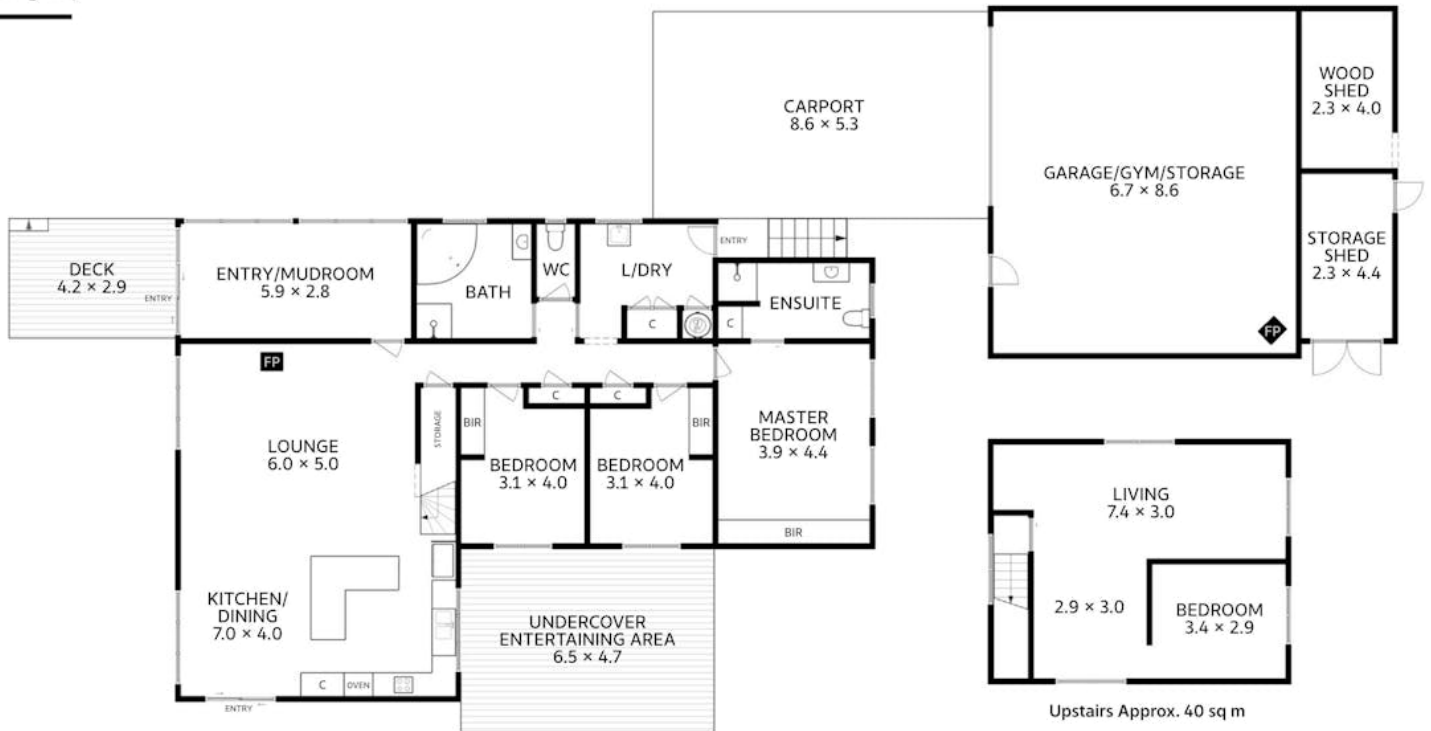








978 Ridgley Hwy  
Ridgley



Downstairs Approx. 170 sq m

Upstairs Approx. 40 sq m

Approx. Total Floor Area 210 sq m  
(excluding deck, undercover entertaining area, carport and sheds)

All measurements are internal and approximate.  
This plan is a sketch for illustration, not valuation.

