



134 Bellicourt Road, DUNKELD, VIC 3294

Family Home on Four Acres In Dunkeld

Ideally located close to the town centre and sporting facilities, this modern three-bedroom brick home, set on approximately four acres, offers space, mountain views and a lifestyle many aspire to. It presents a fantastic opportunity for families seeking both comfort and room to grow.

The front entrance leads you to all zones of the home, the spacious formal lounge is to the left opening up into the dining and kitchen, all with stunning mountain views. This central living zone is kept comfortable year-round with a freestanding wood heater and split system air conditioning.

The kitchen is both stylish and functional, offering ample bench and cupboard space, an island bench ideal for casual meals, and a butler's pantry that keeps appliances neatly tucked away. Additional features include a dishwasher and electric cooking.

The master bedroom is generously sized, complete with a large walk-in robe and ensuite featuring a shower, vanity and enclosed toilet. A sliding glass door provides direct access to the rear outdoor entertaining area. The remaining two bedrooms are positioned nearby, both fitted with built-in robes.

The family bathroom is well appointed with a bath, shower and vanity, complemented by a separate toilet. The laundry offers good storage and internal access to the attached double garage with electric roller door, along with convenient rear access to

TYPE: For Sale

INTERNET ID: 300P195042

SALE DETAILS

\$840,000

CONTACT DETAILS

Hamilton

89 Gray Street
Hamilton, VIC
03 5551 6600

Jo Frost

0428 585 434

the backyard.

Outdoors, the impressive 15m x 8m shed includes two roller doors and a workshop space with wood heating-ideal for tradies or hobbyists. The property is well serviced with a 110,000-litre water tank, town water connection and solar panels to help reduce energy costs.

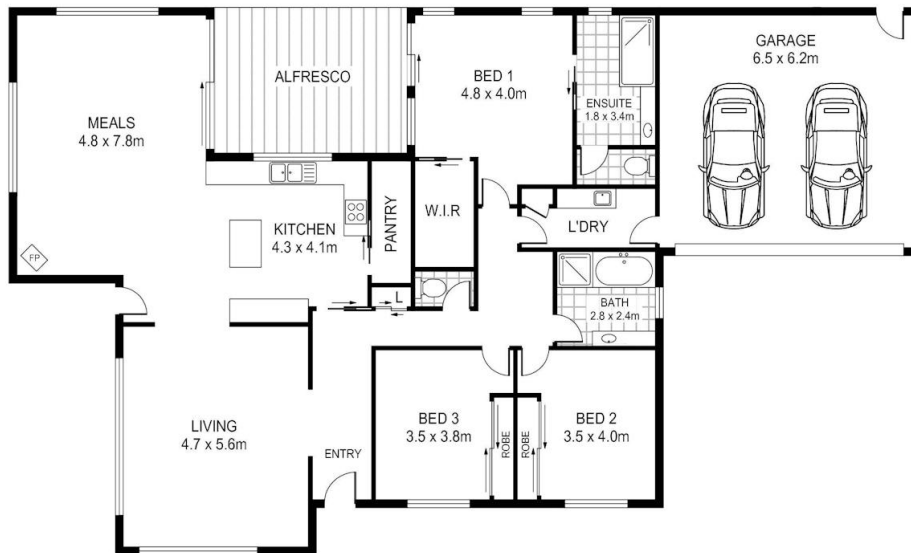
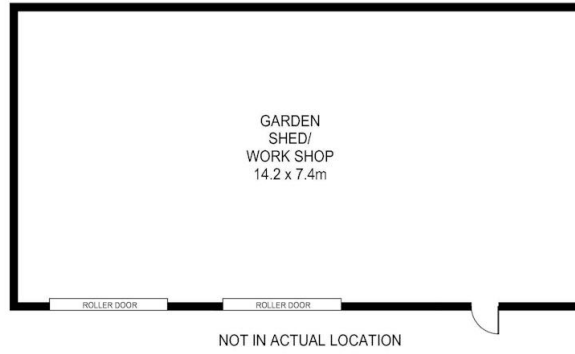
Dunkeld has everything to offer while still maintaining a relaxed, country atmosphere and this locally built home has scope to make it your own and enjoy the scenic surrounds the area has become renowned for. Arrange your inspection today and experience it for yourself.

- Land Area 1.6 hectares
- Building Area: 3.00 square metres
- Bedrooms: 3
- Bathrooms: 2
- Car Parks: 4
- Double garage
- Ensuite
- Floorboards









Scale in metres. Indicative only. Dimensions are approximate. All information contained herein is gathered from sources we believe to be reliable. However we cannot guarantee its accuracy and interested persons should rely on their own enquiries

134 Bellicourt Road, Dunkeld