

1 Dawn Street, WHYALLA STUART, SA 5608

THE PERFECT BLEND OF STYLE, COMFORT & CONVENIENCE

Allotment size: 300m²

Council rates: \$2,475.51 per annum

Water supply & sewer rates: approx \$165 per quarter

Year built: 2019

Zoned: General neighbourhood

Rental appraisal: Available upon request

Positioned in a convenient Whyalla Stuart location, this modern 2019-built home presents an outstanding opportunity for investors, first home buyers, or those seeking to downsize in comfort and style. Designed for easy, low-maintenance living, the home combines contemporary finishes with everyday practicality, making it ideal for today's busy lifestyle. Enjoy the convenience of being within walking distance of the main shopping precinct and Our Lady's Primary School, with essential amenities close at hand. A fantastic chance to secure a quality home in a well-connected location.

TYPE: For Sale

INTERNET ID: 300P195070

SALE DETAILS

\$439,000

CONTACT DETAILS

Elders Real Estate - Whyalla

2 Patterson Street

Whyalla, SA

08 8644 4600

RLA: 62833

Jake Pope

0437 829 177

Welcoming entry hallway leading to the spacious open plan living area at the rear of the home

Modern kitchen featuring a gas cooktop, dishwasher, and ample pantry storage

Light filled living and dining area with sliding door access to the rear yard

Additional centrally located lounge with sliding door access to an outdoor nook, the perfect spot to enjoy your morning coffee in the sun

Three comfortable carpeted bedrooms

Master bedroom complete with a walk-in robe and private ensuite

Main bathroom featuring a powder room, separate bath, walk-in shower, and separate toilet

Tiled laundry with built-in storage and convenient external access

Ducted reverse cycle air-conditioning throughout for year round comfort

Front roller shutter providing added privacy and security

Quality energy efficient, honeycomb light blocking blinds fitted throughout the home

Landscaped, low maintenance yards for easy care living

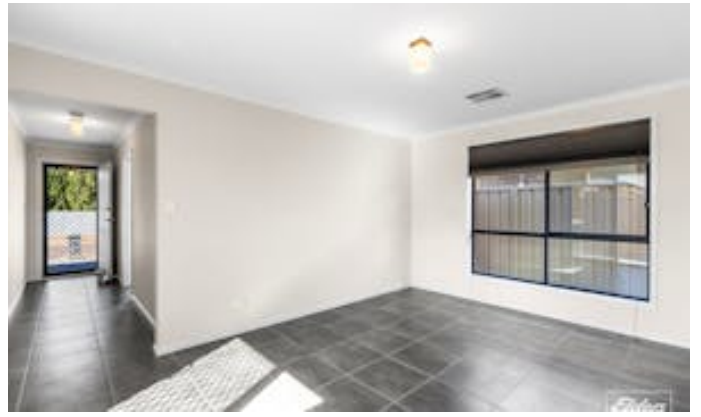
Single garage with roller door, offering both internal and external access

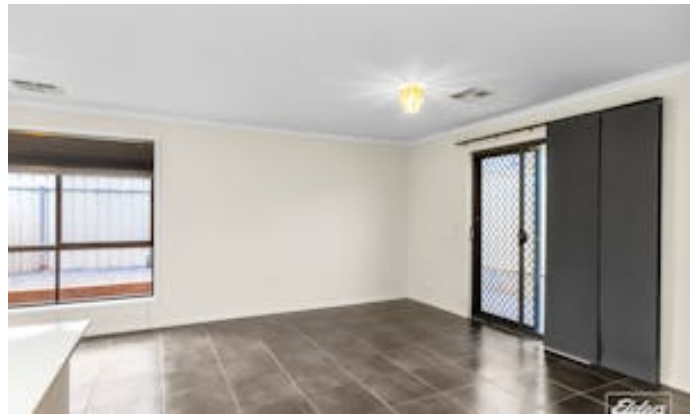
6.6kw solar system

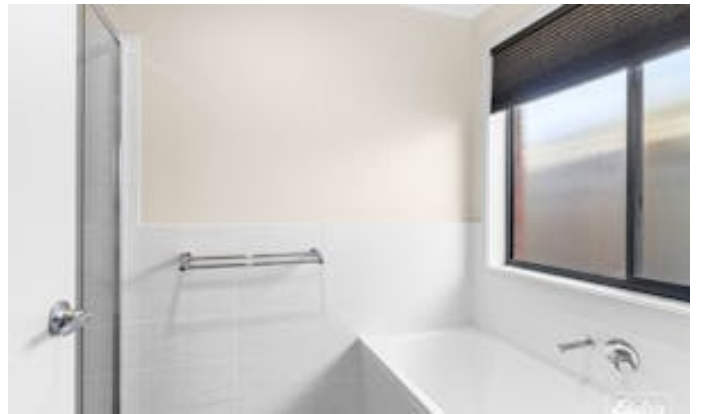
Security camera system

Disclaimer: We have in preparing this information used our best endeavours to ensure that the information contained herein is true and accurate but accept no responsibility and disclaim all liability in respect of any errors, omissions, inaccuracies, or misstatements that may occur. Prospective purchasers should make their own enquiries to verify the information contained herein. Elders Real Estate RLA62833

- Land Area 300.00 square metres
- Bedrooms: 3
- Bathrooms: 2
- Single garage









casalty