



13 Hyde Court, LOWER KING, WA 6330

Deluxe Country Lifestyle Package Comes with the Lot

With a luxurious modern home, tranquil picturesque gardens, great shed space, and paddocks for a few animals or for the kids to run rampant, this stunning property offers a magnificent private lifestyle perfect for families and professionals, or as a one-stop top spot to retire off the farm.

Located in tightly held Syringa Park, this beauty provides exceptional access to local waterways and boat ramp, is just a couple of minutes drive to Great Southern Grammar, and just over ten minutes drive to thriving Albany.

The home itself includes a sumptuous master with light filled ensuite in classic style, family bedrooms both with ensuites, and stunning and practical living areas. A large lounge with vaulted ceiling links with open-plan luxury kitchen and spacious dining, and these in turn flow to fabulous outdoor entertaining areas on the north and south sides of the home. Perfect for hosting indoor-outdoor entertainment, these are equally suitable for a quiet breakfast on the deck while you watch birds in the garden.

Delightful landscaped gardens surround the home offering privacy and a haven of relaxation, beyond which the grounds are divided into paddocks currently set up for horses but suitable for any stock. Generous enclosed and open sheds provide ample

TYPE: For Sale

INTERNET ID: 300P195144

SALE DETAILS

Offers above
\$1,450,000

CONTACT DETAILS

Albany Real Estate
189 Chester Pass Road
ALBANY, WA
08 9842 7900

Blair Scott
0459 024 026

room for workshop space and vehicle storage. Everything you want and need is here!

This brilliant property is a haven of peace and seclusion, a brilliant home and overall property, unlocking the magical beaches, coastline, and lifestyle the Great Southern is famous for.

- Terrific lifestyle opportunity, beautiful home, great sheds, lovely gardens, paddocks
- Tightly held development offering leafy privacy and lovely country setting
- Perfect for family with ample living space - fabulous lounge and open living
- Modern well-appointed kitchen, big island bench, dishwasher, range-style stove
- A dream entertainers courtyard and private deck both linking seamlessly with kitchen and dining for epic inside-outside get-togethers
- King size ensuite with plantation shutters and garden view, an amazing place to wake up
- Beautiful light and bright ensuite with walk-in shower and indulgent clawfoot bath
- Huge family bedrooms both with ensuites and direct external access if desired, ideal for guests or growing kids
- Delightful private gardens around the home with veggie beds, fruit trees, and netted orchard
- Expansive enclosed and open shed space for workshop, vehicle storage etc.
- Several paddocks for stock or kids, large chook run
- Excellent access to rivers and boat ramp, Grammar just up road, close to beautiful beaches

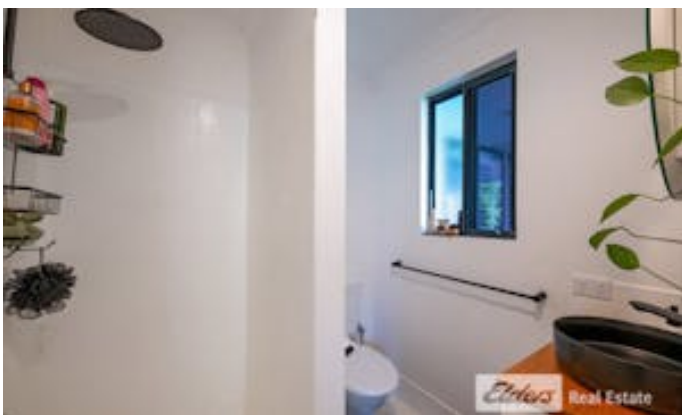
This tremendous property offers everything you want and need in a lifestyle property, in an outstanding location.

For your private inspection or more information please contact Blair Scott on 0459 024 026.

- Land Area 1.0086 hectares
- Building Area: 198.00 square metres
- Bedrooms: 3
- Bathrooms: 3
- Car Parks: 1
- 4 car garage
- Ensuite
- Floorboards









Elders Real Estate

FLOOR PLAN

This floor plan including furniture, fixture measurements and dimensions are approximate and for illustrative purposes only. BoxBrownie.com gives no guarantee, warranty or representation as to the accuracy and layout. All enquiries must be directed to the agent, vendor or party representing this floor plan.

13 Hyde Court, Lower King