

55 Cornwallis Circuit, GRAY, NT 0830

SOLID ELEVATED! MOVE IN READY.

Classic elevated design, set on a generous block in a well-established suburb. Freshly painted inside with polished hardwood floors throughout, the home offers clean, comfortable living from day one.

The kitchen and bathroom remain original completely functional as is, with clear scope to update and add value over time. Downstairs provides the flexibility elevated homes are known for, with space for parking, storage or future plans.

Key Features:

- Three-large bedrooms with robes
- Large front balcony
- Fresh internal paint throughout with neutral warm white
- Polished hardwood timber floors
- Large block with full six-foot fencing

TYPE: For Sale

INTERNET ID: 300P195358

SALE DETAILS

PRICE GUIDE
\$570,000

CONTACT DETAILS

Darwin
70 Smith Street
DARWIN, NT
08 8946 0500

Colin Morrow
0468 954 318

- Classic, proven layout for the area
- Undercover parking for up to 4 vehicles

The first open homes will be held on both Saturday and Sunday the 2nd and 3rd May 2026 from 1pm to 2pm. The property will not be sold prior to these initial inspections, ensuring all interested buyers have the opportunity to attend and make an informed decision.

I look forward to welcoming you.

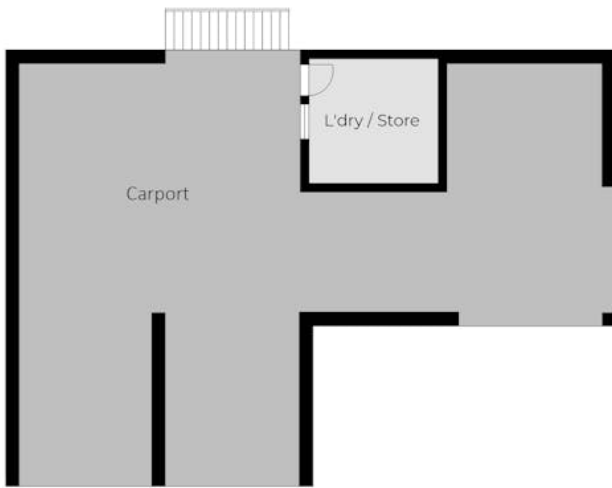
Other features: Close to Schools, Close to Shops, Close to Transport

- Land Area 793.00 square metres
- Building Area: 106.00 square metres
- Bedrooms: 3
- Bathrooms: 1
- Car Parks: 2
- Floorboards









Ground Floor



First Floor

55 Cornwallis Cct, GRAY NT 0830

Sizes and dimensions are approximate. Actual may vary.
Skelton Studio

