



7 Gale Street, WHYALLA JENKINS, SA 5609

A SMART START IN OCEAN EYRE ESTATE

Allotment size: 310m²

Council rates: \$2,360.81 per annum

Water supply & sewer rates: approx \$165 per quarter

Year built: 2015

Zoned: General neighbourhood

Rental appraisal: Available upon request

Occupancy: Vacant

Located in the highly sought-after Ocean Eyre Estate, 7 Gale Street, Whyalla Jenkins presents an outstanding opportunity for first home buyers, families, or savvy investors seeking a quality home in a thriving community. Surrounded by modern homes and a friendly neighbourhood atmosphere, this desirable location offers the perfect blend of comfort, convenience, and lifestyle. Enjoy easy access to Ocean Eyre Park, perfect for weekend strolls with the kids or family pet, while Jubilee Park, schools, shopping, and everyday amenities are all just minutes away. Whether you're looking to step into the

TYPE: For Sale

INTERNET ID: 300P195390

SALE DETAILS

\$439,000

CONTACT DETAILS

Elders Real Estate - Whyalla

2 Patterson Street

Whyalla, SA

08 8644 4600

RLA: 62833

Jake Pope

0437 829 177

property market or expand your investment portfolio, this is an exceptional opportunity to secure a home in one of Whyalla's most popular and family-friendly locations.

Entry to hallway leading down to open plan living located at the rear of the home

Light filled living and dining with sliding door access to alfresco

Modern kitchen with gas cooktop, dishwasher and pantry storage

Three carpeted bedrooms, two complete with built-in robes, master with walk-in robe

Spacious master bedroom featuring a private ensuite

Main bathroom with powder room, separate bath, walk-in shower, separate toilet and built-in storage

Additional built-in hallway storage for added convenience

Blinds installed throughout the home

Ducted air-conditioning throughout for year-round comfort

Concreted alfresco with Colorbond verandah, perfect for entertaining family and friends

Low-maintenance front and rear yards

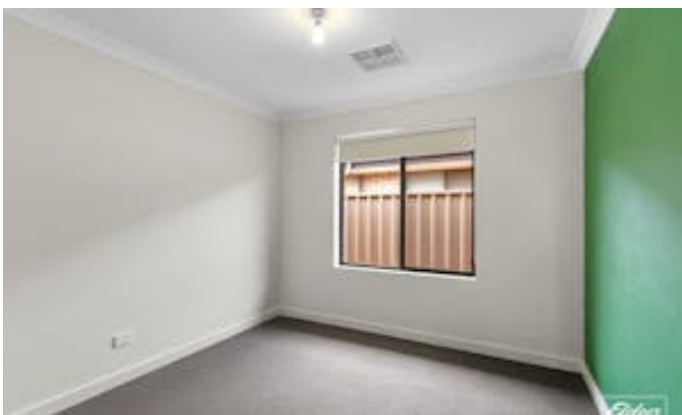
Rainwater tank

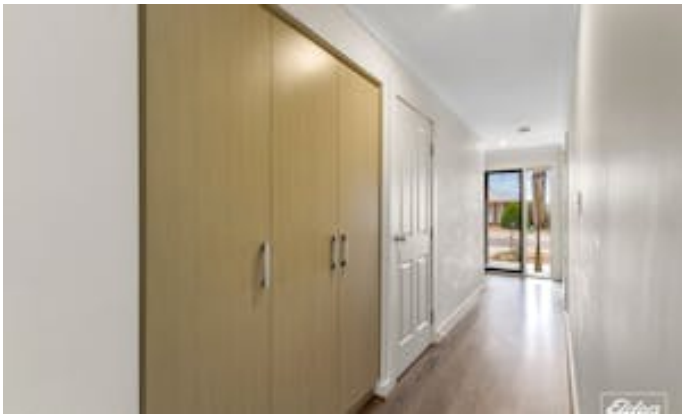
Single garage with roller door, internal and rear access, plus a tiled laundry area

Disclaimer: We have in preparing this information used our best endeavours to ensure that the information contained herein is true and accurate but accept no responsibility and disclaim all liability in respect of any errors, omissions, inaccuracies, or misstatements that may occur. Prospective purchasers should make their own enquiries to verify the information contained herein. Elders Real Estate RLA62833

- Land Area 310.00 square metres
- Bedrooms: 3
- Bathrooms: 2
- Single garage











Living:	116.04sqm
Verandah:	25.16sqm
Garage:	27.64sqm
Porch:	2.80sqm
Total:	171.64sqm

This drawing is for illustration purposes only. All measurements are internal and approximate. Details intended to be relied upon should be independently verified.
Produced by Open2view.com

