



10 Charman Avenue, EUROA, VIC 3666

First Time Offered - A Genuine Mid-Century Original

Held by the one family since construction, this is a genuine mid-century home-untouched in all the right ways and increasingly hard to find.

Inside, the home stays true to its era. A warm central lounge connects through to the original kitchen and dining, where clean lines and functional design deliver both character and practicality. It's a space that can be enjoyed exactly as it is, or elevated over time without losing its soul.

The layout is simple and effective-three bedrooms, central living, kitchen and meals-plus a screened sunroom/back verandah that adds a valuable second living zone. Whether it's a quiet morning space or somewhere to entertain, it works.

Comfort is already taken care of, with plantation shutters, split system heating and cooling, and ceiling fans throughout.

Step outside and the appeal continues. Established gardens, a private setting, and a low-maintenance yard create a space that's easy to enjoy from day one. A double garage, additional shedding, and secure rear access via lockable gates add genuine

The particulars contained herein are supplied for information only and shall not be taken as a representation in any respect on the part of the vendor or its agent. Interested parties should contact the nominated person or office for full and current details.

TYPE: For Sale

INTERNET ID: 300P195453

SALE DETAILS

\$515,000 to \$550,000

CONTACT DETAILS

Euroa

27 Binney Street
EUROA, VIC
03 5795 2294

Donna Abbey
0488 694 807

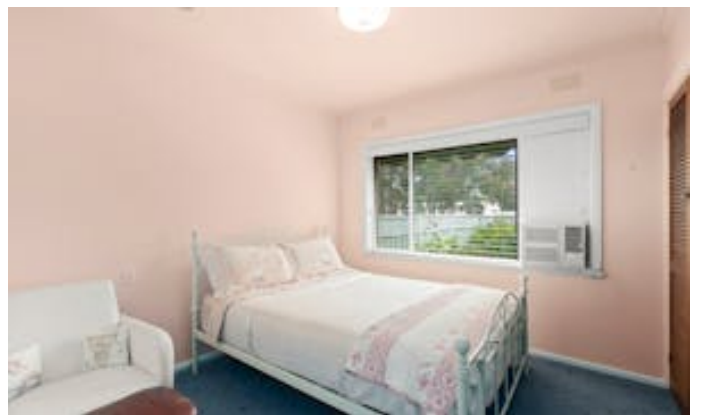
flexibility for vehicles, trailers, or storage-while the fernery brings a touch of greenery that softens the whole setting.

Set in a quiet, well-regarded street, this is a home that will resonate with buyers who value authenticity, as well as those looking for a solid property with clear potential to enhance.

A true original-honest, full of character, and ready for its next chapter.

Other features: Carpeted, Close to Schools, Close to Shops, Close to Transport, Openable Windows

- Land Area 920.00 square metres
- Bedrooms: 3
- Bathrooms: 1
- Car Parks: 1
- Double garage

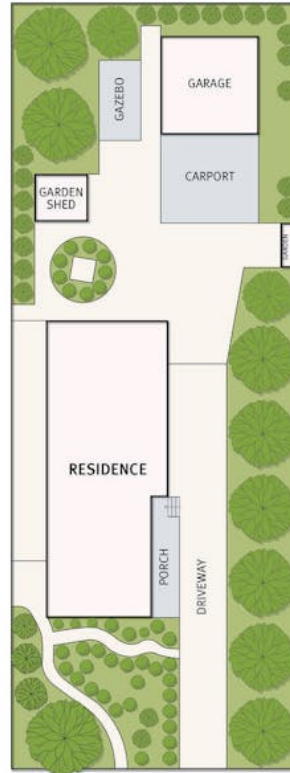








10 Charman Avenue, Euroa



THE ABOVE PLAN IS AN ARTIST'S IMPRESSION ONLY, IT INCLUDES ELEMENTS THAT ARE FOR DISPLAY PURPOSES ONLY AND MAY NOT BE TO SCALE. LANDSCAPING SHOWN IS INDICATIVE ONLY. DIMENSIONS ARE APPROXIMATE.