

8 Caldwell Road, MCMINNS LAGOON, NT 0822

MAGNIFICENT ENTERTAINER IN SENSATIONAL SEMI-RURAL SETTING

Luxuriously appointed and impressively spacious, this breathtaking rural property creates a fabulous family sanctuary on five sweeping acres. Enviably positioned within sought-after McMinns Lagoon, it is peaceful and private, while remaining only a short drive away from the essentials at Coolalinga.

- ï#- Gorgeously landscaped five-acre property in highly desirable semi-rural setting
- ï#- Polished, modern design elevates superbly spacious single level layout
- ï#- Effortless and airy through generous open-plan and flexi second living space
- ï#- Immaculate kitchen boasts quality appliances, dual ovens, built-in coffee machine, walk-in pantry, and stone surface
- ï#- Expansive alfresco entertaining with outdoor kitchen overlooking pool and gardens
- ï#- Master features stackers to verandah, walk-in and luxe ensuite with twin shower
- ï#- Second bedroom with walk-in and ensuite, two bedrooms and study at other side of home

TYPE: For Sale

INTERNET ID: 300P195567

SALE DETAILS

PRICE GUIDE
\$1,925,000

CONTACT DETAILS

Darwin
70 Smith Street
DARWIN, NT
08 8946 0500

Gennie Cox
0411 151 911

i#- Main bathroom with bath, shower, dual vanity, separate WC, adjacent laundry with yard access

i#- All four bathrooms are finished with porcelain tiles to the ceiling, delivering a sleek, luxurious feel throughout.

i#- Additional features inc. solar, ducted and split-system AC, ceiling fans throughout

i#- Four-bay carport, freestanding shed/garage with renovated kitchen, bedroom, bathroom

Exuding effortless appeal, this stunning property delivers an expert blend of space and sophistication, appealing as much to the entertainer as to families seeking space.

Set back from the road, the picture-perfect property creates immediate appeal with a tree-lined driveway, which leads you to the magnificent main residence, where modern, architectural lines deliver on that wow factor.

Just as impressive inside as out, the fantastically spacious layout spans an airy single level, accentuated by high ceilings, abundant natural light and an easy indoor-outdoor flow. With every finish polished, it is further elevated by sleek porcelain tiled floors and elegant neutrals.

At the heart of the home, the inviting open-plan offers a comfortable retreat and seamless interaction with the impeccably presented kitchen. Featuring stone counters and shimmering mosaic tile backsplash, this superb cook space impresses further with a walk-in pantry, waterfall island and quality appliances.

Offering excellent versatility and a natural flow outdoors, there is a separate living space set off to the side, while the open-plan uses bi-fold doors to open interior living to the exceptional rear alfresco. Ready to delight entertainers, this space is just amazing, complete with outdoor kitchen and sweeping views over the inground pool and landscaped gardens.

Just as appealing, the vast master features stacker doors that lead out to this space, offering parents a marvellous retreat, complete with huge walk-in and gorgeous ensuite. The second bedroom also features a walk-in and ensuite, while on the other side of the home, the two remaining bedrooms and study group around the full family bathroom.

Showcasing tasteful, modern design, all of the bathrooms are spotless, as is the large laundry, featuring great built-ins and handy yard access.

Completing this delightful package are features that include, solar, AC, a four-bay carport at the side of the home, and a renovated shed with workshop space, kitchen, bedroom and bathroom.

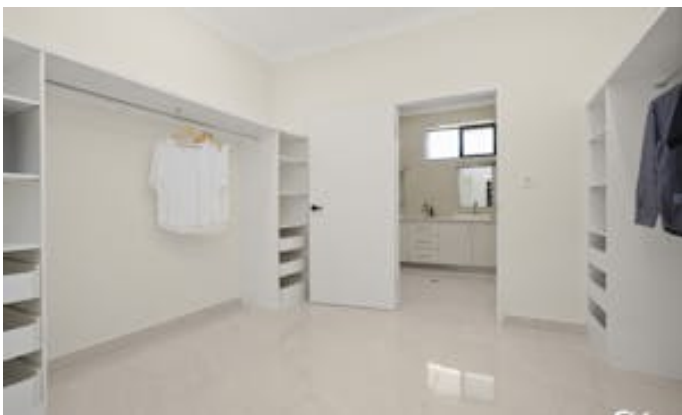
Positioned with reach of schools, shops and services, the property is just over five minutes from Coolalinga Central and less than 15 minutes from Palmerston City.

Quality such as this is rare, so make sure you don't miss out! Call today to secure your inspection.

Other features: Bush Retreat, Close to Schools, Close to Shops, Close to Transport, Prestige Homes

- Land Area 2 hectares
- Building Area: 619.00 square metres
- Bedrooms: 5
- Bathrooms: 4
- Car Parks: 6
- Ensuite











SITE PLAN



8 CALDWELL ROAD, MCMINNS LAGOON

DISCLAIMER:
PLANS SHOWN ARE FOR MARKETING PURPOSES ONLY. ALL DIMENSIONS ARE APPROXIMATE AND NOT TO SCALE. THEY ARE SUBJECT TO ERRORS AND INACCURACIES AND NO LIABILITY WILL BE ACCEPTED. INTERESTED PARTIES SHOULD MAKE THEIR OWN INQUIRIES.