

71 Emery Avenue, WOODROFFE, NT 0830

YOUR NEW HOME AWAITS! **LEASE BREAK**

Welcome to 71 Emery Avenue, a well-presented family home offering comfort, space, and practicality in the heart of Gray. Set on a generous block with established gardens, this property is perfect for those seeking a relaxed lifestyle close to everything Palmerston has to offer.

Inside, you'll find a bright open-plan living and dining area, a functional kitchen with ample storage, and well-sized bedrooms designed for comfort. The home is fully air-conditioned to keep you cool year-round.

Step outside to a spacious yard with plenty of room for kids, pets, or weekend entertaining. With covered parking, secure fencing, and low-maintenance surrounds, this home is designed for easy living.

Located just minutes from schools, parks, shops, and public transport, this property combines convenience with a peaceful suburban feel.

Features include:

The particulars contained herein are supplied for information only and shall not be taken as a representation in any respect on the part of the vendor or its agent. Interested parties should contact the nominated person or office for full and current details.

TYPE: For Rent

INTERNET ID: 300P195658

RENTAL DETAILS

Rent / Lease:

\$600 per week

CONTACT DETAILS

Darwin

70 Smith Street

DARWIN, NT

08 8946 0500

Mia Judd

0477 063 373

- Open plan living and dining area
- Functional kitchen with great storage and electric appliances
- Well sized bedrooms with air conditioning and built in storage
- Large, fully fenced yard
- Undercover parking and entertaining area
- Close to schools, shops, and transport
- Spa located at rear
- Pets on Application
- Available 23/04/2026
- Lease break - \$600 per week until 01/03/2027

A comfortable, well located home like this won't stay available for long.

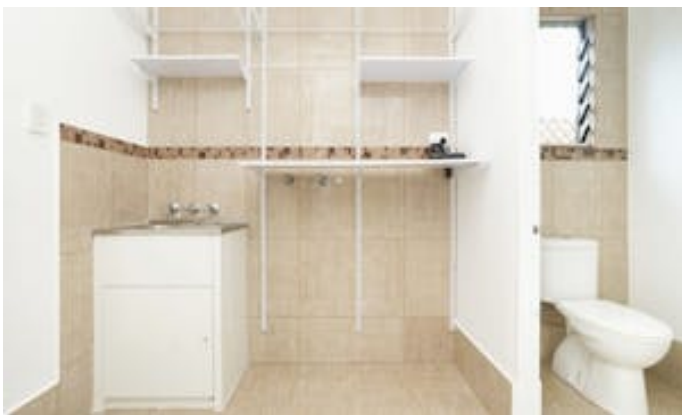
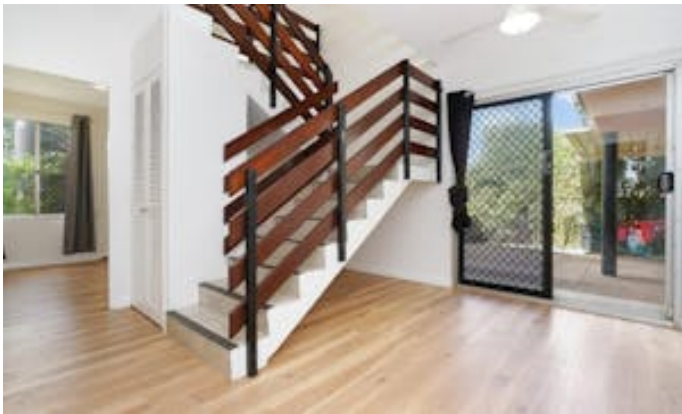
How to apply? A link will be sent via 2Apply once the property has been inspected.

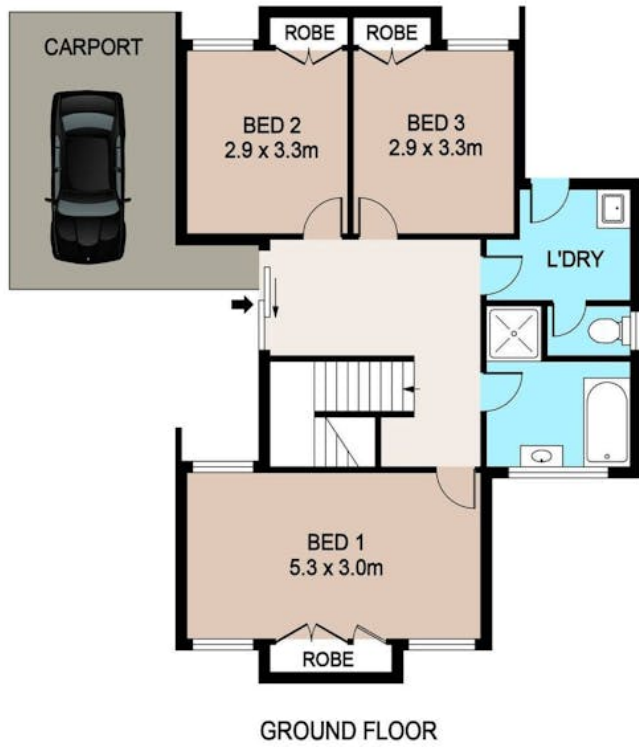
Elders does NOT accept 1FORM applications. Please leave your details to register for the next available inspection.

Other features: Close to Schools, Close to Shops, Close to Transport, Spa

- This property is: Unfurnished
- Pets: No
- Available on: 23/04/26
- Bedrooms: 3
- Bathrooms: 1
- Car Parks: 2







71 EMERY AVE, WOODROFFE

DISCLAIMER

PLANS SHOWN ARE FOR MARKETING PURPOSES ONLY. ALL DIMENSIONS ARE APPROXIMATE AND NOT TO SCALE. THEY ARE SUBJECT TO ERRORS AND INACCURACIES AND NO LIABILITY WILL BE ACCEPTED. INTERESTED PARTIES SHOULD MAKE THEIR OWN INQUIRES.