



6 Woodhouse Crescent, GLOSSOP, SA 5344

Impressive Brick-House on Woodhouse

This stylish brick veneer home is nestled on a generous 994m² parcel of land in the heart of Glossop and within walking distance to the post office, Primary School and service station.

Picturesque gardens welcome you into the home where you will find a formal lounge, dining and family space with the upgraded kitchen boasting wall oven and 5 burner gas cooktop. All three bedrooms have built in robes and the 2 way spacious bathroom has separate bath, shower alcove, vanity and mirror. Great storage in laundry with the bonus of a clothes dryer. Climate control consists of ducted evaporative air conditioner only 3 years old, gas heaters and ceiling fans.

Impressive undercover entertaining area has room for all your friends and family. Carport is fitted with auto lift panel door. The shed is fitted with workbench, shelving, toilet and shower facilities, there is even a lean-to for the caravan or trailer. The well-kept gardens include lush green lawns, designated veggie and fruit garden irrigated with an auto watering system and is accessible by the rear laneway.

This well presented immaculately kept home is sure to tick all the boxes and is ready to welcome its new owners, make sure you put this one on your list to inspect today

Disclaimer: In preparing this information we have used our best endeavours to ensure

The particulars contained herein are supplied for information only and shall not be taken as a representation in any respect on the part of the vendor or its agent. Interested parties should contact the nominated person or office for full and current details.

TYPE: For Sale

INTERNET ID: 300P195663

SALE DETAILS

\$430,000 - \$460,000

CONTACT DETAILS

Elders Riverland

2 East Terrace

LOXTON, SA

8588 6066

RLA: 62833

Karen Nash

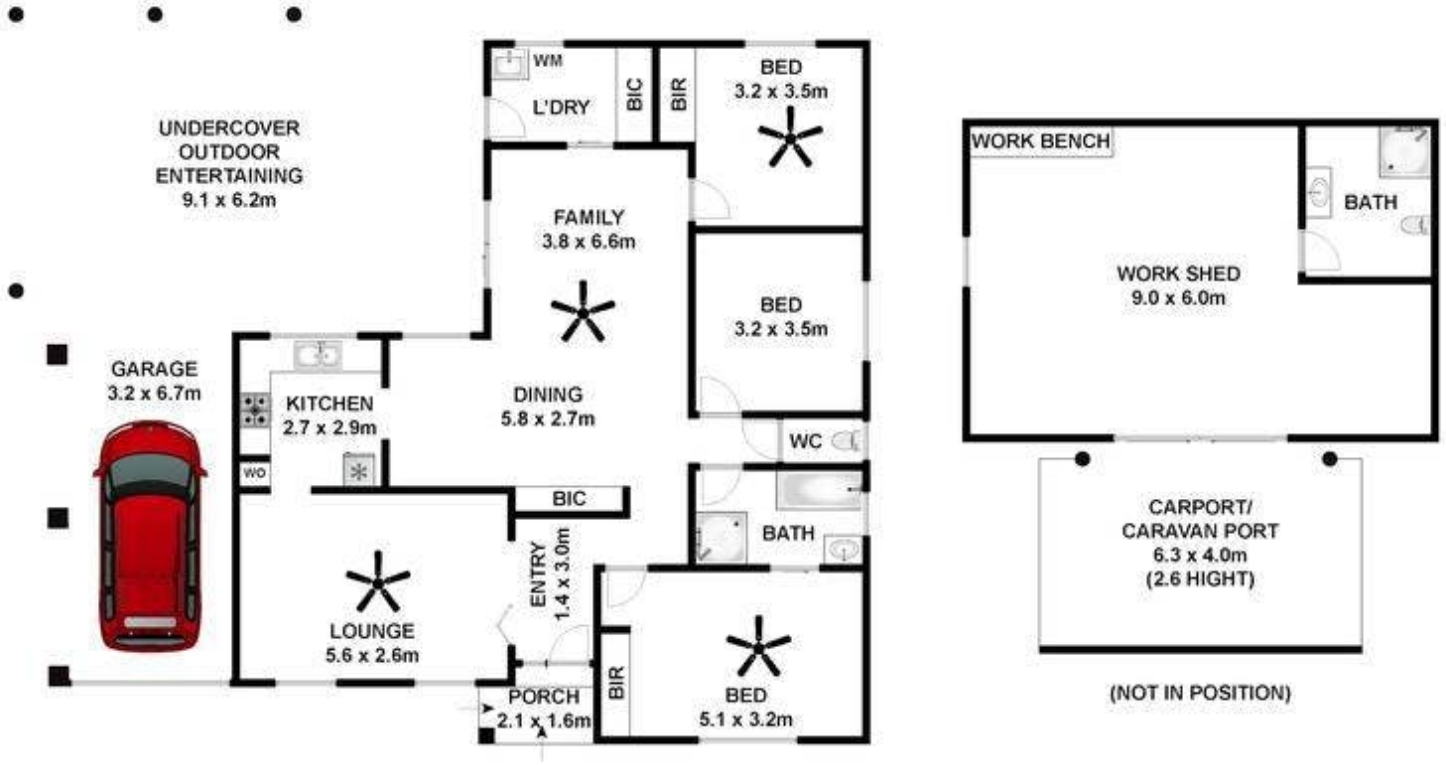
0437 236 669

details contained herein are true and accurate, however we accept no responsibility and disclaim all liability in respect of any errors, omissions or inaccuracies. Prospective purchasers should make their own enquiries to verify the information contained herein.
RLA62833

- Land Area 994.00 square metres
- Bedrooms: 3
- Bathrooms: 2
- Car Parks: 2







Approx House Area 127m²

Whilst bwrn.com.au has made every attempt to ensure the accuracy of the floor plan contained here, measurements are approximate and no responsibility is taken for any error, omission, or mis-statement. This plan is for illustrative purposes only.

6 Woodhouse Crescent, Glossop

