



1 Lambert Court, WHYALLA JENKINS, SA 5609

MODERN LIVING ON A LIFESTYLE ALLOTMENT

Allotment size: 4,022m²

Council rates: \$3,114.76 per annum

Water supply & sewer rates: approx \$165 per quarter

Year built: 2022

Zoned: General neighbourhood

Rental appraisal: Available upon request

Occupancy: Owner occupied

Discover your dream home at 1 Lambert Court, Whyalla Jenkins, boasts' an expansive 4,022m² block offering incredible space and flexibility. Built in 2022, this modern property delivers contemporary comfort while giving you the freedom to truly make it your own. With so much land to work with, the block offers endless potential for hobbies, storage, outdoor living, and more. This is a rare opportunity to secure a lifestyle property with so much to offer, one not to be missed.

TYPE: For Sale

INTERNET ID: 300P195739

SALE DETAILS

\$679,000

CONTACT DETAILS

Elders Real Estate - Whyalla

2 Patterson Street

Whyalla, SA

08 8644 4600

RLA: 62833

Jake Pope

0437 829 177

Welcoming formal lounge currently being used as dining

hallway leading to open-plan living at the rear, with sliding door access to the backyard

Contemporary kitchen featuring a dishwasher, gas cooktop, and spacious breakfast bar with extended height benchtops

Generous walk-in pantry offering ample storage

Floating floorboards throughout (excl bedrooms)

Four well-sized, carpeted bedrooms, three with built-in robes

Master bedroom complete with walk-in robe and private ensuite

Main bathroom includes walk-in shower, separate bath, powder room, and separate toilet

Tiled laundry with abundant built-in storage and direct outdoor access

Ducted reverse cycle air-conditioning throughout the home

Energy-efficient solar system

Large shedding with concrete and power, mezzanine floor and electric roller door

Colorbond perimeter fencing

Gate access to right side of allotment

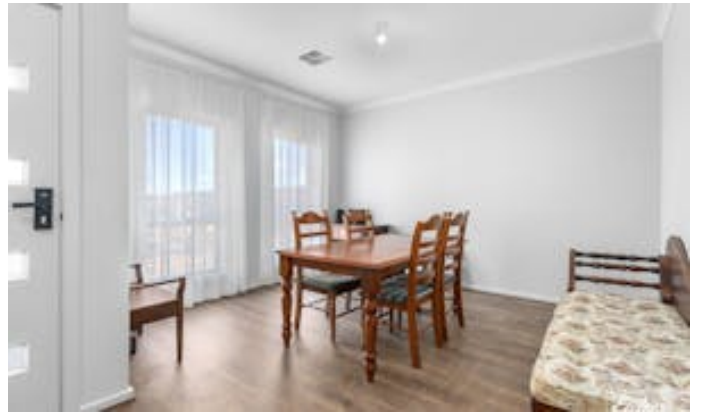
Front yard with "U" shape return driveway and native inspired gardens

Large rear block with 2 huge rainwater tanks, veggie patch, fruit trees and chicken coop and there's still so much more space to develop until your heart is content

Disclaimer: We have in preparing this information used our best endeavours to ensure that the information contained herein is true and accurate but accept no responsibility and disclaim all liability in respect of any errors, omissions, inaccuracies, or misstatements that may occur. Prospective purchasers should make their own enquiries to verify the information contained herein. Elders Real Estate RLA62833

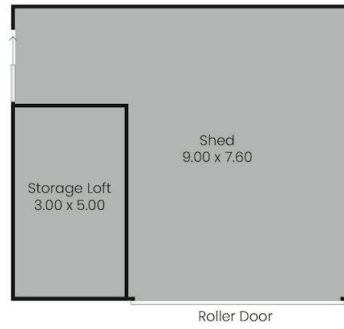
- Land Area 4,022.00 square metres
- Bedrooms: 4
- Bathrooms: 2
- Car Parks: 1
- Single garage











Living:	115.42sqm
Shed:	68.04sqm
Storage Loft:	15.00sqm
Total:	198.46sqm

This drawing is for illustration purposes only. All measurements are internal and approximate. Details intended to be relied upon should be independently verified.
Produced by Open2view.com

