

378 Wheewall Road, BERRY SPRINGS, NT 0838

ENDLESS POSSIBILITY

A well-presented two-bedroom, one-bathroom home set on an expansive 5-acre parcel, offering space, privacy, and an exceptional lifestyle opportunity.

This property combines comfortable living with impressive outdoor potential, making it ideal for those seeking room to breathe while still enjoying practical, modern conveniences.

Inside, the home features a functional and inviting layout with two generously sized bedrooms and a centrally located bathroom designed for everyday ease. The living spaces are thoughtfully arranged to create a natural flow between relaxation and daily living.

A standout feature of the property is the fabulous entertaining area, designed to accommodate gatherings of all sizes. Whether hosting family celebrations, weekend barbecues, or casual get-togethers with friends, this space offers outstanding flexibility and room to enjoy indoor-outdoor living at its best. It serves as the true heart of the home, perfectly suited for entertaining on a grand scale.

TYPE: For Sale

INTERNET ID: 300P195785

SALE DETAILS

PRICE GUIDE
\$749,000

CONTACT DETAILS

Darwin
70 Smith Street
DARWIN, NT
08 8946 0500

Judy Blore
0408 898 551

Outside, the 5-acre allotment delivers endless possibilities. There is ample space for gardens, recreational use, hobby farming, or future enhancements such as sheds, workshops, the possibilities are truly endless. The open land provides both privacy and freedom, allowing you to shape the property to suit your lifestyle.

Combining comfort, scale, and versatility, this property presents a rare opportunity to secure a substantial landholding with a home designed for relaxed living and exceptional entertaining.

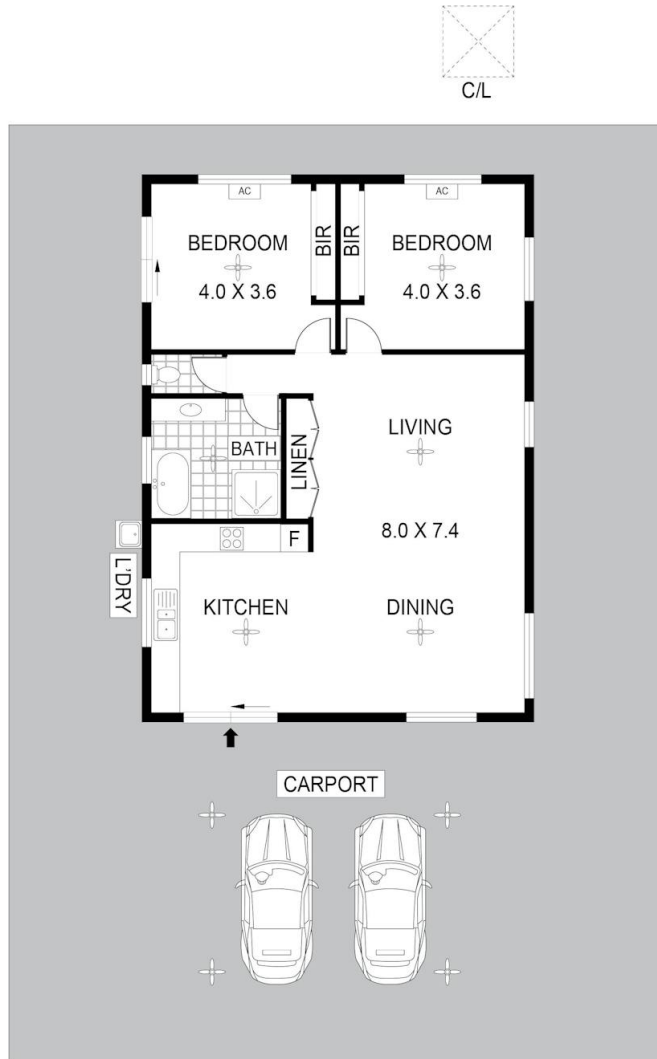
Positioned in a peaceful rural pocket of Berry Springs, the home is approximately 5 minutes from Berry Springs Village amenities including the local tavern, service station, and general store, around 10 minutes from Berry Springs Nature Park and Territory Wildlife Park. Approximately 25â##30 minutes from Palmerston, 45â##55 minutes from Darwin CBD and 40â##45 minutes from Darwin International Airport, offering both seclusion and convenience in equal measure.

- Land Area 2.84 hectares
- Bedrooms: 2
- Bathrooms: 1
- Car Parks: 4









Scale in metres. Indicative only. Dimensions are approximate. All information contained herein is gathered from sources we believe to be reliable. However we cannot guarantee its accuracy and interested persons should rely on their own enquiries

378 Wheewall Road Berry Springs NT 0838