



106 Hensley Park Road, HAMILTON, VIC 3300

Lifestyle Living on Hamilton's Most Sought-After Acreage Address

Set in one of Hamilton's most prestigious lifestyle locations, this exceptional property on approximately 2.62 acres delivers the perfect balance of space, quality and privacy. Positioned within the highly regarded Hensley Park Road precinct, the home enjoys a peaceful setting surrounded by established grounds while remaining only moments from the centre of town.

Designed for comfortable family living, the substantial residence offers four bedrooms, three bathrooms and an impressive sense of scale throughout. Quality craftsmanship and timeless design combine to create a home of enduring appeal, with generous living spaces, excellent natural light and a seamless connection to the surrounding landscape.

Thoughtfully equipped for modern country living, the property features a 13.3kW solar system with a 10kW 3-phase inverter, 3-phase power, a 22,000-litre rainwater tank servicing the gardens, automated backyard sprinklers, two separate double garages, a garden shed and a chicken coop. Families will also appreciate the elevated cubby house with adjoining sandpit, creating the ideal outdoor environment for children to enjoy.

The expansive allotment provides an enviable lifestyle opportunity with vast open space, established trees and endless potential for families seeking room to move, entertain or simply enjoy the tranquillity of this blue-chip address. Rarely does a

TYPE: For Sale

INTERNET ID: 300P195819

SALE DETAILS

\$1,050,000

CONTACT DETAILS

Hamilton

89 Gray Street
Hamilton, VIC
03 5551 6600

Rosi Egerton

0408 199 794

property of this size and calibre become available in such a tightly held and admired location.

A premium lifestyle offering where prestigious position, quality living and exceptional landholding come together to create something truly special.

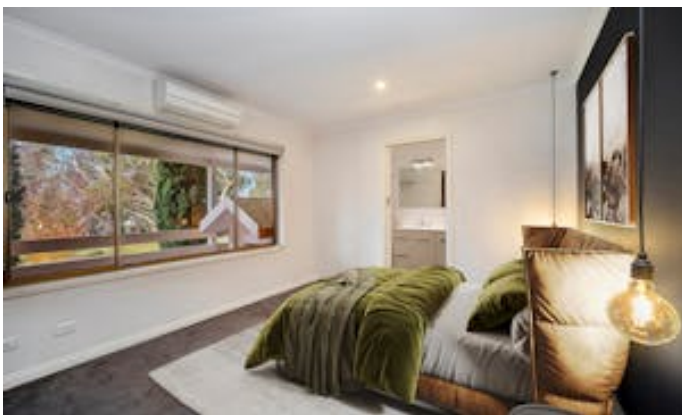
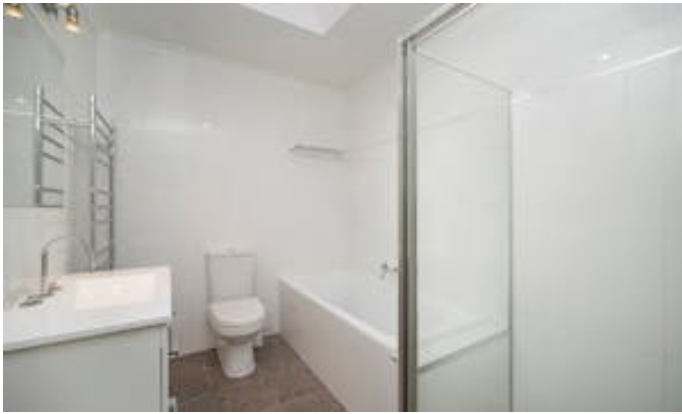
Call Rosi Egerton: 0408 199 794 to inspect today.

Other features: 3 Phase Power, Area Views

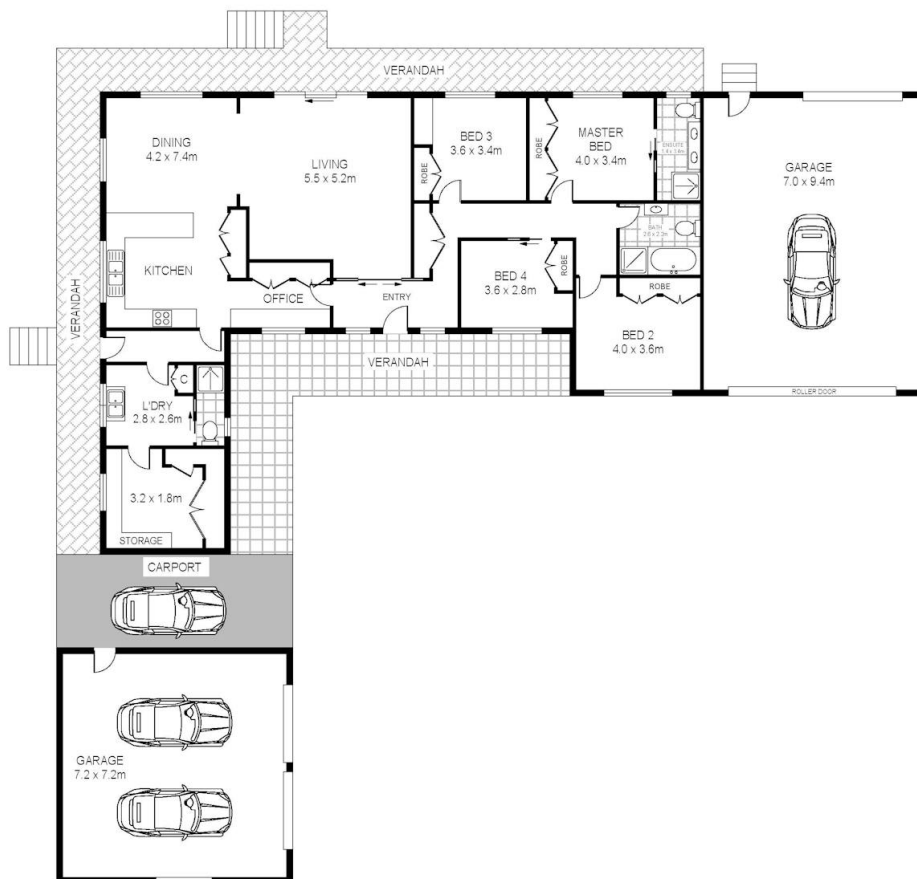
- Land Area 2.62 acres
- Bedrooms: 4
- Bathrooms: 3
- Car Parks: 2
- Double garage
- Single carport
- Ensuite











Scale in metres. Indicative only. Dimensions are approximate. All information contained herein is gathered from sources we believe to be reliable. However we cannot guarantee its accuracy and interested persons should rely on their own enquiries



106 Hensley Park Road, Hamilton