

3 Kenbi Place, ROSEBERY, NT 0832

PRIME INVESTMENT OPPORTUNITY

This well-presented three-bedroom home is set on a generous 709m² allotment. Currently rented for \$700 per week until 17th January 2027, offering strong appeal for both investors and future owner-occupiers. Conveniently located close to schools, parklands, and with an easy commute to the city centre, the lifestyle and location are highly desirable.

Built by Vantage Homes, the property features a functional and modern layout with tiled and fully air-conditioned interiors throughout. The spacious open-plan living area flows seamlessly from the kitchen, which is equipped with electric appliances and excellent storage. French doors extend the living space outdoors to a covered entertaining area, perfect for year-round enjoyment.

The primary bedroom includes a walk-in robe and private ensuite, while bedrooms two and three are fitted with built-in robes. The main bathroom is well-appointed with a bath, separate shower, and vanity.

Outside, the home continues to impress with a large, secure, and low-maintenance yard, established gardens, and shedding for additional storage. A double carport plus side access provides excellent space for a caravan, boat, or extra vehicles.

The particulars contained herein are supplied for information only and shall not be taken as a representation in any respect on the part of the vendor or its agent. Interested parties should contact the nominated person or office for full and current details.

TYPE: For Sale

INTERNET ID: 300P195865

SALE DETAILS

PRICE GUIDE
\$675,000

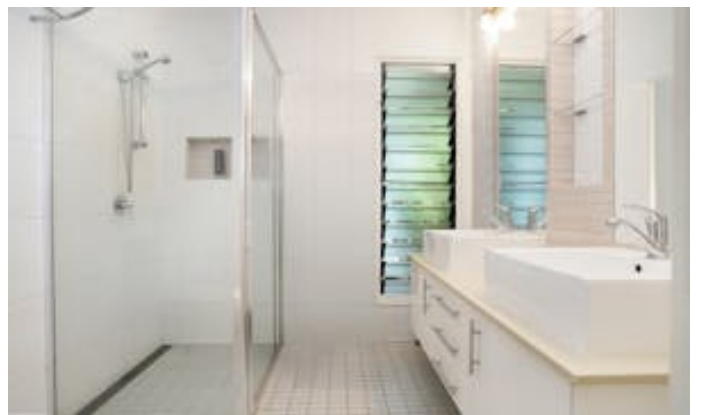
CONTACT DETAILS

Darwin
70 Smith Street
DARWIN, NT
08 8946 0500

Judy Blore
0408 898 551

Other features: Close to Schools, Close to Shops, Close to Transport

- Land Area 709.00 square metres
- Building Area: 197.00 square metres
- Bedrooms: 3
- Bathrooms: 2
- Car Parks: 3
- Ensuite







3 KENBI PLACE, ROSEBERY

PLANS SHOWN ARE FOR MARKETING PURPOSES ONLY. ALL DIMENSIONS ARE APPROXIMATE AND NOT TO SCALE. THEY ARE SUBJECT TO ERRORS AND INACCURACIES AND NO LIABILITY WILL BE ACCEPTED. INTERESTED PARTIES SHOULD MAKE THEIR OWN INQUIRIES.