



50 Perina Way, NORTHAM, WA 6401

Charming Corner Block Opportunity – Updated Home on Spacious 938m² with Endless Potential

Positioned on a generous 938m² corner block, this charming 1955 weatherboard and tile home offers space, comfort, and exciting future potential.

This property is zoned R30 within the Shire of Northam.

Updated internally, the home features a stylish new kitchen, refreshed bathroom, and new flooring throughout, making it move-in ready while still leaving room for the next owners to finish the home off and add their own personal touch.

Inside, you'll find three well-sized bedrooms, one bathroom, and a separate toilet, along with the warmth and character of a slow combustion wood fireplace – perfect for cosy winter evenings.

Outside, the expansive block provides plenty of room for future gardens, pets, children to play, or future improvements. A rear garage with lean-to adds valuable storage and workspace options.

TYPE: For Sale

INTERNET ID: 300P195978

SALE DETAILS

Offers over \$485,000

CONTACT DETAILS

Elders Perth

Level 2, 195 Great Eastern
Highway

BELMONT, WA

08 9422 2444

Sharon Johnson

0418 958 651

Whether you're a first home buyer looking to step into the market or an investor seeking a solid opportunity, this property presents outstanding value in a thriving regional location.

Conveniently located just 77km to Midland and 86km to Perth Airport, Northam offers an exceptional lifestyle with fantastic amenities including hospital services, Coles, Woolworths, Aldi, Bunnings, caf  s, pubs, public and private schools, and the picturesque Avon River.

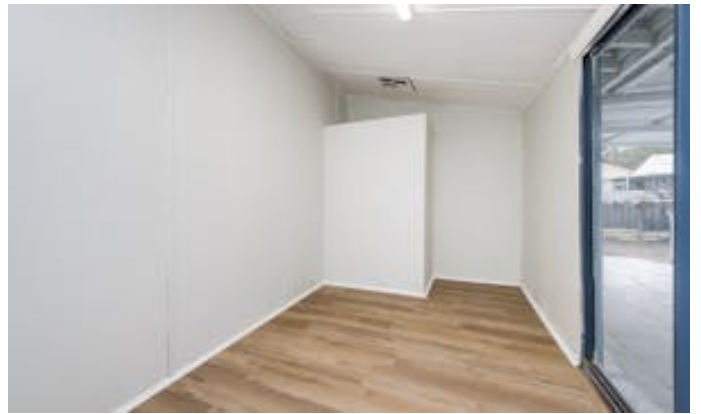
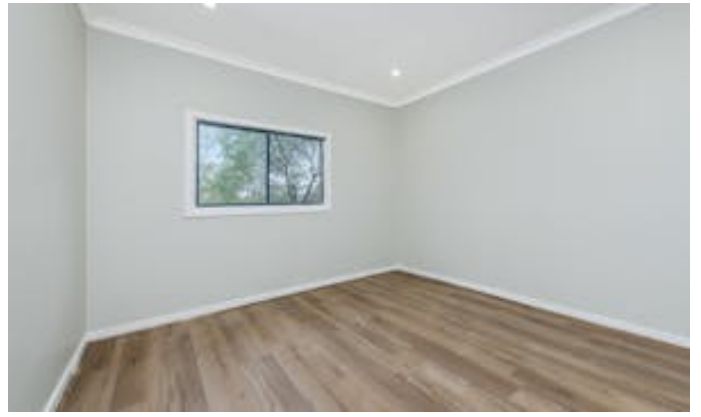
Affordable, updated, and packed with potential â## this is one you won't want to miss.

All inquiries to exclusive selling agents Elders Real Estate

Sharon Johnson | 0418 958 651 | Sharon.Johnson@elders.com.au

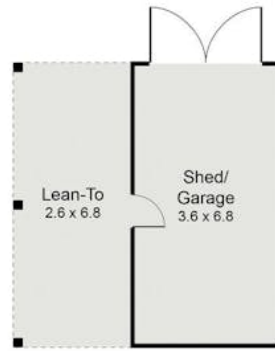
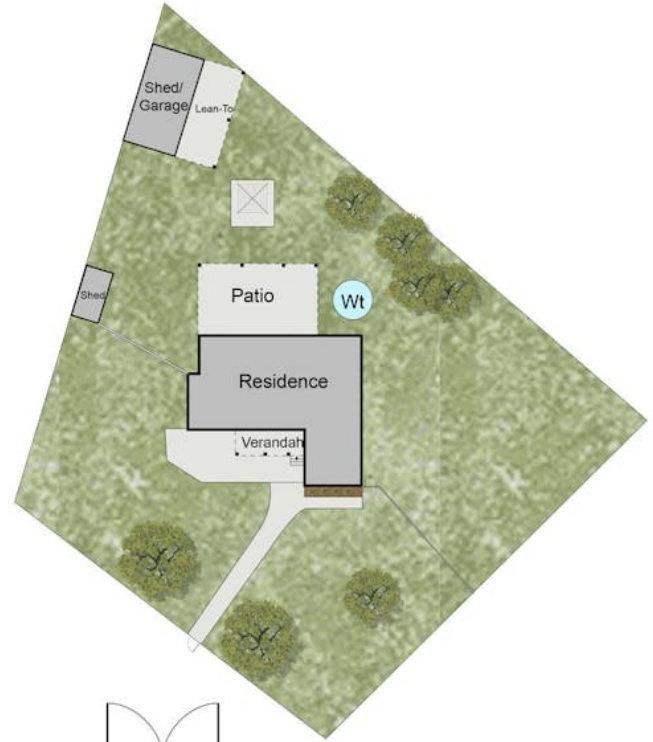
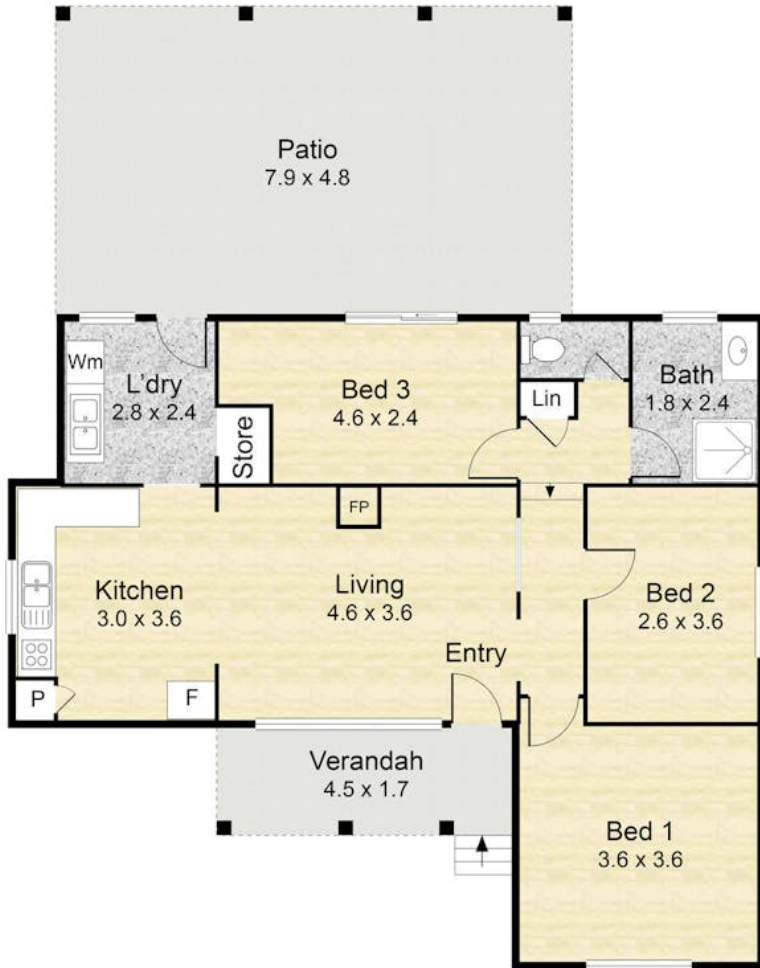
- Land Area 938.00 square metres
- Building Area: 99.00 square metres
- Bedrooms: 3
- Bathrooms: 1
- Car Parks: 2











(Not In Position)



Internal: 88.9 sqm
 External: 87.5 sqm
Total: 176.4 sqm

The site and floorplan are not to scale.
 Dimensions are approximate.