

3 Creek Drive, EUROA, VIC 3666

Tranquil Creekside Living with Space to Entertain

Capture the sights, sounds and serenity of Euroa's natural beauty in this inviting three-bedroom, two-bathroom family residence, in a perfectly elevated position just footsteps from the banks of the Seven Creeks. Welcomed by a deep front porch, verandah and charming colonial-style windows, the home opens to a light-filled living area offering generous space to relax and unwind. The well-appointed kitchen features timber benchtops, a gas cooktop and overlooks the adjoining dining area, creating a warm and functional heart of the home. The main bedroom is privately positioned and includes a walk-in robe and stylish ensuite, while two additional bedrooms with built-in robes are serviced by a central family bathroom incorporating laundry facilities. Stepping outside, the home truly shines. An undercover alfresco area provides the perfect setting for year-round entertaining, overlooking a peaceful and private rear garden with plenty of space for children to play or to simply enjoy the tranquil surrounds. Comfort is assured with timber laminate flooring, gas heating and evaporative cooling, while practicality is enhanced by a large shed, ample secure parking and a three-car garage. Enjoy an enviable lifestyle with Euroa Primary School and St John's Primary School within easy walking distance, along with Euroa's vibrant caf s, shops, village farmers' market and convenient access to Euroa railway station. Shepparton is just over 30 minutes away, with Melbourne comfortably under two hours.

Other features: Close to Schools, Close to Shops

TYPE: For Sale

INTERNET ID: 300P195994

SALE DETAILS

\$720,000

CONTACT DETAILS

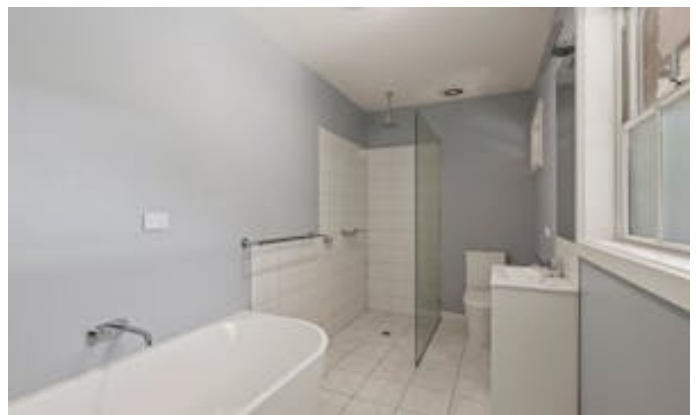
Euroa

27 Binney Street
EUROA, VIC
03 5795 2294

Brendan Allen
0499 229 007

- Land Area 1,012.00 square metre
- Bedrooms: 3
- Bathrooms: 2
- Car Parks: 1
- Double garage









3 Creek Drive, Euroa



THE ABOVE PLAN IS AN ARTIST'S IMPRESSION ONLY, IT INCLUDES ELEMENTS THAT ARE FOR DISPLAY PURPOSES ONLY AND MAY NOT BE TO SCALE. LANDSCAPING SHOWN IS INDICATIVE ONLY. DIMENSIONS ARE APPROXIMATE.