



38 Majors Creek Road, MAJORS CREEK, QLD 4816

Fresh Air, Open Space & a True Lifestyle Choice

Welcome to 38 Majors Creek Road â## Affordable acreage living. A peaceful rural retreat set on 2.82 hectares, offering families the space, freedom, and lifestyle you simply can't find in town.

Positioned on a corner block and surrounded by nature, this property is all about quiet living, fresh air, and an abundance of local wildlife. It's the perfect setting for kids to grow up with space to explore, ride, and enjoy the outdoors.

The high-set home features 3 bedrooms and a newly renovated bathroom, with wide verandahs providing the ideal spot to relax, entertain, and take in the tranquil surroundings. Under the home, a man cave creates the ultimate space to unwind or host guests.

Designed for practical rural living, the property includes dog-proof fencing and multiple paddocks â## ideal for horses, pets, or hobby farming. A secure 3-bay shed with roller doors provides excellent storage and workspace, complemented by an additional shipping container for even more storage options.

TYPE: For Sale

INTERNET ID: 300P196019

SALE DETAILS

Offers Over \$780,000

CONTACT DETAILS

Brenda Thompson
0447 072 899

Modern kitchen with a gas cooktop positioned in the centre of the home, perfect for everyday cooking and family living. High ceilings throughout enhance the sense of space

****Property Features:****

- * 2.82 hectares on a corner block
- * Peaceful rural setting with abundant wildlife
- * 3-bedroom high-set home
- * Modern kitchen with gas cooking
- * Newly renovated bathroom
- * Spacious verandahs for outdoor living
- * Man cave under the house
- * Secure 3-bay shed with roller doors
- * Additional shipping container for storage
- * Dog-proof fencing for peace of mind
- * Separate paddocks ideal for horses or family pets
- * 2x Bores and freshwater tanks
- * Solar power for energy efficiency

With bore water, freshwater tanks, and solar power, the property is well-equipped for a more self-sufficient lifestyle.

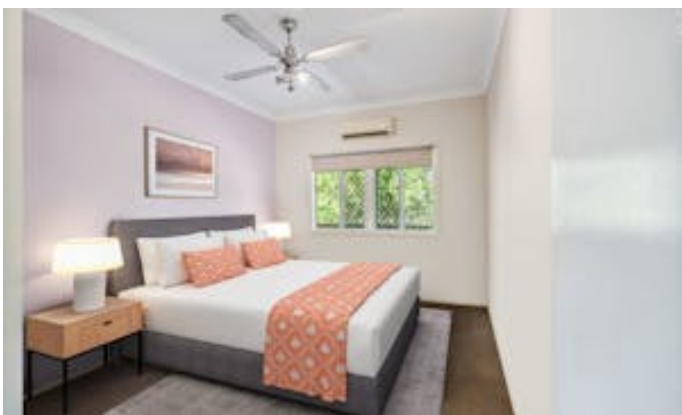
This is more than just a property it's a lifestyle choice. Space, privacy, and a slower pace of life, all ready for your family to enjoy.

Enquire today and experience the peace and potential for yourself.

Call Brenda Thompson Ph 0447 072 899

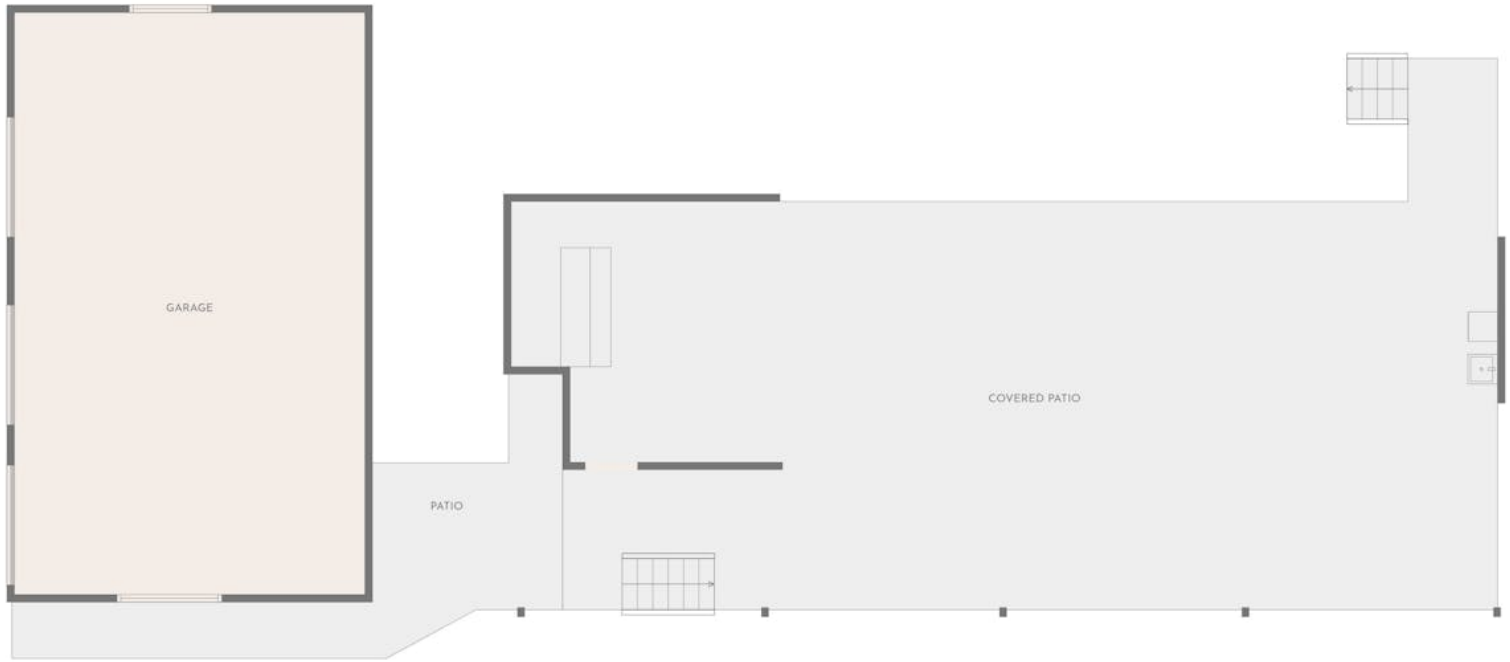
Other features: Area Views, Openable Windows, Roller Door Access

- Land Area 2.82 hectares
- Bedrooms: 3
- Bathrooms: 1
- 3 car garage

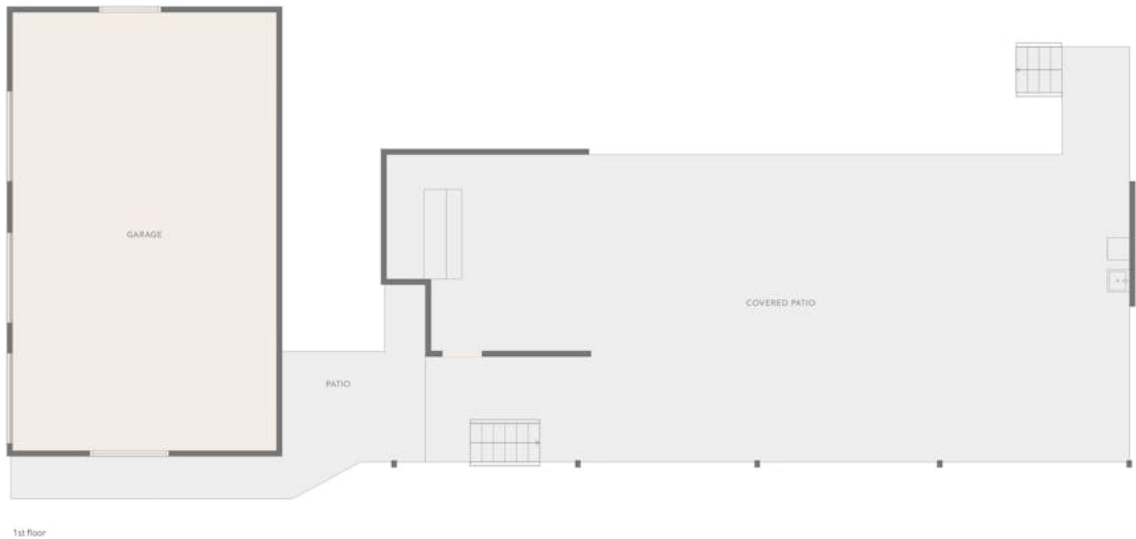








FLOOR PLAN CREATED BY CUBICASA APP. MEASUREMENTS DEEMED HIGHLY RELIABLE BUT NOT GUARANTEED.



FLOOR PLAN CREATED BY CUBICASA APP. MEASUREMENTS DEEMED HIGHLY RELIABLE BUT NOT GUARANTEED.