



## 36 Paxton Terrace, BURRA, SA 5417

### Charming 1910s Cottage with Modern Comforts in the Heart of Burra

Step into a piece of Burra's history with this beautifully maintained 1910s character cottage, where timeless charm meets thoughtful modern updates. Perfectly positioned on a desirable corner allotment, 36 Paxton Terrace offers an inviting lifestyle surrounded by manicured cottage gardens that create a peaceful and picturesque setting.

Inside, the home showcases three comfortable bedrooms plus a versatile sleepout-ideal as a guest room, home office, or creative space. The interior retains its rustic appeal while seamlessly incorporating modern conveniences, ensuring everyday living is both comfortable and stylish.

The fully renovated bathroom is a standout feature, designed with quality finishes and contemporary flair while still complementing the home's original character. Every detail throughout the property has been carefully considered, resulting in a home that is truly "neat as a pin" and ready for its next owner to simply move in and enjoy.

Natural light filters through the home, enhancing the warm and welcoming atmosphere, while the layout provides both functionality and flexibility for families, couples, or those seeking a charming country retreat. Outdoors, the lovingly maintained gardens offer

The particulars contained herein are supplied for information only and shall not be taken as a representation in any respect on the part of the vendor or its agent. Interested parties should contact the nominated person or office for full and current details.

**TYPE:** For Sale

**INTERNET ID:** 300P196056

#### **SALE DETAILS**

**\$470,000 - \$490,000**

#### **CONTACT DETAILS**

**Elders Real Estate Clare Valley / Burra**

230 Main North Road

Clare, SA

08 8842 9300

**Rob Calaby**

0428560301

space to relax, entertain, or indulge your green thumb, all framed by the cottage's classic facade.

Whether you're drawn to its heritage appeal, its modern updates, or its prime corner location, this delightful property presents a rare opportunity to secure a slice of Burra's history without compromising on comfort.

A home full of heart, character, and convenience - this is country living at its finest.

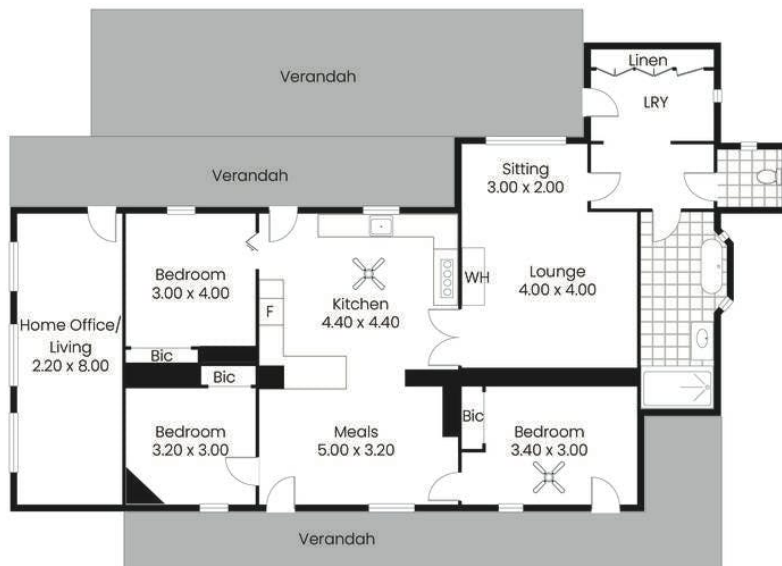
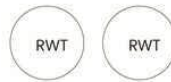
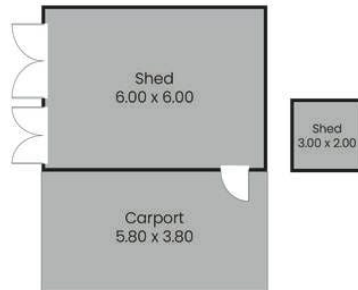
- Land Area 1,190.00 square metre
- Bedrooms: 3
- Bathrooms: 1
- Car Parks: 2
- Double garage











Living:	150.04sqm
Verandah/Carport:	103.85sqm
Shed:	42.00sqm
Total:	295.89sqm

This drawing is for illustration purposes only. All measurements are internal and approximate. Details intended to be relied upon should be independently verified.  
Produced by Open2view.com

