



28 Gray Street, MURRAY BRIDGE, SA 5253

Central Convenience Meets Space and Versatility

Positioned in a convenient central location of Murray Bridge, this character-filled late 1970s home delivers space, warmth and versatility on a generous 750m² allotment.

From the moment you step inside, the home's personality shines through with exposed brickwork and soaring raked ceilings creating a sense of volume and charm. A spacious sunken lounge offers a relaxed retreat, while the formal lounge complete with built-in bar & combustion heater sets the scene for entertaining, seamlessly connecting through sliding doors to the rear verandah overlooking the backyard.

The well-appointed kitchen sits at the heart of the home, flowing easily into the formal dining area, making everyday living and hosting effortless. Two bedrooms are well accommodated, with the main featuring its own ensuite, while the main bathroom is immaculate and beautifully preserved, presenting much as it would have when first built.

Outdoors, the property continues to impress with a spacious secure rear yard which includes a separate sleepout to, ideal as a teenage retreat, studio or creative space, with exciting potential to convert into a self-contained granny flat.

TYPE: For Sale

INTERNET ID: 300P196071

SALE DETAILS

\$590,000 - \$630,000

CONTACT DETAILS

Murray Bridge
201A Adelaide Road
Murray Bridge, SA
08 8531 9200
RLA: 62833

Jack Freestone
0435 207 475

Set close to the golf course and town centre, this is an opportunity that will appeal to both owner-occupiers and investors alike. A home with character, flexibility and future upside in a central Murray Bridge setting.

Invest or nest, the choice is yours.

For more information or for a FREE market appraisal of your property, please contact Jack Freestone on 0435 207 475.

CT - Volume 5134 Folio 502

Council - Rural City of Murray Bridge

Council Rates - \$2630 pa

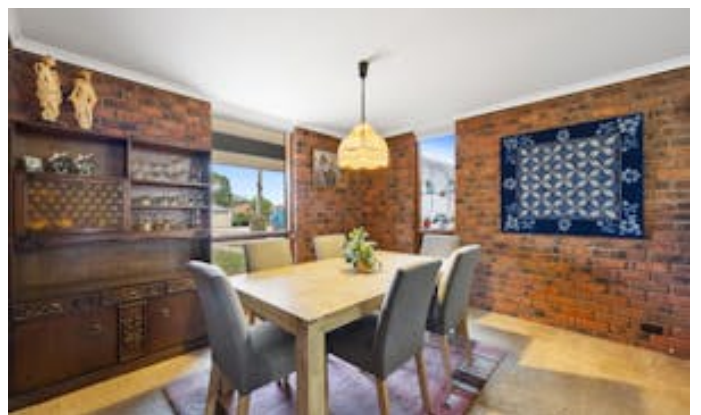
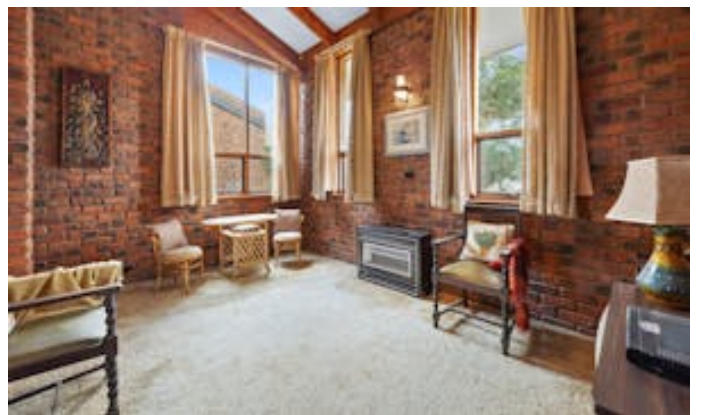
Zoning - Suburban Neighbourhood

Disclaimer: We have in preparing this information used our best endeavours to ensure that the information contained herein is true and accurate but accept no responsibility and disclaim all liability in respect of any errors, omissions, inaccuracies, or misstatements that may occur. Prospective purchasers should make their own enquiries to verify the information contained herein.

RLA 62833

Other features: Heating, Roller Door Access

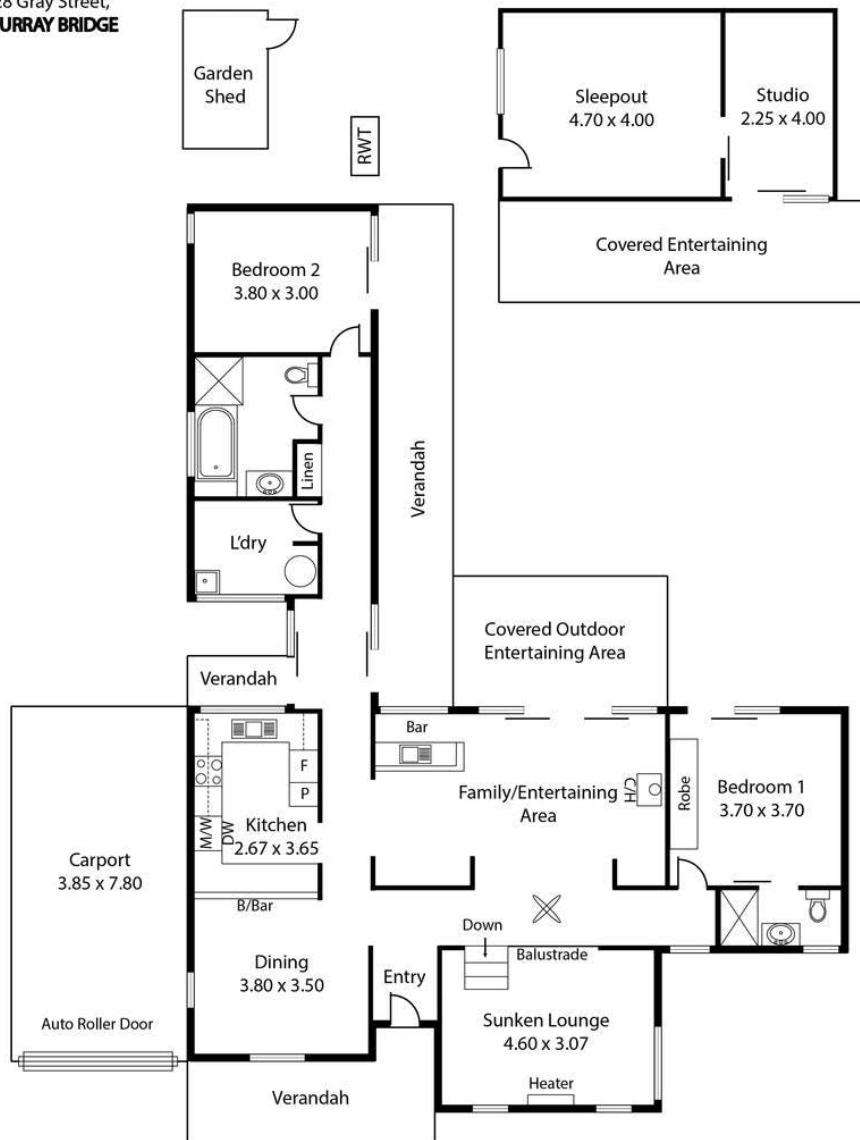
- Land Area 750.00 square metres
- Bedrooms: 2
- Bathrooms: 2
- Car Parks: 2







28 Gray Street,
MURRAY BRIDGE



| | |
|------------------|-------------------|
| Living: | 147.41 sqm |
| Verandah: | 32.28 sqm |
| Ent. Area: | 30.98 sqm |
| Sleepout/Studio: | 31.08 sqm |
| Carport: | 30.03 sqm |
| Total: | 271.88 sqm |

This Drawing is for illustration purposes only.
Not To Scale. All measurements are internal and approximate.
Details intended to be relied upon should be independently verified.

Produced by Open2view.com