



## 32 Amaroo Drive, EDGCUMBE BEACH, TAS 7321

### Ocean Side Living

Only 50 metres from the beach, just a strip of lush green grass (Crown Reserve) between the property and the sand.

Architectural plans available for the construction of a stunning new dwelling on the site.

Plenty of scope to make your own improvements.

Awesome sunrises over the Rocky Cape National Park and ocean.

Easy commuting distance (approx 20 minutes) between Smithton and Wynyard.

Other features: Beach Front, Water Views

- Land Area 760.00 square metres
- Building Area: 116.00 square metres
- Bedrooms: 3
- Bathrooms: 1
- Floorboards

**TYPE:** For Sale

**INTERNET ID:** 300P196418

**SALE DETAILS**

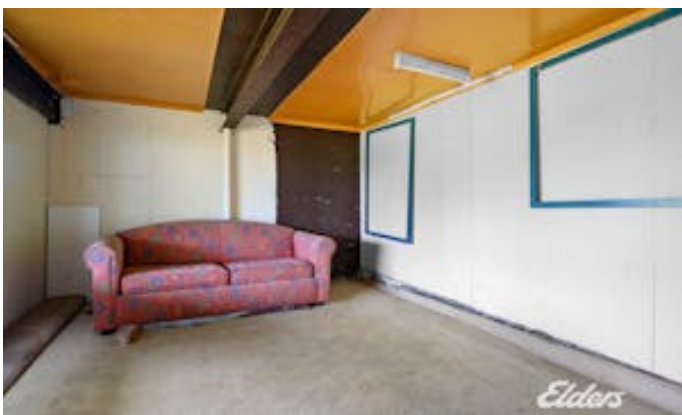
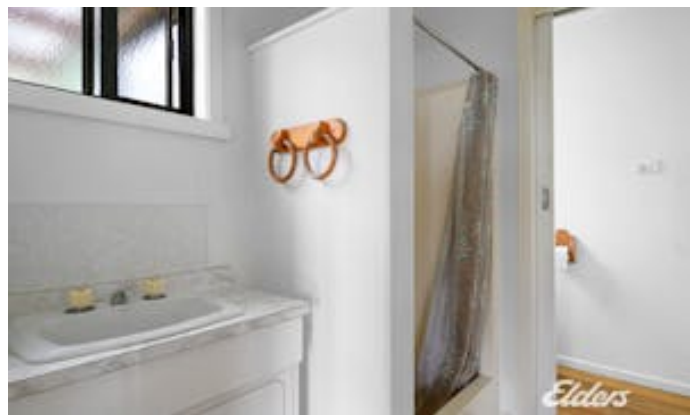
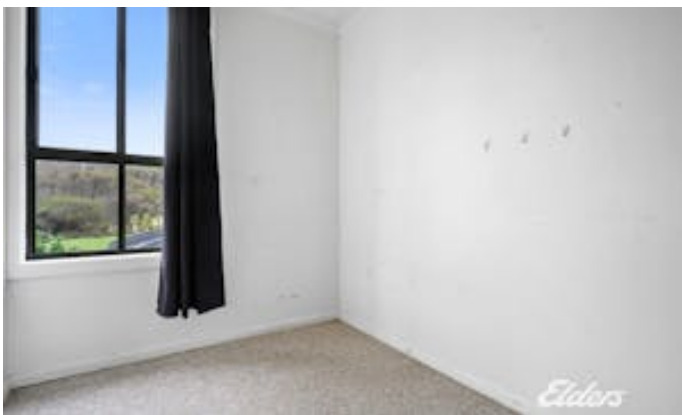
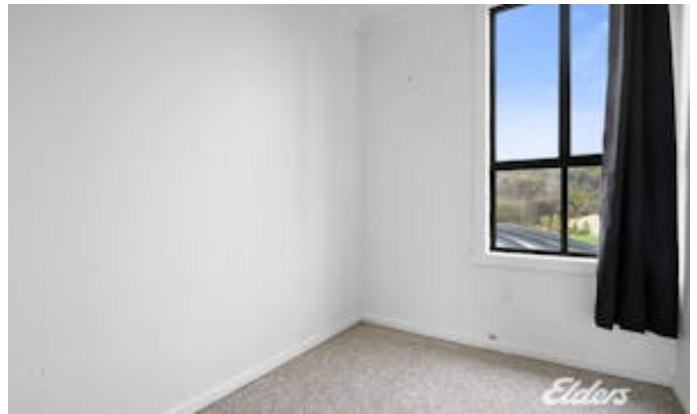
[Expressions of Interest](#)

**CONTACT DETAILS**

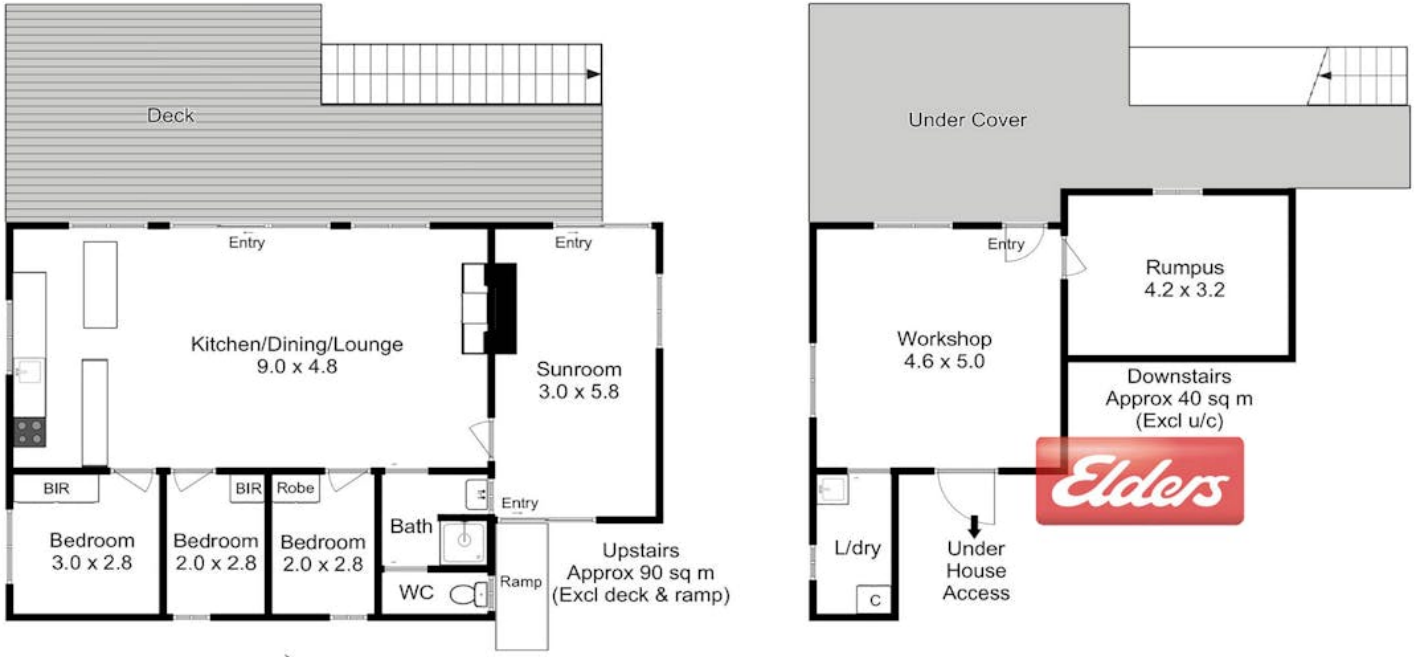
,

**Duncan Spinks**  
0429 352 004









Elders Circular Head  
Not to scale.  
This floorplan is a sketch, and all dimensions stated are approximate.  
Approx floor area 130 sq m  
© Real Image Tasmania