



20 Green Street, MYPOLONGA, SA 5254

c.1922 Cottage with Timeless Charm & Character

Positioned on a generous 1,012sqm corner allotment (approx.) with dual street frontage, this charming 1922 sandstone cottage is full of warmth, character and timeless appeal in the quaint township of Mypolonga.

Showcasing beautiful original features including ornate ceilings, the home offers a traditional layout beginning with the entrance hall flowing through to the cosy lounge room, complete with a slow combustion heater and split system air conditioning for year-round comfort. The lounge connects to the separate dining room, which then leads through to the neat kitchen with eat-in area and ample cupboard storage.

Accommodation includes one large main bedroom plus a smaller second bedroom or study space, ideal for those working from home or needing extra room. The home also includes a separate toilet, while the detached outdoor laundry incorporates bathroom facilities and a second toilet for added convenience.

Outside, front and rear verandahs provide peaceful spots to relax and enjoy the quiet surroundings. The powered garage adds exceptional versatility and could easily be utilised as a workshop, studio, shed or rumpus room, while the carport and additional off-street parking allow ample space for vehicles, a caravan or boat.

The particulars contained herein are supplied for information only and shall not be taken as a representation in any respect on the part of the vendor or its agent. Interested parties should contact the nominated person or office for full and current details.

TYPE: For Sale

INTERNET ID: 300P196508

SALE DETAILS

**Best Offer by 10/06/26
(USP)**

CONTACT DETAILS

Murray Bridge
201A Adelaide Road
Murray Bridge, SA
08 8531 9200
RLA: 62833

Jack Freestone
0435 207 475

Rich in charm and offering plenty of future potential, this delightful stone cottage presents an appealing opportunity for owner-occupiers, holidaymakers or Airbnb investors seeking an authentic Murray River lifestyle.

Conveniently located within walking distance to Hill Reserve, the local primary school and general store/post office, the property is also only a short drive to the Woodlane Reserve and boat ramp on the Murray River. Murray Bridge is within easy reach for shopping, schools and everyday amenities.

For more information or for a FREE market appraisal of your property, please contact Jack Freestone on 0435 207 475.

CT - Volume 5202 Folio 670

Council - Rural City of Murray Bridge

Council Rates - TBA

Zoning - Township - T

Disclaimer: We have in preparing this information used our best endeavours to ensure that the information contained herein is true and accurate but accept no responsibility and disclaim all liability in respect of any errors, omissions, inaccuracies, or misstatements that may occur. Prospective purchasers should make their own enquiries to verify the information contained herein.

Elders Real Estate RLA 62833

Other features: Close to Schools

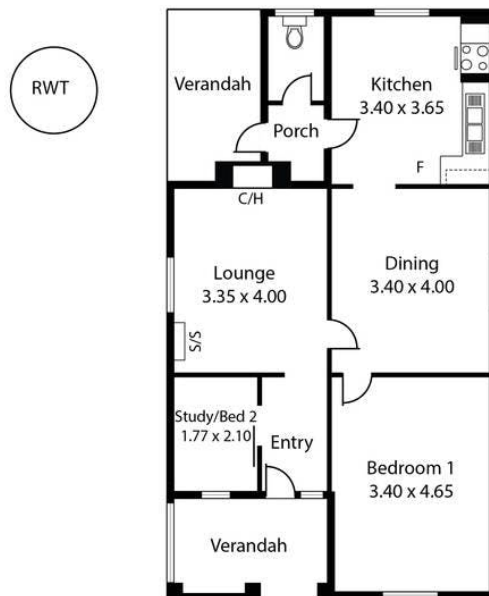
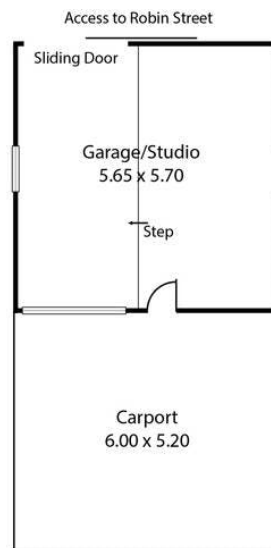
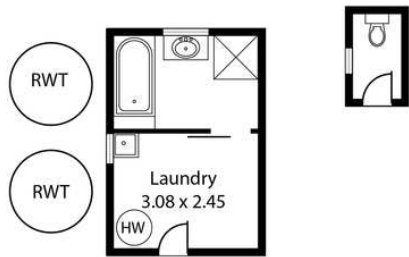
- Land Area 1,012.00 square metre
- Bedrooms: 2
- Bathrooms: 1
- Car Parks: 3







20 Green Street,
MYPOLONGA



Living:	76.53 sqm
Verandah:	15.30 sqm
L'dry/Bath:	17.50 sqm
Garage/Studio:	32.20 sqm
Carpport:	31.20 sqm
Total:	172.73 sqm

This Drawing is for illustration purposes only.
Not To Scale. All measurements are internal and approximate.
Details intended to be relied upon should be independently verified.
Produced by Open2view.com