



## 468 McPhails Road, BUNDALONG, VIC 3730

A Lifestyle Property That Truly Has It All

**4.05 hectares, 10.00 acres**

Set in the peaceful surrounds of Bundalong and just minutes from Yarrowonga, 468 McPhails Road delivers the ultimate combination of lifestyle, quality and functionality across approximately 10 picturesque acres.

Custom-built in 2016 and presented to an impeccable standard, this outstanding property offers a rare opportunity for families, tradies, caravan and boating enthusiasts alike.

Thoughtfully designed with comfort and practicality in mind, the home comprises four generous bedrooms, two stylish bathrooms and expansive open-plan living spaces, all complemented by polished concrete flooring and quality finishes throughout. Every detail has been carefully considered, creating a home that is both highly functional and beautifully appointed.

Step outside and the lifestyle appeal only continues. The sparkling in-ground pool creates the perfect setting for entertaining and relaxing, while the beautifully maintained

**TYPE:** Sold

**INTERNET ID:** 300P196576

**SALE DETAILS**

**\$1,250,000**

**CONTACT DETAILS**

**Elders Real Estate  
Yarrowonga**  
48 Belmore Street  
Yarrowonga, VIC  
03 5743 9500

**Xavier Leslie**  
0409 324 037

grounds are supported by an 8-zone irrigation system, freshwater bore servicing all external watering, and approximately 50,000 litres of water storage.

For those needing serious shedding and storage, this property is in a class of its own. A substantial 10m x 7m shed with a 3-metre-high roller door offers the ideal space for caravans, boats or additional vehicles, while the enormous 24m x 7m shed with two 3.6-metre-high openings provides incredible versatility for oversized caravans, machinery, workshop space or business needs.

Additional highlights include:

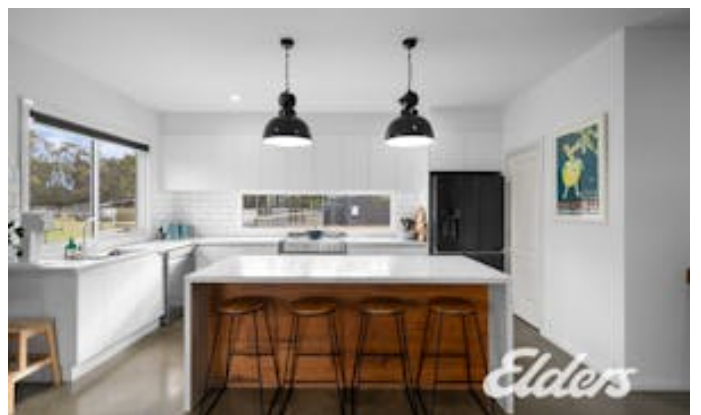
- 10kW solar system
- Immaculate presentation throughout
- Quiet and private rural setting
- Excellent access to Bundalong's waterways and Yarrowonga's amenities
- Secure dog enclosure
- Exceptional space for families, hobbies and recreational living

A truly complete lifestyle package where all the hard work has been done - simply move in, spread out and enjoy everything this remarkable property has to offer.

- Land Area 4.046856 hectares
- Bedrooms: 4
- Bathrooms: 3

## HOMESTEAD

Bedrooms	4
Bathrooms	3







# 468 Mcphails Road, Bundalong



Xavier Leslie  
0409 324 037



Leigh Ramsdale  
0408 385 150



THE ABOVE PLAN IS AN ARTIST'S IMPRESSION ONLY, IT INCLUDES ELEMENTS THAT ARE FOR DISPLAY PURPOSES ONLY AND MAY NOT BE TO SCALE. LANDSCAPING SHOWN IS INDICATIVE ONLY. DIMENSIONS ARE APPROXIMATE.