



Lot 1 Fore Street , BURRA, SA 5417

Charming Circa 1890 Bluestone Cottage on Corner Allotment

Step into timeless character and comfort with this beautifully updated bluestone cottage, ideally positioned in the historic township of Burra. Set on a corner allotment across two titles (approx. 419sqm), this versatile property offers an appealing opportunity as an investment, weekend escape, boutique B&B, or an easy-care downsizer.

Thoughtfully renovated while retaining its heritage charm, the home features a new roof, solar panels, updated wiring, and split system air-conditioning in both bedrooms plus the living room for year-round comfort.

Inside, you'll find a flexible floorplan with 2 bedrooms, including a main bedroom with adjoining study, dressing room or private retreat. The formal sitting room, complete with combustion heater, creates a warm and inviting atmosphere, while the separate dining room showcases a stunning pressed tin ceiling and skylight. The galley kitchen adds character with its unique crazy slate flooring and practical layout.

A cosy living room, enclosed sunroom, and upgraded bathroom with both shower and separate bath further enhance the home's appeal.

TYPE: For Sale

INTERNET ID: 300P196582

SALE DETAILS

\$460,000

CONTACT DETAILS

Elders Real Estate Clare Valley / Burra

230 Main North Road
Clare, SA

08 8842 9300

Julie Gabe

0438 836 508

Outside, enjoy a colourful, established cottage garden, along with a wood shed, tool shed, and single carport with lean-to.

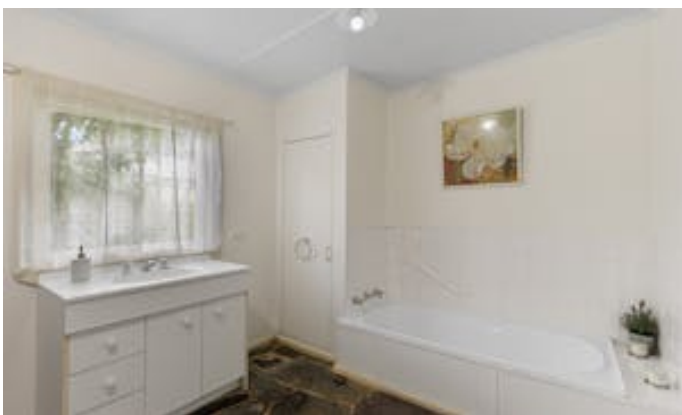
Features include:

- Circa 1890 bluestone cottage
- Corner allotment on two titles (approx. 419sqm)
- 2 bedrooms with flexible living options
- Renovated with new roof, solar panels & updated wiring
- Split system air-conditioning in bedrooms
- Formal sitting room with combustion heater
- Galley kitchen with slate flooring & electric oven
- Dining room with pressed tin ceiling & skylight
- Enclosed sunroom & cosy living area
- Upgraded bathroom with separate bath & shower
- Established cottage-style gardens
- Wood shed, tool shed & single carport with lean-to

A rare opportunity to secure a piece of history with modern comforts in a highly sought-after heritage township.

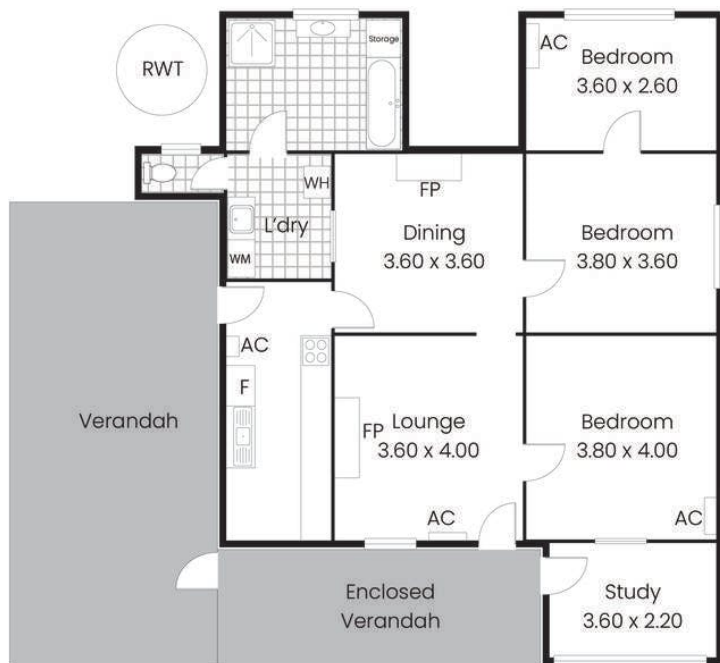
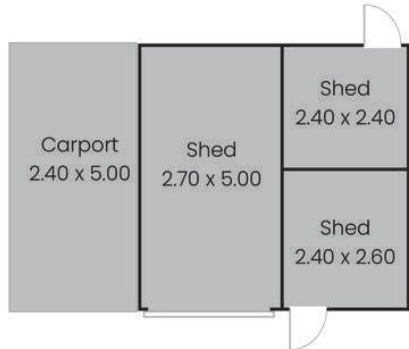
- Land Area 419.00 square metres
- Bedrooms: 2
- Bathrooms: 1











Living:	99.90sqm
Verandah:	50.88sqm
Carport:	12.00sqm
Shed:	25.50sqm
Total:	188.28sqm

This drawing is for illustration purposes only. All measurements are internal and approximate. Details intended to be relied upon should be independently verified.
Produced by Open2view.com

