



23 Ocean Boulevard, PORT GIBBON, SA 5602

Coastal Living with Ocean Views

Tightly Held Destination with Excellent Growth

Positioned in the heart of the tightly held and increasingly sought-after seaside community of Port Gibbon, this coastal property presents an outstanding opportunity to secure a beachside home or investment with ocean views and strong future upside.

Set on a 373sqm allotment with an impressive 19.35-metre frontage, the property is ideally located just metres from the coastline, approximately 20km south of Cowell and centrally positioned halfway between Whyalla and Port Lincoln - making it an accessible coastal escape with growing regional appeal.

The Residence

The dwelling comprises an original besser brick front section complemented by a timber-frame extension, offering a functional layout with scope to modernise and enhance over time.

Internally, the home features:

The particulars contained herein are supplied for information only and shall not be taken as a representation in any respect on the part of the vendor or its agent. Interested parties should contact the nominated person or office for full and current details.

TYPE: For Sale

INTERNET ID: 300P196615

SALE DETAILS

Expression of Interest
(USP)

CONTACT DETAILS

CLEVE / COWELL
31 Rudall Road & 14 Main
Street
CLEVE / COWELL, SA
08 8621 7100
RLA: 62833

Nick Schumann
0428 383 833

- 3-bedrooms and 1-bathroom
- Shared lounge and dining area, capturing coastal outlooks
- Adjoining kitchen positioned for everyday practicality
- Family room centrally located, ideal as a living retreat, kids' space or home office

Outdoor & Improvements

- Adjoining shed at the rear, providing excellent storage or workshop functionality
- Outdoor entertaining area on the side of the home, ideal for relaxed gatherings after a day at the beach or kids play space
- Low-maintenance allotment well-suited to holiday use or permanent living

Location Highlights

Port Gibbon is a small beachfront community experiencing increasing popularity and capital growth, prized for its pristine coastline, relaxed lifestyle and limited housing supply. Properties in this location are tightly held, making opportunities such as this increasingly rare.

Whether you're seeking a coastal holiday retreat, a renovation project with upside, or a foothold in a growing seaside market, this property represents genuine value and long-term potential.

Sale Method ### Expression of Interest (Unless Sold Prior)

Offers Close ### Thursday 11th June 2026 (2pm)

Contact Nick for further details or to arrange an inspection.

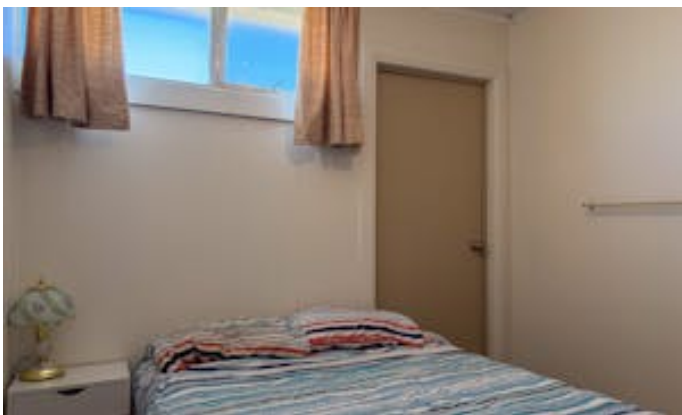
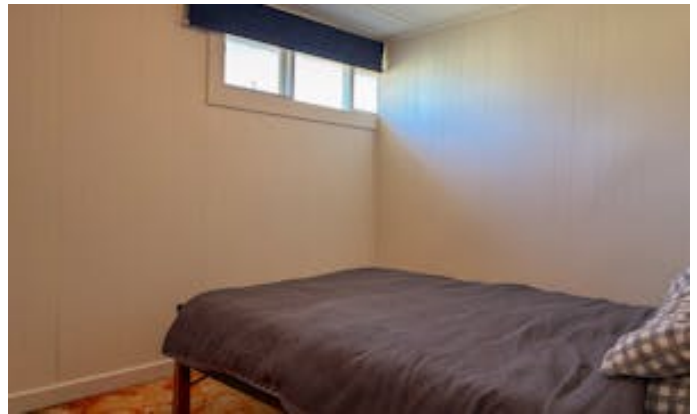
Disclaimer: all information provided has been obtained from sources we believe to be accurate, however, we cannot guarantee the information is accurate and we accept no liability for any errors or omissions (including but not limited to a property's land size, floor plans and size, building age and condition). Interested parties should make their own enquiries and obtain their own legal advice.

RLA 62833

Other features: Area Views, Beach Front, Ocean Views, Openable Windows, Water Front, Window Treatments

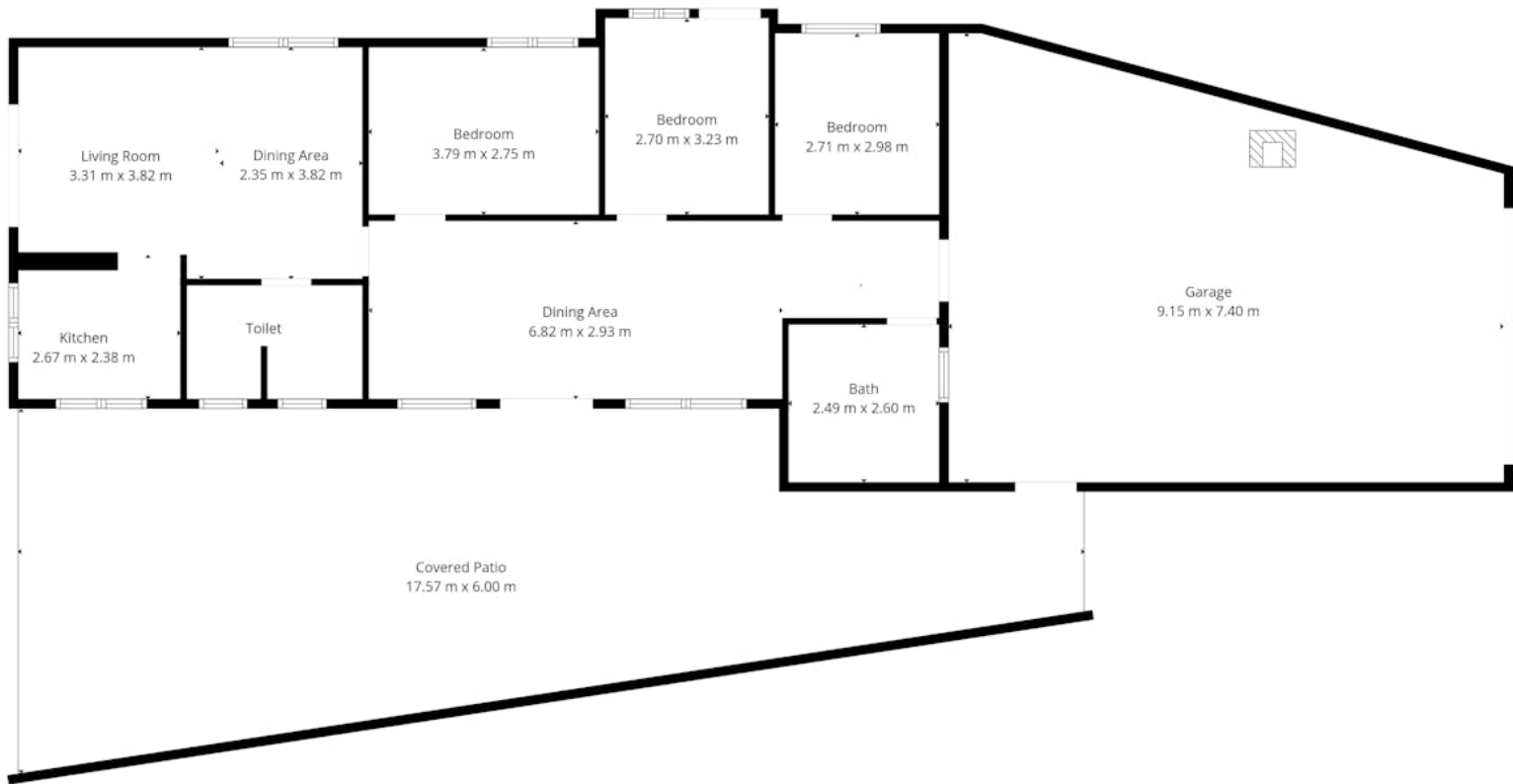
- Land Area 373.00 square metres
- Bedrooms: 3
- Bathrooms: 1
- Single garage











TOTAL: 93 m2
1st floor: 93 m2
EXCLUDED AREAS: COVERED PATIO: 75 m2, GARAGE: 58 m2, WALLS: 14 m2

Accurate (approximate) Measurements Are Recorded With Digital Devices.

