

13 Cardinal Court, PARK GROVE, TAS 7320

Luxury Living with Panoramic Ocean Views

Welcome to something truly exceptional – an elevated luxury residence that doesn't just offer a home, but delivers a bold statement of prestige and lifestyle. Perfectly positioned in one of Park Grove's most tightly held and sought-after pockets, this remarkable property captures panoramic outlooks stretching across the coastline, where sweeping ocean views meet glowing sunrise skies and an ever-changing backdrop of pure natural beauty.

Designed over one expansive level, this residence offers a seamless sense of space and connection throughout, creating effortless everyday living with an undeniable sense of presence. Inside, the home features three bedrooms with built-in wardrobes, each thoughtfully positioned for comfort and privacy, along with a highly versatile additional space – perfect as a fourth bedroom, executive home office, or a creative studio, depending on your lifestyle. The home is exceptionally well serviced with two stylish bathrooms plus an additional separate toilet, ensuring convenience and functionality for families, guests, and entertaining on any scale.

At the heart of the home, both the open-plan living and dining zones are bathed in natural light and designed to maximise both space and outlook. These living zones transition seamlessly to an impressive decked alfresco, complete with a covered pavilion crafted for year-round use. Whether it's relaxed mornings in the sun, long

The particulars contained herein are supplied for information only and shall not be taken as a representation in any respect on the part of the vendor or its agent. Interested parties should contact the nominated person or office for full and current details.

TYPE: For Sale

INTERNET ID: 300P196663

SALE DETAILS

Offers Over \$1,100,000

CONTACT DETAILS

Elders Real Estate Burnie

72-74 Wilson Street

Burnie, TAS

03 6432 2311

Bruce Jubb

0417987828

luxurious lunches, or evening gatherings framed by sparkling coastal views, this is an entertainer's dream and a private sanctuary in one. The property also features large under-house storage with excellent potential, offering ample space for storage, workshop use, or future scope to further enhance and utilise the area to suit your needs.

Positioned in an elevated and highly desirable setting that also shares a boundary with Marist Regional College, the location adds rare convenience and strong lifestyle appeal for families seeking proximity to quality education and community connection.

A home of this calibre is seldom offered combining elevation, outlook, scale, and effortless single-level living into one remarkable package. This is more than a residence; it is a statement in refined living, designed to impress, inspire, and be enjoyed for years to come.

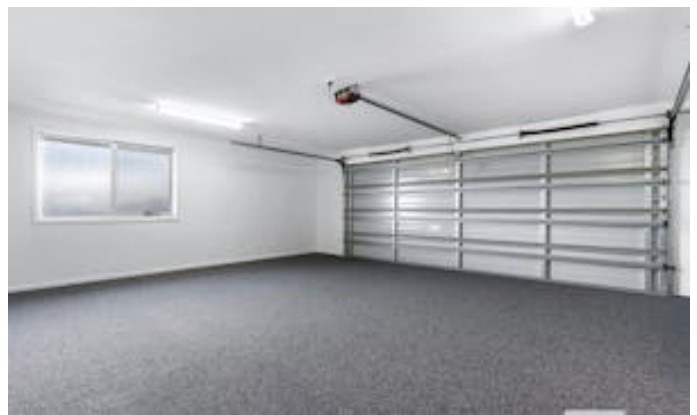
DISCLAIMER: While Elders Real Estate Burnie has taken every care to verify the accuracy of the details in this advertisement, we cannot guarantee its correctness. Prospective buyers or tenants need to take such action as is necessary, to satisfy themselves of any pertinent matters

Other features: Area Views, Car Parking - Surface, Close to Schools, Close to Shops, Close to Transport, Ocean Views

- Land Area 812.00 square metres
- Building Area: 277.00 square metres
- Bedrooms: 3
- Bathrooms: 2
- Car Parks: 2
- Double garage
- Ensuite



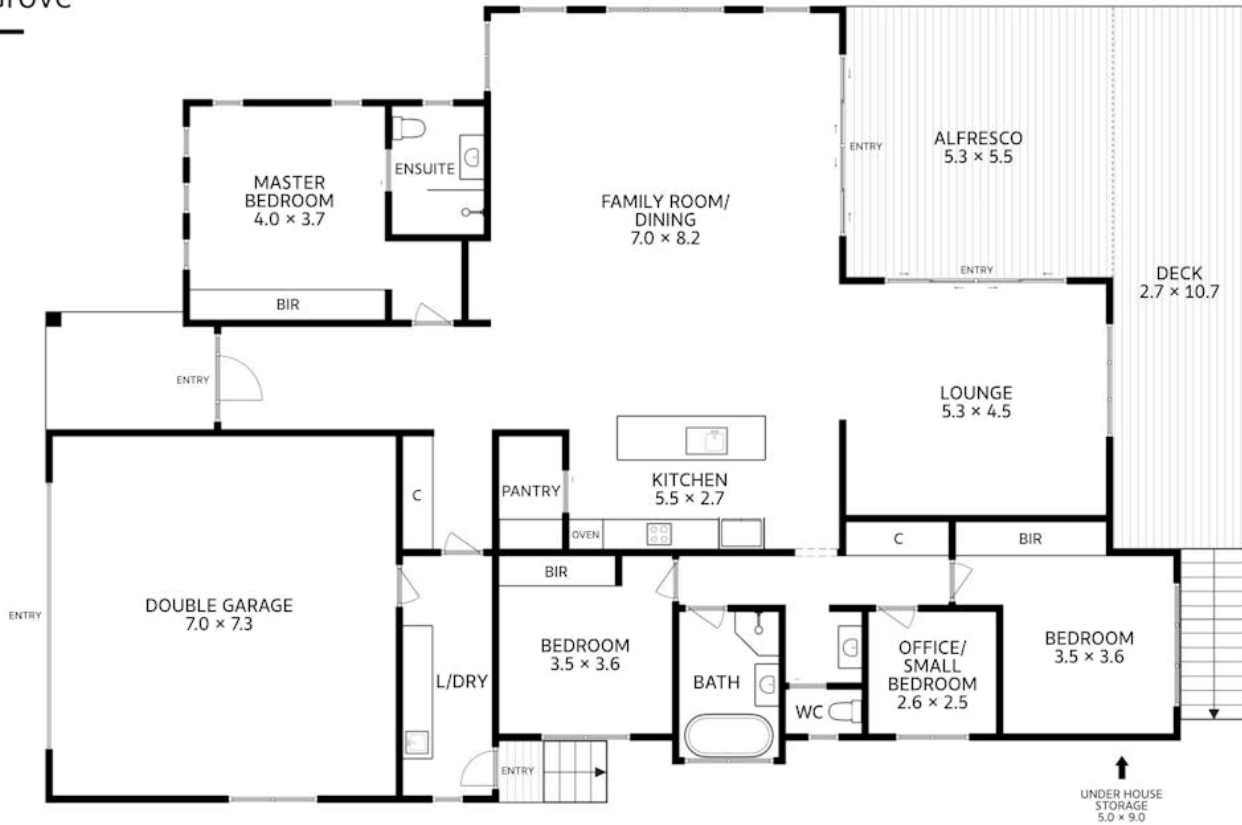








13 Cardinal Court
Park Grove



Approx. Floor Area 277 sq m
(excluding alfresco and deck)

All measurements are internal and approximate.
This plan is a sketch for illustration, not valuation.

