

## 13 Jersey Street, NARACOORTE, SA 5271

### Move-In Ready Home with Country Outlook

Positioned at the end of a quiet no-through road, this solid stone home offers peaceful living on a generous 733m<sup>2</sup> allotment with magnificent rural views. Combining comfort, practicality, and low-maintenance appeal, this property presents an excellent opportunity for families, first-home buyers, retirees, or investors alike.

Inside, the home features a welcoming open plan living and dining area, complemented by a well-equipped kitchen with electric appliances and dishwasher. The spacious lounge is designed for year-round comfort with a slow combustion heater, split system air conditioner, and ceiling fan servicing the main living area.

Accommodation includes three comfortable bedrooms, all fitted with ceiling fans, while two bedrooms also feature built-in robes for added storage.

The renovated bathroom adds a touch of modern luxury, complete with shower, bath, vanity, and heated flooring. A separate toilet and practical laundry with outside access further enhance the home's functionality.

Outside, there is plenty of space for vehicles, trailers, or hobbies with a double garage

The particulars contained herein are supplied for information only and shall not be taken as a representation in any respect on the part of the vendor or its agent. Interested parties should contact the nominated person or office for full and current details.

**TYPE:** For Sale

**INTERNET ID:** 300P196712

**SALE DETAILS**

**\$455,000**

**CONTACT DETAILS**

**Naracoorte**

Shop 5/26 Robertson Street

Naracoorte, SA

08 8762 7900

RLA: 62833

**Sally Logan**

0403 257 833

plus adjoining carport. The spacious yard is easy to maintain, and rainwater is connected to the home for added convenience.

Located close to primary schools and offering immediate move-in or rental potential, this is a fantastic opportunity to secure a solid, well-maintained home in a peaceful setting.

To arrange an inspection, contact Sally on 0403 257 833.

Council: Naracoorte Lucindale

Council Rates: \$1605.27 per annum

CT: 5264/670

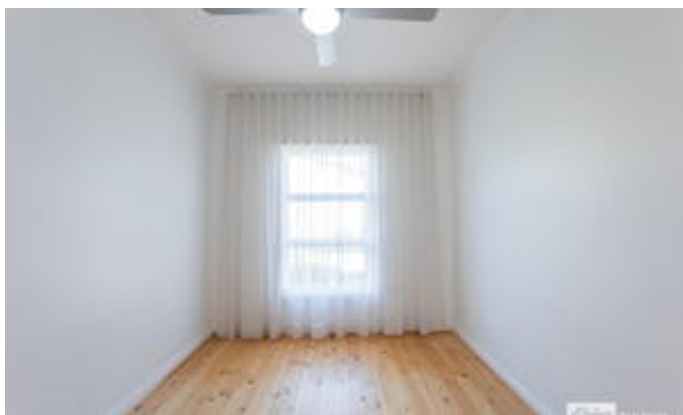
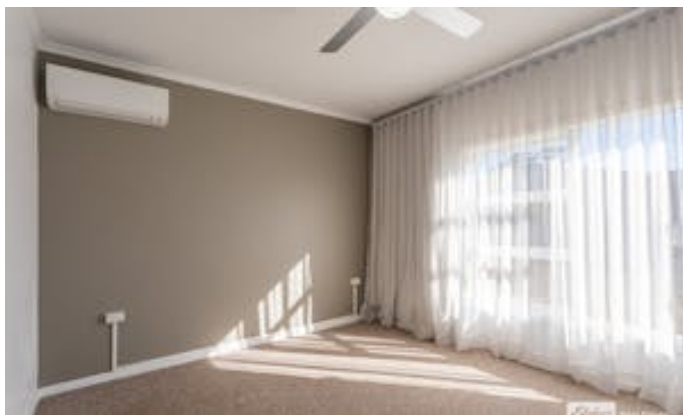
Land Size: 733m2 approx

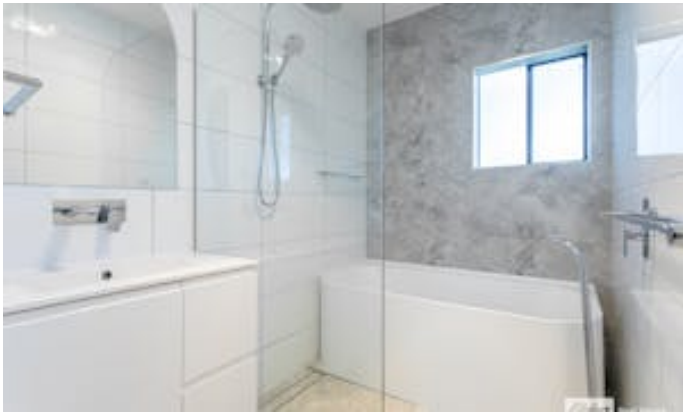
Zoning: Neighbourhood

Disclaimer: We have in preparing this information used our best endeavours to ensure that the information contained herein is true and accurate, but accept no responsibility and disclaim all liability in respect of any errors, omissions, inaccuracies or misstatements that may occur. Prospective purchasers should make their own enquiries to verify the information contained herein. RLA62833

Other features: Close to Schools

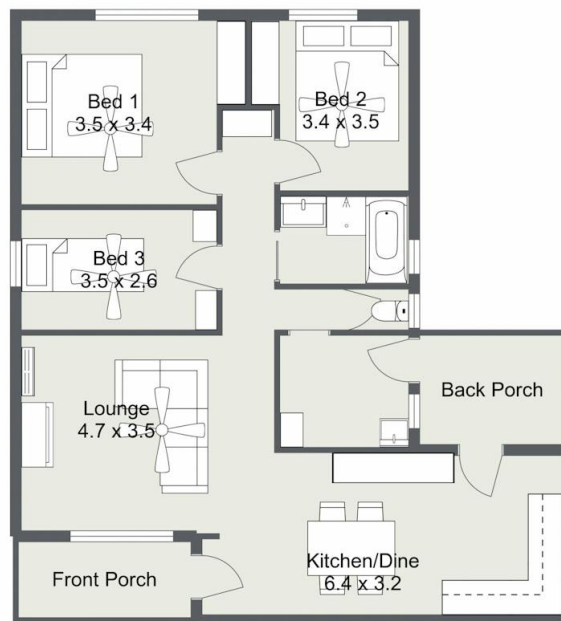
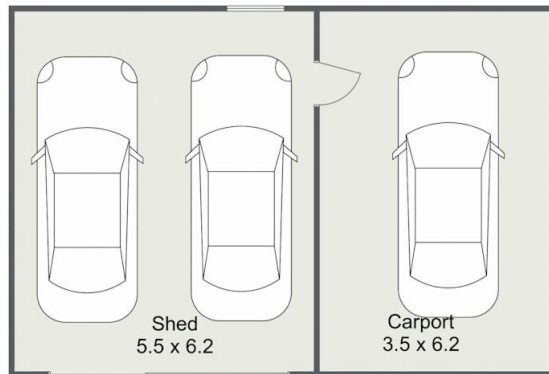
- Land Area 733.00 square metres
- Bedrooms: 3
- Bathrooms: 1
- Double garage
- Single carport











THIS FLOOR PLAN IS FOR ILLUSTRATION PURPOSES ONLY