



6 Futuna Avenue, PARK GROVE, TAS 7320

Family Space, Flexible Living & Endless Potential

Nestled within one of Park Grove's most sought-after pockets, 6 Futuna Avenue presents an exceptional opportunity to secure a spacious family home with the flexibility to adapt to a range of lifestyles. Offering a well-considered floorplan and multiple living areas, this property is perfectly suited to growing families, first-home buyers or investors seeking a quality addition to their portfolio.

Designed with practicality in mind, the home features four comfortable bedrooms alongside a versatile office or sunroom, creating the ideal space for those working from home, pursuing hobbies or simply needing an additional retreat. The generous lounge provides a welcoming place to unwind, while the adjoining dining area connects seamlessly to the kitchen, forming the heart of everyday family living. A reverse cycle air conditioner ensures year-round comfort, providing efficient heating and cooling throughout the seasons.

Centrally positioned, the bathroom is complemented by a separate toilet for added convenience, while the dedicated laundry further enhances the home's functional layout. Throughout, the floorplan offers excellent separation between living and accommodation zones, ensuring comfort and flexibility for households of all sizes.

TYPE: For Sale

INTERNET ID: 300P196737

SALE DETAILS

Offers Over \$585,000

CONTACT DETAILS

Elders Real Estate Burnie

72-74 Wilson Street

Burnie, TAS

03 6432 2311

Bruce Jubb

0417987828

Stepping outside, an undercover entertaining area provides the perfect setting for weekend barbecues, family gatherings or relaxed evenings with friends. A detached garage offers secure parking and valuable storage space, while the surrounding grounds provide plenty of room for children and pets to enjoy.

One of the home's standout features is its incredibly convenient position, with direct rear access adjoining Marist Regional College, making school drop-offs and pick-ups easier than ever. Combined with its close proximity to shopping facilities, sporting grounds, healthcare services and the Burnie CBD, this is a location that continues to be highly sought after by families.

Offering approximately 148m² of internal living space, 6 Futuna Avenue is a property where comfort, convenience and flexibility come together effortlessly, delivering a lifestyle opportunity that will appeal to a wide range of buyers.

DISCLAIMER: While Elders Real Estate Burnie has taken every care to verify the accuracy of the details in this advertisement, we cannot guarantee its correctness. Prospective buyers or tenants need to take such action as is necessary, to satisfy themselves of any pertinent matters.

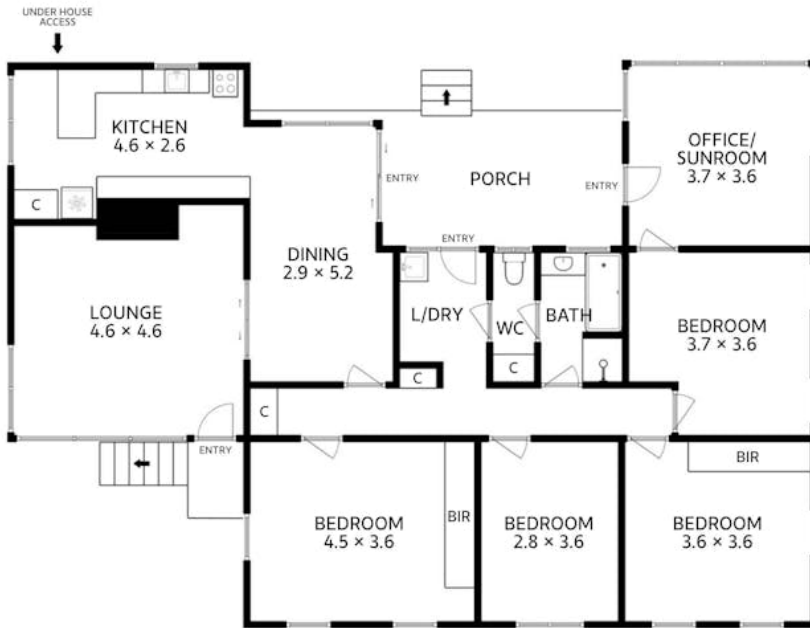
- Land Area 771.00 square metres
- Building Area: 151.00 square metres
- Bedrooms: 4
- Bathrooms: 1
- Car Parks: 3
- Single garage







6 Futuna Avenue
Park Grove



Approx. Floor Area 148 sq m
(excluding porch, garage and undercover entertaining)

All measurements are internal and approximate.
This plan is a sketch for illustration, not valuation.

