



100 Angove Road, SPENCER PARK, WA 6330

Impeccable Home with Super Relaxing Groove

This stunning home delivers everything you would expect in a modern, quality build, but where it stands out is its amazing ambience - whether you call it vibe, energy, groove, or feel, this home has it in spades! Open the front door and look straight through the open-plan living area with extra-high ceiling, and northerly aspect to greenery beyond creating a light and airy space that welcomes you home, and immediately soothes your soul. Elsewhere, a fabulous kitchen and spacious bedrooms are complemented by on-point bathrooms, while a deck out the back provides some elevation and a beautiful setting to relax, surrounded by greenery.

Perfectly suited to first home buyers, young families, professionals, and retirees, seeking clean, modern, and easy living in a brilliant location.

- Brick and tile four bed, two bath home built in 2006, in immaculate condition
- Planted natives in front garden creating private and peaceful entrance
- On-point kitchen with central island bench, dishwasher, quality appliances
- Stunning open-plan living with high ceiling, northerly aspect, full of beautiful light throughout the day

The particulars contained herein are supplied for information only and shall not be taken as a representation in any respect on the part of the vendor or its agent. Interested parties should contact the nominated person or office for full and current details.

TYPE: For Sale

INTERNET ID: 300P196764

SALE DETAILS

Offers above \$780,000

CONTACT DETAILS

Albany Real Estate
189 Chester Pass Road
ALBANY, WA
08 9842 7900

Blair Scott
0459 024 026

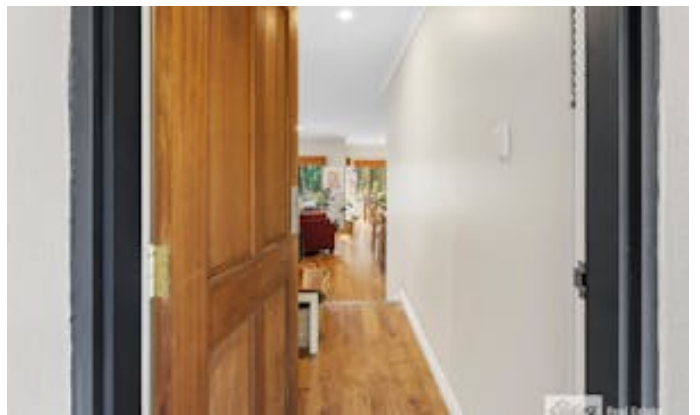
- King-size master suite with high ceiling, built-in robes, and ensuite, private deck access
- Two queen and one double family bedrooms, all with built-in robes
- Family bathroom with bath and shower, separate WC
- North-facing undercover and open outdoor entertaining, private, surrounded by lovely greenery
- Small area of lawn, a few citrus trees (lemon, mandarin, yuzu), garden shed,
- Excellent location close to shops, sporting precinct, hospital, and local primary school, easy drive to town and beach

This home has been meticulously cared for and is presented in immaculate condition. You will love coming home here, and letting the stress of the day wash away. You will love the gentle light in the living space and master bedroom, and chilling out with a morning coffee or evening wine on the beautiful deck. You will delight in everything the home has to offer, as well as its central location just up the road from shops, hospital, and school, and within easy reach of town and the beach.

For your private inspection or more information please contact Blair Scott on 0459 024 026.

Other features: Close to Schools, Close to Shops

- Land Area 450.00 square metres
- Bedrooms: 4
- Bathrooms: 2
- Double garage
- Ensuite









Elders Real Estate

FLOOR PLAN

This floor plan including furniture, fixture measurements and dimensions are approximate and for illustrative purposes only. BoxBrownie.com gives no guarantee, warranty or representation as to the accuracy and layout. All enquiries must be directed to the agent, vendor or party representing this floor plan.

100 Angove Rd, Spencer Park