



14 Cade Street, YARRAWONGA, VIC 3730

The Lake, The Lifestyle, The Location!

Just moments from the shores of Lake Mulwala, this well-maintained brick veneer home offers an enviable lifestyle where morning walks, waterfront sunsets and endless recreation become part of your everyday routine.

Nestled in a tightly held pocket of Yarrawonga, 14 Cade Street enjoys exceptional proximity to the lake's walking and cycling tracks, boat ramps, parklands and foreshore reserves, while remaining only minutes from the vibrant town centre, cafes, restaurants, schools and essential services.

The home itself comprises three bedrooms, a central bathroom and comfortable living spaces, while outside you'll discover a private undercover entertaining area with the added convenience of a double garage and rear shedding-perfect for storage of all the equipment that comes with enjoying the Lake Mulwala lifestyle.

Whether you're seeking a permanent residence, holiday retreat or investment in a premium location, this is a property that places the very best of Yarrawonga at your doorstep. Spend your days on the water, enjoy kilometres of scenic walking tracks, and embrace the relaxed lifestyle that has made Lake Mulwala one of regional Victoria's most coveted destinations.

The particulars contained herein are supplied for information only and shall not be taken as a representation in any respect on the part of the vendor or its agent. Interested parties should contact the nominated person or office for full and current details.

TYPE: For Sale

INTERNET ID: 300P196773

SALE DETAILS

\$679,000

CONTACT DETAILS

**Elders Real Estate
Yarrawonga**
48 Belmore Street
Yarrawonga, VIC
03 5743 9500

Leigh Ramsdale
0408 385 150

A rare opportunity to secure a home where lifestyle, location and future potential come together in perfect harmony.

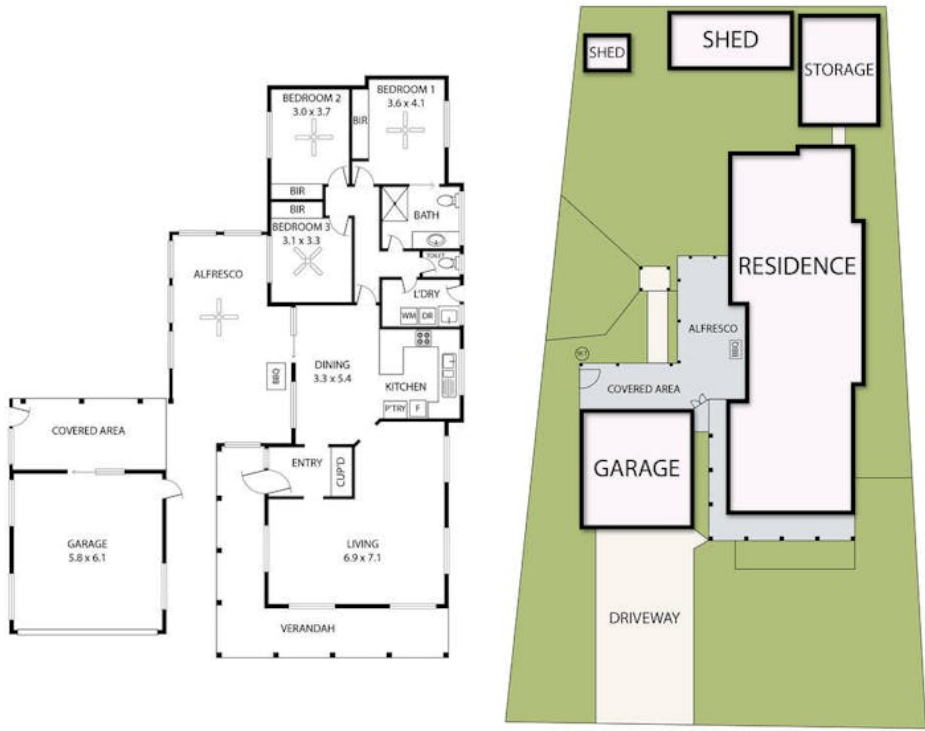
Other features: Close to Schools, Close to Shops, Close to Transport, Exhaust, Heating, Openable Windows

- Land Area 770.00 square metres
- Bedrooms: 3
- Bathrooms: 1
- Car Parks: 2
- Double garage





14 Cade Street, Yarrawonga



Xavier Leslie
0409 324 037



Leigh Ramsdale
0408 385 150

THE ABOVE PLAN IS AN ARTIST'S IMPRESSION ONLY, IT INCLUDES ELEMENTS THAT ARE FOR DISPLAY PURPOSES ONLY AND MAY NOT BE TO SCALE. LANDSCAPING SHOWN IS INDICATIVE ONLY. DIMENSIONS ARE APPROXIMATE.